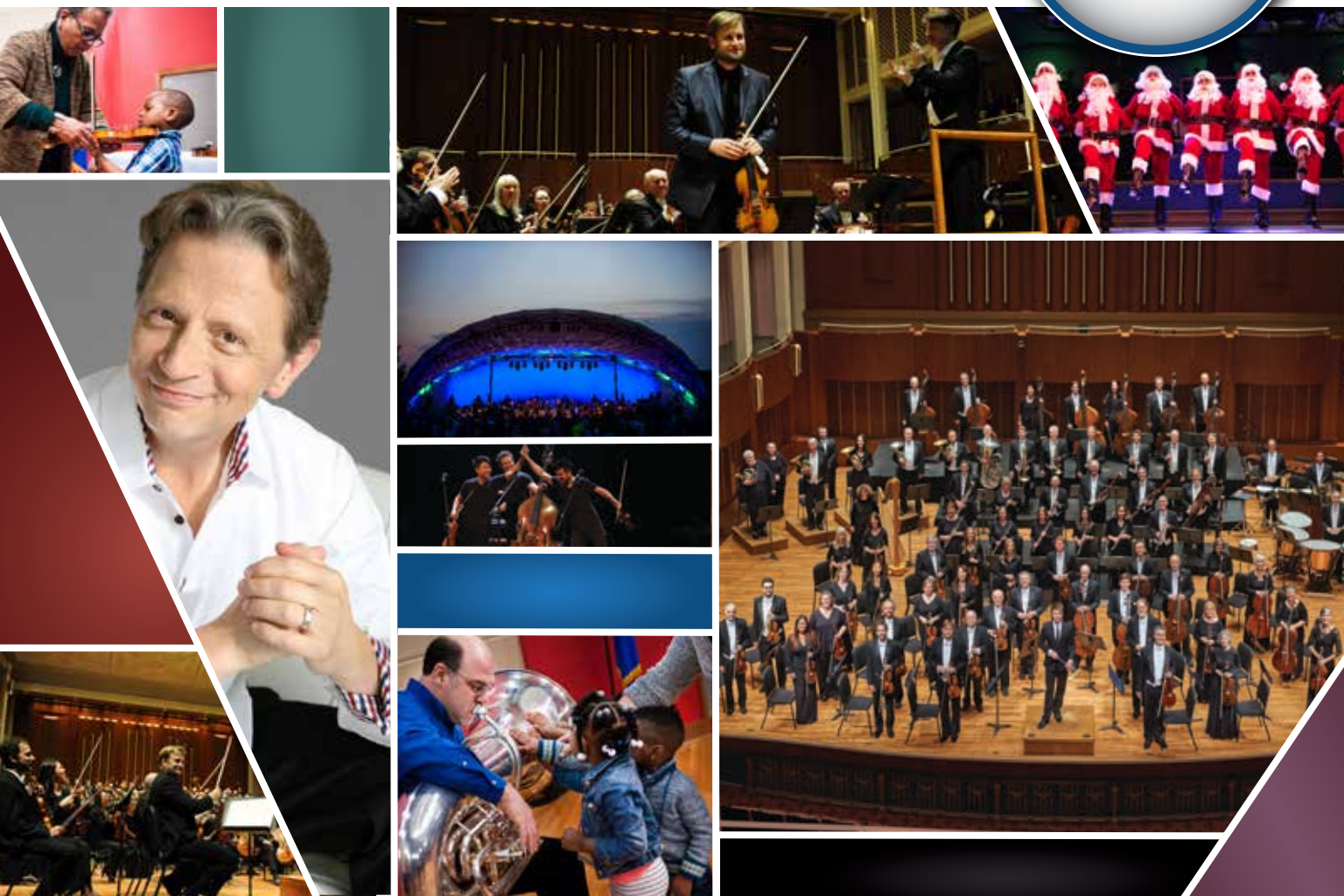




2016 - 2017 ANNUAL REPORT OF THE INDIANA SYMPHONY SOCIETY, INC.



LETTER FROM THE BOARD CHAIR

Dear friends,

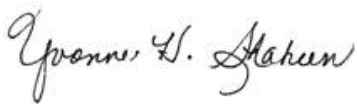
The 2016-17 season was a monumental year for the Indianapolis Symphony Orchestra. As my colleague Vince Caponi passed the gavel to me one year ago to serve as Chair of the Board of Directors, our organization was still celebrating the successful completion of the Collective Bargaining Agreement with our musician's union – more than a year ahead of the current contract's completion!

In my first year of this term, I have experienced the joy of welcoming new colleagues to the ISO, the excitement of new partnerships, and the hopeful anticipation of naming a new Chief Executive Officer in the coming weeks. I am so confident in the future of the ISO. Our musicians, staff, volunteers, donors, and patrons are dedicated to keeping the music alive in the Hilbert Circle Theatre, and the impact of our organization is growing in our community.

The artistic integrity of our programming and performances continues to amaze and entertain patrons under the leadership of Music Director Krzysztof Urbanski and Principal Pops Conductor Jack Everly. From classical concerts bringing in some of the world's most talented guest artists to our Film + Orchestra performances bringing thousands of new faces into the hall and many more offerings, there truly is something for everyone at the ISO.

I'd like to thank you – our donors, supporters, and friends – for your continued trust in this organization. There is always more work to be done, but I am genuinely excited to see what the next year has in store for the ISO.

Sincerely,



Yvonne H. Shaheen
Chair, Board of Directors

ISO BOARD OF DIRECTORS

Founded by Ferdinand Schaefer in 1930
Maintained and Operated by the
Indiana Symphony Society, Inc.

OFFICERS

Yvonne H. Shaheen, *Chair*
Michael Becher, *Vice-Chair*
Steve Hamilton, *Interim CEO*
Charlene Barnette, *Secretary*
Michael Becher, *Treasurer*

BOARD OF DIRECTORS

Wendy Adams	Ann Hampton Hunt	Jackie Nytes*
Hon. Alex M. Azar II	Phil Kenney*	Michael P. O'Neil*
Deborah Ware Balogh	Joseph M. Kessler	Brandon Russell
Charlene Barnette*	David Kleiman	Alice K. Schloss
Michael Becher*	Liz Kyzr	Yvonne H. Shaheen*
Barry J. Bentley*	Martha D. Lamkin**	Christopher Slapak
Christina Bodurow, Ph.D.	Sarah L. Lechleiter	J. Albert Smith Jr.
John A. Bratt	Greg Loewen	Mary Solada
Bryan Brenner	Karen Mangia	Marianne Williams Tobias
Vincent Caponi*	Scott Martin	Pete Ward
Kiamasha Colom	Morrie Maurer	David Wilcox
Trent Cowles	Bruce McCaw	Ralph V. Wilhelm*
Andrea Davis*	Karen H. Mersereau	C. Daniel Yates
Craig Fenneman	David Morgan	James C. Zink Sr.
Gary Ginstling**	Peter A. Morse Jr.	Jennifer Zinn
Steve Hamilton*	Gerald L. Moss	
Peter W. Howard, Ph.D.	Marc Nichols	

*Executive Committee

**Term ended during 2016-2017

BOARD OF TRUSTEES

John M. Mutz, *Chair*
Robert A. Anker
Stephen E. DeVoe
Carolyn S. Hardman
Kay Koch
Gordon E. Mallett, Ph.D.
Robert B. McNamara
Charles O'Drobinak
Henry C. Ryder
Fred E. Schlegel
Martha Anne Varnes
Dr. Charles H. Webb Jr.
Richard D. Wood

MUSICIANS OF THE INDIANAPOLIS SYMPHONY ORCHESTRA

KRZYSZTOF URBAŃSKI, MUSIC DIRECTOR
JACK EVERLY, PRINCIPAL POPS CONDUCTOR
RAYMOND LEPPARD, CONDUCTOR LAUREATE

First Violin

Zachary De Pue, *Concertmaster*
The Ford-West Chair
Alexander Kerr, *Principal Guest Concertmaster*
Philip Palermo, *Associate Concertmaster*
Peter Vickery, *Assistant Concertmaster*
The Meditch Chair
Dean Franke, *Assistant Concertmaster*
The Wilcox Chair
Barbara Fisher Agresti
Jennifer Greenlee
Sherry Hong
Michelle Kang
Vladimir Krakovich
Charles Morey

Second Violin

Konstantin Umansky, *Principal*
David Bartolowitz, *Associate Principal*
Mary Anne Dell'Aquila, *Assistant Principal*
The Taurel Chair
*The Dick Dennis Fifth Chair**
Louise Alexander
Patrick Dalton-Holmes
Victoria Griswold
Hua Jin
Jayna Park
Barbara Radomski
Lisa Scott
Oleg Zukin

Viola

The Schlegel Chair
Mike Chen, *Acting Principal/Associate Principal*
Beverly Scott, *Assistant Principal*
Amy Kniffen
Terry E. Langdon
Eva Lieberman
Stephanie Tong
Zachary Collins

Cello

Austin Huntington, *Principal*
Perry Scott, *Associate Principal*
Chair Anonymously Endowed
Sarah Boyer
Ingrid Fischer-Bellman
The Randall L. Tobias Chair
Mark Maryanovsky
Anne Duthie McCafferty
The Dr. and Mrs. Robert L. Rudesill Chair
Jian-Wen Tong

Contrabass

Ju-Fang Liu, *Principal*
Robert Goodlett II, *Assistant Principal*
Nami Akamatsu
L. Bennett Crantford
Gregory Dugan
Peter Hansen
Brian Smith

Flute

Karen Evans Moratz, *Principal*
The Sidney and Kathy Taurel Chair
Robin Peller
Rebecca Price Arrensen, *Assistant Principal*

Piccolo

Rebecca Price Arrensen
The Janet F. and Dr. Richard E. Barb Chair

Oboe

Jennifer Christen, *Principal*
The Frank C. Springer Jr. Chair
Sharon Possick-Lange
Roger Roe, *Assistant Principal*

English Horn

Roger Roe
The Ann Hampton Hunt Chair

Clarinet

David A. Bellman, *Principal*
The Robert H. Mohlman Chair
Cathryn Gross
The Huffington Chair
Samuel Rothstein, *Assistant Principal*

Bass Clarinet

Samuel Rothstein

Bassoon

John Wetherill, *Principal*
Michael Muszynski
Mark Ortwein, *Assistant Principal*

Contrabassoon

Mark Ortwein

Horn

Robert Danforth, *Principal*
The Robert L. Mann and Family Chair
Richard Graef, *Assistant Principal*
Julie Beckel Yager
Jerry Montgomery
The Bakken Family Chair
Jill Boaz

Trumpet

Conrad Jones, *Principal*
The W. Brooks and Wanda Y. Fortune Chair
Robert Wood
Marvin C. Perry II, *Assistant Principal*

Trombone

James Beckel, *Principal*
K. Blake Schlabach, *Assistant Principal*
Riley Giampaolo

Bass Trombone

Riley Giampaolo
The Dr. and Mrs. Charles E. Test Chair

Tuba

Anthony Kniffen, *Principal*

Timpani

Jack Brennan, *Principal*
The Thomas N. Akins Chair
Craig A. Hetrick, *Assistant Principal*

Percussion

Braham Dembar, *Principal*
Craig A. Hetrick
Pedro Fernandez

Harp

Diane Evans, *Principal*
The Walter Myers Jr. Chair

Keyboard

The Women's Committee Chair
Endowed in honor of Dorothy Munger

Personnel

K. Blake Schlabach, *Manager*
L. Bennett Crantford, *Assistant Manager*

Library

James Norman, *Principal Librarian*
Laura Cones, *Assistant Principal Librarian*
Susan Grymonpré, *Assistant Librarian*

Stage

Quentin L. Quinn, *Manager*
Kenneth Bandy, *Technician*
P. Alan Alford, *Technician*
Steven A. Martin, *Technician*

2016-17 NEW MUSICIANS

Riley Giampaolo, Trombone



Conrad Jones, Principal Trumpet



Zachary Collins, Viola



At the end of the season, the ISO awarded Concertmaster Zach De Pue with the Patch Award for his extraordinary service to the orchestra. The ISO also recognized the retirement of violist Barbara Radomski after 43 years of service.



HIGHLIGHTS OF THE YEAR!



KROGER SYMPHONY ON THE PRAIRIE

The ISO proudly announced a new partnership to kick off the summer season, as Kroger stepped up quickly to become the title sponsor of *Symphony on the Prairie*. We are grateful for Kroger's generous support in a time we truly needed it, and look forward to many summers together in the future!



BALANCED BUDGET

For the fourth time in the last five years, the ISO has maintained a balanced budget. Thanks to the support of our generous donors and sponsors, execution of aggressive sales goals, and fiscal responsibility across the organization, we are proud to share this accomplishment with our community.



EARLY CONTRACT APPROVAL

Musicians of the ISO ratified a new collective bargaining agreement – a year ahead of the expiration of the current contract! This shared commitment to the future of the ISO runs through the 2019-2020 season.



WORLD PREMIERES

The 2016-2017 season brought several world premiere performances to the Hilbert Circle Theatre stage. The ISO commissioned Dejan Lazić's *Mozart & Salieri*, which debuted in our concert hall. With the original score to *An American in Paris* long lost, the ISO premiered the newly-recreated orchestra parts, which replicate the original note-for-note. *Harry Potter and the Prisoner of Azkaban*™ saw its first concert performance with the ISO, and The Doo Wop Project premiered their orchestra show with the ISO.



REACHING NEW AUDIENCES

From *Film + Orchestra* concerts to Stella Artois *Happy Hour at the Symphony*, IPL *Yuletide Celebration*, and more, the ISO is constantly finding ways to engage new households in the magic of our music. Last season we saw a **44% increase** in new households over the previous year!



MISSION OF THE INDIANAPOLIS SYMPHONY ORCHESTRA

**THE MISSION OF THE
INDIANAPOLIS SYMPHONY
ORCHESTRA IS TO INSPIRE,
ENTERTAIN, EDUCATE, AND
CHALLENGE THROUGH
INNOVATIVE PROGRAMS
AND SYMPHONIC MUSIC
PERFORMED AT THE
HIGHEST ARTISTIC LEVEL.**



INSPIRE

Our Conductor Laureate Raymond Leppard returned to the Hilbert Circle Theatre stage on October 28, leading the ISO for Mozart's expressive Symphony No. 29. Maestro Leppard also conducted one of his favorites, "In London Town" by Sir Edward Elgar.



The 2016 *Opening Night Gala*, presented by the Christel DeHaan Family Foundation, celebrated Indiana's Bicentennial, along with the 100th birthday of the Hilbert Circle Theatre. Principal Pops Conductor – and Indiana Living Legend – Jack Everly led the star-studded evening featuring Broadway's Megan Hilty and actor George Takei, with special appearances by Peyton Manning, vocal superstar Angela Brown, and Pink Martini's Thomas Lauderdale.

For the world premiere of ISO commission *Mozart & Salieri*, composer and pianist Dejan Lazić joined the orchestra for his work's first public performances. Audiences were able to learn about the composition process, as Dejan and Maestro Urbański provided a fun and informative discussion before each performance.



The Fifth Third Bank *Lunch Break Series* continued for its fourth year, providing opportunities for music lovers of all ages to enjoy lunchtime concerts for only \$5 each. Music Director Krzysztof Urbański conducted his first *Lunch Break* concert this year, opening the summer series with Brahms' Symphony No. 2.

ENTERTAIN

The ISO's *Film + Orchestra Series* continued, bringing many well-loved movies to the Hilbert Circle Theatre including:

- *Indiana Jones: Raiders of the Lost Ark* 35th Anniversary
- *Harry Potter and the Sorcerer's Stone*
- *Harry Potter and the Chamber of Secrets*
- *Harry Potter and the Prisoner of Azkaban* (World Premiere)
- *An American in Paris* (World Premiere)

“It was a whole new way to experience a movie I have enjoyed for many years. Enjoying the live symphony in conjunction with the movie added a new emotional and physical element that took it to a new level for me. – Kendra Luppino, ISO Patron”



In addition to wowing patrons with the theatricality of Stravinsky's *The Firebird*, our January 27 and 28 concerts featured Concertmaster Zach De Pue on Shostakovich's Violin Concerto No. 1.

“The ISO has a first-rate concertmaster in Zach DePue. It was fun to see him showing off his musical skills.”

– Rachel Thompson, ISO Patron



Jack Everly and the ISO celebrated the 50th anniversary of Star Trek with a tribute to science fiction's greatest themes – *Sci-Fi Spectacular!*

EDUCATE

The Metropolitan Youth Orchestra, presented by Roche, provided comprehensive services for 232 students and their families. MYO students receive low-cost lessons with professional educators, mentoring and college preparation opportunities, and support services for families to ensure their student's long-term personal success.



Participation in the Art of Leadership workshop expanded this year, with more than 200 corporate participants from organizations across the state. Our interactive professional development program uses music-making as a metaphor to explore universal leadership challenges. The workshop was included as part of a local conference, opening the door to new partnerships and expanding the ISO's exposure to our business community.

The *Teddy Bear Series*, presented by Anthem, premiered a new story for young audiences in its third year. *The Garden Symphony*, written by ISO violinist Victoria Griswold, follows a ladybug's search through the garden for her own special song. More than 1,300 children and their families moved to the music played live by an ISO quintet.



Our Duke Energy *Discovery Series* concerts, in partnership with Dance Kaleidoscope, helped to share a variety of musical styles with 15,922 local students and their teachers. Over the course of 12 concerts throughout the winter and spring, students expanded their knowledge of music and dance.

Sixty-six Central Indiana students joined their counterparts from the ISO to participate in our 26th annual *Side-by-Side* concert featuring a riveting performance of Mahler's Symphony No. 1.



I have so much respect for the ISO musicians and their commitment to our city and young musicians. It must be a great feeling to see the difference they are making in their lives.

— Rhoda Johnson

CHALLENGE



After the success of last season's mid-winter *Cosmos Music Festival*, Maestro Urbański brought audiences back to Earth this year with two weekends in January dedicated to the majesty of our home planet. The *Music of the Earth Festival* featured masterworks including Richard Strauss' *An Alpine Symphony* and Mahler's *Das Lied Von Der Erde* (*The Song of the Earth*).



The second *Infusion Music Festival* featured concerts by Amos Lee, Time for Three, and Paper Bird. The festival's central theme of environmental awareness was showcased through the performance of composer Mason Bates' *Liquid Interface* for Orchestra and Electronica and an evening of enlightening presentations from Central Indiana organizations.

The ISO's popular Stella Artois *Happy Hour at the Symphony* series continued, providing opportunities for new and returning attendees to meet, mingle, and enjoy casual concerts with unique programming, including January's Tchaikovsky and Drake mashup!



One of the most powerful works for orchestra and choir, *Carmina Burana* brought the ISO, the Indianapolis Symphonic Choir, and the Indianapolis Children's Choir together for a bold concert to end the indoor season.

ENGAGE

The Indianapolis Symphony Orchestra continued beloved traditions that keep many families and groups returning year after year...while presenting opportunities for new audiences to experience the ISO as well.

KROGER SYMPHONY ON THE PRAIRIE

The 2017 summer concert series brought a new partnership for the ISO, as Kroger was announced as the title sponsor of *Symphony on the Prairie*. We are so grateful that our friends at Kroger were able to step up when we needed it most to ensure the music continues in our summer series for years to come.

From Beethoven's Fifth to The Beach Boys, John Williams' movie themes, and our fan-favorite *Star Spangled Symphony*, it was a truly remarkable year on the Prairie. Gorgeous weather for the majority of the summer helped us to reach record-breaking attendance, as 123,668 music lovers joined their friends and families to picnic under the stars with us.



IPL YULETIDE CELEBRATION

The ISO's holiday tradition continued in its 31st year, as the *IPL Yuletide Celebration* brought nearly 50,000 to the Hilbert Circle Theatre. Hosted by *The Voice* winner Josh Kaufman, Yuletide continued to be the largest orchestra-produced holiday presentation of its kind.

Dozens of the most talented Broadway-style singers, dancers, and variety performers joined the musicians of the ISO for 31 performances over the course of three weeks. Principal Pops Conductor Jack Everly and the production team brought new elements to the stage while maintaining the standard favorites, including our tap dancing Santas and *'Twas the Night Before Christmas*.

LETTER FROM THE TREASURER

I am pleased to report that the Indianapolis Symphony Orchestra (ISO) successfully delivered a budget surplus from general operations of \$27K. This solid performance met the commitment by the Board and executive leadership to return the institution to a balanced budget in FY17 following its first general operating loss in four years in FY16. The general operating surplus for FY17 resulted from a combination of achieving a significant increase in earned revenue over the prior year, prudent expense management, and a reduction in medical claims during FY17 compared to the prior year.

Earned income increased \$2.2 million in FY17, mainly due to a significant 21% increase in ticketing revenue over the prior year's previous all-time record in overall ticket sales. Season subscription ticket sales in FY17 increased 3% over FY16, IPL *Yuletide Celebration* achieved record-setting sales and increased 21% over the prior year, and Kroger *Symphony on the Prairie* achieved record-setting sales in FY17, up 34% over FY16.

The ISO also had another successful fundraising year in FY17 with \$8.9 million in contributions. This marks the fifth consecutive fiscal year with contributed income of \$8.9 million or greater. This level of fundraising could not have been achieved without continued strong community support, and we are extremely grateful to the thousands of individuals, corporations and foundations who continue to invest in the ISO.

The ISO received \$4.6 million from the ISO endowment which was used for operations. This 5% draw rate for operations was the same as the draw rate for operations in FY16. The total endowment draw in FY17 was \$1 million less than FY16 because there was no required minimum funding contribution this year toward the pension plan. In FY16 the ISO made a pension contribution of \$9.1 million of which \$8 million was from a \$10 million grant from Lilly Endowment, Inc.

Operating expenses increased less than 1% in FY17 over FY16 demonstrating management's success in containing expenses while growing earned income as previously discussed.

The ISO Board of Directors is committed to ensuring that the institution continues to present the highest quality performances and programs while remaining on sound financial footing for many years to come. The financial turnaround in FY17 from the general operating deficit experienced in FY16 demonstrates management's ability to deliver a balanced budget.

As I complete my third and final year as Treasurer, I want to specifically acknowledge the work of the management team and employees of the ISO for working so diligently to achieve these positive results.



Michael Becher
Treasurer, Board of Directors

SUMMARY OF FINANCIAL POSITION

(in thousands of dollars)

August 31
2017

August 31
2016

SUMMARY OF OPERATING RESULTS AND CASH FLOWS

(in thousands of dollars)

August 31
2017

August 31
2016

This is a summarized version of the financial statements audited by Blue & Co., LLC

ASSETS

Cash	96	98
Pledges & Other Receivables (net)	5,408	4,892
Prepaid Expenses & Other Assets	486	702
Property & Equipment (net)	2,753	2,850
Interest in Net Assets of the ISO Foundation	98,235	93,016
TOTAL ASSETS	106,978	101,558

LIABILITIES

Accounts Payable & Accrued Expenses	1,556	2,182
Other Liabilities	144	199
Deferred Revenue	2,570	2,885
Intercompany Loans	804	-
Line of Credit	6,612	6,110
Pension Liability	2,932	5,866
TOTAL LIABILITIES	14,618	17,242

NET ASSETS

Unrestricted Net Assets

General Operating	(9,041)	(9,068)
Pension Plan	(3,732)	(7,155)
Board Designated	-	39
Facilities and Other	(171)	-
Total Unrestricted Net Assets	(12,944)	(16,184)

Temporarily Restricted

Society	7,070	7,484
ISO Foundation	65,685	60,467
Total Temporarily Restricted Net Assets	72,755	67,951

Permanently Restricted

ISO Foundation	32,549	32,549
----------------	--------	--------

TOTAL NET ASSETS	92,360	84,316
-------------------------	---------------	---------------

TOTAL LIABILITIES AND NET ASSETS	106,978	101,558
---	----------------	----------------

REVENUE

Earned Revenue

Ticket Sales & Fee Income	10,737	8,723
Rental Income	619	524
Program Advertising	178	137
Education	158	152
Other Earned Revenue	131	105
Total Earned Revenue	11,823	9,641

Contributed Income

Annual Fund	8,885	9,067
Capital Campaign	-	243
Project Funding	476	485
Other Contributed Income	238	238
Total Contributed Income	9,599	10,033

ISO Foundation	4,591	5,577
-----------------------	--------------	--------------

TOTAL REVENUE	26,013	25,251
----------------------	---------------	---------------

EXPENSES

Orchestra Operations	10,289	10,556
Concert Production	6,322	5,935
General & Administrative	2,462	2,522
Marketing	2,036	2,037
Facilities	1,683	1,592
Development	1,306	1,387
Learning Community	705	725
Patron Services	409	391
Depreciation	470	421
Other	304	246

TOTAL EXPENSES	25,986	25,812
-----------------------	---------------	---------------

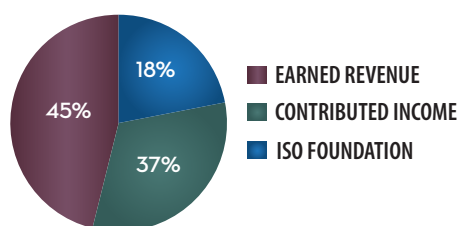
CHANGE IN NET ASSETS, GENERAL OPERATING	27	(561)
--	-----------	--------------

ADJUSTMENTS TO CALCULATE NET CASH FLOW

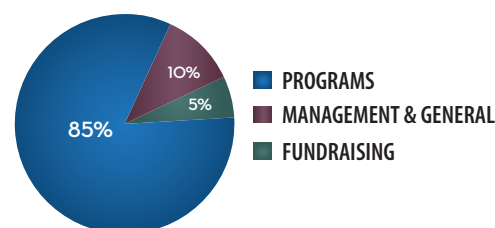
Defined Benefit Pension Plan Expense	489	638
Cash Contribution to Pension Plan	-	(1,118)
Depreciation Expense	470	421
Capital Expenditures	(373)	(813)
Advances on Intercompany Loans	804	-
All Other Cash Flows (net)	(1,419)	1,469

NET CHANGE IN CASH	(2)	(36)
---------------------------	------------	-------------

FY 17 OPERATING INCOME BY SOURCE



FY 17 OPERATING EXPENSE BY FUNCTION



WHY WE GIVE

The Indianapolis Symphony Orchestra relies on the generous support of our donors and sponsors to ensure our community is enriched with programming of the highest artistic quality. Throughout the year, our benevolent supporters share their reasons for giving to the ISO.

“Several years after becoming subscribers, we realized that ticket sales are only a portion of funds necessary to sustain a major orchestra and retain excellent musicians. We wanted to do more so we became donors and that has allowed us to receive invitations to some exciting events. We are very proud to be part of the ISO and support its wonderful administrative staff.

– David & Barbara Malson, ISO Donors & Pops Subscribers”



“We understand the importance of the ISO and other cultural attractions as essential elements in creating and growing a well-rounded business environment and an attractive place to live. The Orchestra’s educational programs and community outreach are essential to encouraging young people to play instruments as well as building future audiences.

– Peggy and Byron Myers, ISO Donors & Classical Subscribers”

“Working with the Indianapolis Symphony Orchestra is an extension of our commitment to make the world a better place. The ISO does so through music. We do it through food. And with that combination, the best in each field, it is hard to imagine a more uplifting partnership than Kroger *Symphony on the Prairie*.

– Katie Wolfram, Former President, Kroger Central Division”



“Printing Partners gives to the Symphony because it is good for business. Having a world-class symphony is essential to being a first-class city. The opportunity to attend Symphony performances is appreciated by our employees and proves to be an excellent form of client entertainment. We also support the educational outreach the Symphony provides. Through its *SymFUNy Sundays* performances, young audiences develop an understanding and appreciation of a wide range of music.

– Michael & Joel O'Brien, Corporate Sponsor, Printing Partners”

ARTISTIC INITIATIVES

The **Krzysztof Urbański Artistic Initiatives Fund** is a unique opportunity for donors to support the ISO's classical programming and special presentations. As the ISO continues to scale new heights both on and off stage, the ability to extend and sustain philanthropic support for activities and projects is key to realizing organizational ambitions.

Urbański's unique leadership in developing the Lilly *Classical Series* and special projects make these initiatives some of the most compelling programs in symphonic music today. There are significant costs associated with producing classical subscription concerts and specials, and the intent of the **Krzysztof Urbański Artistic Initiatives Fund** is to provide funding to support Maestro Urbański's special initiatives over the coming seasons.



The Indianapolis Symphony Orchestra continually boasts some of the most exciting symphonic pops series and specials in the country. Principal Pops Conductor Jack Everly's special initiatives have produced year after year of capacity crowds, and his Printing Partners *Pops Series* has remained a longtime favorite in the Indianapolis arts community. The ISO has set up a special fund dedicated to Jack Everly's artistic vision – the **Jack Everly Artistic Initiatives Fund** – to provide support for pops programming in the coming seasons.

The **Jack Everly Artistic Initiatives Fund** provides support for:

- Music arrangements, licensing fees, sheet music production, and rights clearances
- Guest artist expenses – including fees, travel, and incidentals
- Lighting design, stage design, costumes, choreography, and stage direction

The ISO was the first American orchestra to produce its own multi-disciplinary holiday program, and the IPL *Yuletide Celebration* continues in its 32nd year as the largest Broadway-style holiday presentation in North America. The **Yuletide Tradition Fund** was created to ensure this holiday tradition remains sparkling and jolly for future generations.

Investments in the **Yuletide Tradition Fund** help to cover the many costs involved in mounting Yuletide, including:

- Fees, travel, and lodging for singers and dancers
- Props and costumes
- Music rental and arranging
- Lobby décor and activities



At the close of the 2016-17 season, ISO donors contributed over \$450,000 in gifts and pledges to these three artistic initiative funds, above and beyond their annual support.

BY THE NUMBERS

- **181** Performances
- **295,556** Total Concert Attendance
- **123,668** Record-Breaking
Kroger Symphony on the Prairie Attendance
- **1,239** volunteers contributed **28,681**
hours of service to the ISO
- **4** balanced operating budgets in last **5** years
- **44%** increase in new household attendance
- **9,997** Student Tickets Sold
- **\$10,281,418** Total Overall Sales
- **4** Yoga with ISO Musicians sessions
- **4,873** Donors contributed **6,744** gifts
totaling **\$8.88** million in support of the ISO

THANK YOU DONORS, SPONSORS, & COMMUNITY!

The ISO is grateful to the following individuals, companies and foundations for their generosity and support in the 2016-2017 season. Each donor is a valued partner in our effort to achieve success on and off the stage. The listing reflects gifts processed from September 1, 2016 to August 31, 2017. Every effort has been made to ensure the accuracy of this list. If you would like to join this team of loyal supporters, please contact the ISO Development office at 317.713.3343.

\$100,000 AND ABOVE

Anonymous
B. M. "Marti" Ripberger
Yvonne H. Shaheen
Marianne Williams Tobias

Anonymous
Arts Council of Indianapolis and the City of
Indianapolis
The Christel DeHaan Family Foundation
Efroymson Family Fund
Eli Lilly and Company
Indianapolis Power & Light Company
Indianapolis Symphony Orchestra
Association
The Kroger Co.
Lilly Endowment, Inc.
The Margot L. and Robert S. Eccles Fund, a
fund of CICF

FOUNDERS' SOCIETY, MUSIC DIRECTOR (\$50,000+)

Anonymous
Phil & Colleen Kenney
Kay F. Koch
Sarah & John Lechleiter
Dr. Kenneth & Mrs. Debra Renkens
Robert & Alice Schloss
Richard D. Wood

Nicholas H. Noyes Jr. Memorial Foundation
Printing Partners
Ruth Lilly Philanthropic Foundation

FOUNDERS' SOCIETY, CONCERTMASTER (\$20,000-\$49,999)

Mr. & Mrs. Michael Becher
Christina Bodurow
Mr. & Mrs. Daniel P. Carmichael
Mr. & Mrs. Trent Cowles
Rollin & Cheri Dick
Dawn M. Fazli
James E. & Patricia J. LaCrosse
Dr. & Mrs. E. Henry Lamkin, Jr.
Dr. Gordon & Carole Mallett
Mrs. F. Bruce Peck, Jr.
Mrs. Robert L. Rudesill
Christopher A. Slapak & Michael J.
Robertson
Randall & Deborah Tobias

Dr. & Mrs. Eugene Van Hove
Martin & Mary Walker
David & Eleanor Wilcox
Kathy & Ralph Wilhelm

Anonymous
Arthur Jordan Foundation
Barnes & Thornburg LLP
BMO Harris Bank
Budweiser Zink Distributing Co, LLC
Chase
The Clowes Fund
Community Health Network Foundation
Duke Energy
The Glick Fund, a fund of Central Indiana
Community Foundation
Ice Miller, LLP
Indiana Arts Commission
National Endowment for the Arts
OneAmerica Financial Partners, Inc.
R.B. Annis Educational Foundation
Raymond James & Associates, Inc.
Roche Diagnostics
Salesforce
Scott A. Jones Foundation
Shaheen Family Foundation
St. Vincent Health
Telamon Corporation
Terry Lee Genesis & Terry Lee Hyundai
The Martin D. & Mary J. Walker Charitable
Foundation
Tobias Family Foundation

FOUNDERS' SOCIETY, FIRST CHAIR (\$10,000-\$19,999)

Anonymous (2)
The Honorable & Mrs. Alex M. Azar II
Mr. & Mrs. Robert Bader
Charlene & Joe Barnette
Ms. Sarah Barney
Mr. & Mrs. Barry J. Bentley
Suzanne B. Blakeman
Charles & Joyce Boxman
Bryan & Elaine Brenner
Dr. & Mrs. Thomas A. Broadie
Vincent & Robyn Caponi
Mr. Daniel Corrigan
Craig & Mary Fenneman
Don & Carolyn Hardman
Mr. Kent Hawryluk

Dr. Sharon Hoog
Emily & Peter Howard
Allan & Kathy Hubbard
Ms. Harriet Ivey & Dr. Richard Brashear
Bob & Rhonda Kaspar
Joseph & Kathy Kessler
Ned & Wendy Kirby
Cindy L. & Timothy J. Konich
Dr. & Mrs. Eugene P. Kroeff
Drs. W.H. & K.T. Landschulz
Ms. Karen Mangia
Mr. & Mrs. Bruce McCaw
The Alice Greene McKinney & E. Kirk
McKinney Jr. Fund, a fund of CICF
Karen Mersereau & Dr. Michael Helms
Mrs. Nancy Ann Morris
Mel & Joan Perelman
Walt & Mary Prouty
Mary Frances Rubly & Jerry Hummer
Fred & Bev Ruebeck
Mr. & Mrs. William N. Salin
Phyllis & Gary Schahet
Jeff & Cassandra Short
Mr. & Mrs. Richard Skiles
Mr. Kevin D. Taylor
Mr. & Mrs. Daniel O. Weisman
Roberta & Bill Witchger
Jim & Rita Zink

Anonymous Fund of Central Indiana
Community Foundation
ADL Charitable Trust
Ann & Gordon Getty Foundation
Anthem
Buckingham Foundation Inc.
Care Institute Group, Inc.
The Indianapolis Foundation, a CICF
Affiliate
Centaur Gaming
City of Carmel
CNO Financial Group
Community Health Network
Dow AgroSciences
Elba L. & Gene Portteus Branigin
Foundation Inc.
Erie Insurance
The Glick Family Foundation
Fenneman Family Foundation
Fifth Third Bank
The Frenzel Family Charitable Lead Trust
Huntington Bank

Indiana Members Credit Union
The Indiana Rail Road Company
Indiana University Health Partners
Industrial Dielectrics Holdings
Indianapolis Symphony Orchestra
Association South Group
Ronald McDonald House Charities of Central
Indiana and McDonald's of Central Indiana
Vectren Corporation

FOUNDERS' SOCIETY (\$5,000-\$9,999)

Anonymous (9)
Mr. & Mrs. Jeffrey M. Adams
Thomas N. Akins
Mr. & Mrs. Michael Alley
Bob & Pat Anker
Deborah & Douglas Balogh
Trudy W. Banta
Maestro Raymond Leppard &
Dr. John C. Bloom
Terry & Robert L. Bowen
Mr. & Mrs. John Bratt
Donald & Barbara Broadlick
Charles W. Brown
Mr. & Mrs. Walter P. Bruen, Jr.
Mike & Pat Byers
Ms. Jane Conley
Dexter & Rosemary Cooley
Mr. & Mrs. James M. Cornelius
Andrea Davis
David & Consuelo Davis
Erin & Scott Dorsey
Jack Everly & Ty A. Johnson
George R. Flexman
Russell Fortune III
Dr. & Mrs. Richard W. Garrett
Gary Ginstling & Marta Lederer
Larry C. & Lee A. Glasscock
Charles & Susan Golden
Jim & Roberta Graham
Mr. & Mrs. Thomas W. Grein
John & Chichi Guy
Steve L. Hamilton & Keith O. Norwalk
Richard & Elizabeth Holmes
Mr. & Mrs. W. Seymour Holt
Dr. Ann H. Hunt
Dr. & Mrs. Ronald Iacocca
Dr. & Mrs. Raymond V. Ingham
Carlyn Johnson
Mrs. Joan D. Kahn

Mr. James Kastner
 Kimra Kidd & Thomas Buehner
 Drs. Sandra & Charles Kinsella
 Mrs. James L. Kittle, Sr.
 David H. Kleiman & Susan Jacobs
 Mr. & Mrs. Joseph C. Lanning
 Mr. & Mrs. Eli Lilly II
 Dr. Richard E. Lindseth
 Gregory & Alexandra Loewen
 Dr. & Mrs. Carlos Lopez
 Malcolm & Joyce Mallette
 Mr. & Mrs. David Malson
 Mr. & Mrs. Morris Maurer
 John & Doris McCullough
 Boris E. Meditch
 Virginia Melin
 Jim Miller
 Mr. & Mrs. Dayton Molendorp
 Ellie, Weber & Emaline Morse
 Jerry & Anne Moss
 Dr. & Mrs. Daniel H. Mowrey
 John & Carolyn Mutz / Lumina Foundation
 Marc Nichols & Jamie Collins
 Jackie Nytes
 Mr. & Mrs. Charles J. O'Drobinak
 Michael P. & Leanne M. O'Neil
 Kay Pashos & Neal Steinbart
 Jack & Katie Patterson
 Donald & Karen Perez
 Bart Peterson
 Maribeth & Al Smith
 Susanne & Jack Sogard
 Joanne & Gerald Solomon
 Mr. & Mrs. Larry Speer
 Ann M. & Chris Stack
 Dr. Pamela A. Steed & Dr. Peter Furno
 Mr. & Mrs. John Thornburgh
 Margaret Watanabe
 David P. Whitman & Donna L. Reynolds
 Mrs. Lucy Wick
 Lynn & Andy Wiesman
 Jacquie & Fred Winters
 Dr. Christian Wolf & Elaine Holden-Wolf
 Sara & Michael Zeckel
 John & Linda Zimmermann
 Jennifer & Michael Zinn

Barefoot Wine
 The Barrington of Carmel
 Bose McKinney & Evans LLP
 Chubb Group of Insurance Companies
 Cornelius Family Foundation, Inc.
 Deloitte & Touche LLP
 DMC Holdings, Inc.
 Dorsey Foundation
 Faegre Baker Daniels
 Garmong Construction
 Haddad Foundation
 Honda

Howard K. Johnson Fund, a fund of The
 Indianapolis Foundation
 Huntington Bank
 The Indy Star
 Jungclaus-Campbell Co., Inc.
 The Julia L. and Andre B. Lacy Charitable
 Fund, a fund of CICF
 M/I Homes
 MacAllister Machinery Company, Inc.
 Macy's
 Mallor Grodner LLP
 Merrill Lynch
 SHC – Senior Home Companions
 MusicCrossroads
 The National Bank of Indianapolis
 NextGear Capital
 Regions Bank
 JK Family Fund, A Donor Advised Fund of
 Renaissance Charitable Foundation
 Salin Bank & Trust
 Van Riper Woodard Family Foundation
 Vectren Corporation
 WGU Indiana
 Witham Health Services

CONDUCTOR'S CIRCLE (\$2,500-\$4,999)

Anonymous (2)
 James Adams
 Dr. Albert Allen & Ms. Kathryn Maeglin
 J. Dara & Sherry Amlung
 Dr. & Mrs. Richard Barb
 Mary Ruth Barnard
 Frank & Katrina Basile
 Mary Clare & George Broadbent
 Dr. & Mrs. John T. Callaghan
 Elizabeth A. Chamberlin
 Nancy Christy
 James J. & Barbara Curtis
 Joanne Meyer Davis
 Manuel & Sally Debono
 Rick & Jody Dennerline
 Steve & Mary DeVoe
 Kerry Dinneen & Sam Sutphin
 Mr. & Mrs. Craig Doyle
 Robert W. Dyar, M.D.
 Mr. & Mrs. Neil Ellerbrook
 Dorothy Schultz Englehart
 Ms. Carol J. Feeney
 Dr. & Mrs. Michael E. Flaugh
 Dr. & Mrs. Mark Foglesong
 Steve & Lisa Ford
 Mr. & Mrs. L. D. Foster, Jr.
 Dr. & Mrs. Larry C. Franks
 Julia & Doug Gard
 Michael & Beth Gastineau
 Cora A. Gibson
 Mr. & Mrs. Alexander Goloschokin
 Dr. & Mrs. Christian Gries

Bob Hallam
 James & Paula Hancock
 Nancy J. Harrison
 Mr. Henry Havel & Ms. Mary Stickelmeyer
 Marsha A. Hutchins
 Larry & Annette Hutchison
 Mr. & Mrs. John C. Jenkins & Family
 Dr. & Mrs. C. Conrad Johnston
 Daniel H. Joseph & Liu Li
 Dr. Louis N Jungheim & Dr. Thalia I. Nicas
 Mrs. John E. Kalsbeck
 Donn & Dot Kaupke
 James & Jennifer Kelley
 Mr & Mrs. David Kelly
 Mr. Charles E. Kendall
 Mr. & Mrs. Michael J. Kenniff
 Peg Kimberlin
 Larry & Rose Kleiman
 Don & Jen Knebel
 Dr. Gwen & Mr. Robert Krivi
 Dr. Elisabeth Krug
 Andrew & Lynn Lewis
 Nancy Lilly
 Jim & Sarah Lootens
 Ralph & Nancy Lundgren
 Mary & Charles Matsumoto
 Dr. & Mrs. Douglas R. Maxwell
 Flip & Cindy Miller
 Milton & Margaret Miller
 Elizabeth & William Murphy
 Mr. & Mrs. Daniel Mytelka
 Mr. & Mrs. Robert H. Orr
 Noel & Beth Outland
 Jane & Andrew Paine
 Eloise Paul & Bill Lee
 Dorit & Gerald Paul
 Matthew & Christine Phillips
 Myrta J. Pulliam
 Scott & Susan Putney
 Dr. & Mrs. George F. Rapp
 Mr. & Mrs. Thomas Roberts
 Mrs. John R. Roesch
 Nancy Ray Ross
 Mrs. Lisa M. Sapp
 Dr. & Mrs. John F. Schaefer
 James & Mary Beth Schafer
 Jane & Fred Schlegel
 Klaus & Joel Schmiegel
 Marlyne Sexton
 Armen & Marie-Claude Shanafelt
 Eric Siemers & Peggy Edwards
 Dick & Susan Simon
 Mr. & Mrs. Jeff Smithburn
 Dee & Tom Spencer
 Sydney L. Steele
 Drs. Randall & Bonnie Strate
 Richard & Lois Surber
 James Sweeney
 Dr. & Mrs. Reed Tarwater

Mrs. David Thiel
 Jeffrey & Benita Thomasson
 Jerry & Linda Toomer
 Ms. Cathy Turner
 Joe & Sue Vertin
 Don & Coleen Walker
 Jane & Hugh Watson
 Emily A. West
 Dr. & Mrs. William J. Wheeler
 Anna S. & James P. White
 Bob & Marnie Wilken
 Mr. & Mrs. Clark Williamson
 James & Joyce Winner
 Terence & Margaret Yen
 Barrie & Margaret Zimmerman

500 Festival, Inc.
 CharBlue
 Indianapolis Foundation, a CICF Affiliate
 on behalf of Kiamesha Colom
 CSO Architects, Inc.
 Donovan CPAs & Advisors
 First Person
 Harlan Family Foundation
 Heritage Group
 Indiana American Water Co., Inc.
 The Indianapolis Recorder
 Indy Eleven
 Indy Podiatry
 InterDesign
 Milhaus Development
 Park Tudor School
 Paul Family Foundation, Inc.
 David and Arden Pletzer Endowment
 Fund, a fund of Legacy Fund
 Salin Foundation
 St. Richard's Episcopal School
 The Toomer Family Foundation
 Universal Windows Direct
 Western Reserve Partners, LLC

PRESIDENT'S CLUB (\$1,500-\$2,499)

Anonymous (3)
 Dr. & Mrs. Wayne Ambrous
 Kate & Dan Appel
 Nicholas Barbaro & Sue Ellen Scheppeke
 Spencer & Marcia Bavender
 Mr. Brett & Mrs. Shari Bayston
 Mark K. Bear
 Mr. & Mrs. Laurens Beyland
 Jay & Julie Bishop
 Carole & Sam Bixler
 Mr. & Mrs. Jesse L. Bobbitt
 Kirk & Sharon Boller -- Bottom-Line
 Performance Inc
 Gordon & Celia Bruder
 Kenneth & Patricia Burow
 Mr. & Mrs. John Campbell

Mr. & Mrs. Albert Chen
 John & Ulla Connor
 Chris W. & Lesley J. Conrad
 Bill & Angela Corley
 Dave & Christie Crockett
 Cummings Family
 Mr. & Mrs. Bert Curry
 Mr. & Mrs. Gregory C. Davis
 Ann & Kenneth Dee
 Dennis K. Dickos, M.D.
 Mr. & Mrs. Erol R. Diller
 Mr. & Mrs. Robert M. Donovan
 Dr. & Mrs. Christopher Eddy
 Miss E. Frances Eickhoff
 Robert & Joy Elzer
 Andrew & Irene Engel
 John N. & Julia Luros Failey
 Michael & Ardith Fleetwood
 Dr. Norm & Adrienne Fogle
 Mr. & Mrs. Raymond Gibson
 Steven M. Giovangelo & Gerald J. Bedard
 Drs. Jean & Gerald Godfrey
 Dr. Lawrence I. Goldblatt
 Leonard & Rikki Goldstein
 Mr. Ray E. Gotshall
 Joe & Kathy Grahm
 Mr. & Mrs. Berl J. Grant
 Mr. & Mrs. Robert Gregory
 Ms. Julie Griffith
 Dr. Kathleen Hacker & Jerry Hacker
 Fred & Alice Hecker
 Mike & Noel Heymann
 Mr. & Mrs. Gerald V. Hinchman
 Mr. & Mrs. V. William Hunt
 Mr. Gerald R. Jenn
 Mr. & Mrs. Richard Johnson
 Dr. & Mrs. Philip E. Johnston
 Dana & Marc Katz
 Mr. Doug Klitzke
 Col. A. D. Kneessy
 Tim, Amy & Matthew Konrad
 Dr. & Mrs. Richard Lasbury
 Bob & Maureen Lee
 Cindy & Rick Leffler
 Dennis & Karen Licht
 Mr. & Mrs. Allan Litz
 Deborah & Joe Loughrey
 Mr. Kevin Malley & Mr. Ronald Nobles
 Michael & Jill Margetts
 Jon D. Marhenke, M.D.
 Mr. & Mrs. Ken Matsumoto
 Elaine M. Mattson
 Ann & John McGrath
 Alan & Ann McKenzie
 Mr. & Mrs. Robert B. McNamara
 Susanah M. Mead
 Dr. & Mrs. David Miller
 Mr. & Mrs. Robert E. Miller
 Dr. & Mrs. Phillip G. Mosbaugh

Sarah Myer
 F. Timothy & Nancy Nagler
 Bob & Dale Nagy
 Mr. & Mrs. Guido Neels
 Mr. & Mrs. John S. Null
 Thomas & Stacy O'Leary
 Allen H. Pekar
 Pat Perkinson
 Marian Pettengill
 Beverley & Bill Pitts
 Barbara Poulsen
 Jeff & Clare Quinn
 Jean & Lamar Richcreek
 Mark & Susan Ridlen
 Mr. & Mrs. Randall Riggs
 Dr. Merrill Ritter
 N. Clay & Amy Robbins
 Joseph & Leanna Roberts
 Mr. & Mrs. Byron Robinson
 Dr. & Mrs. Randall G. Rowland
 Col. & Mrs. Cecil Salter
 Dave & Marcia Sapp
 Roger & Barbara Schmenner
 Jerry & Rosie Semler
 Carson Shadowen
 Michael & Priscilla Shaw
 William & Faye Sigman
 Nancy C. & James W. Smith
 The Sneed Family
 Steven A. Spaulding & Jennifer C.
 Hendrian
 Judy A. Springmire
 Rita & Larry Steinberg
 Ed & Barbara Stewart
 Mrs. Lynn Stocksill
 Jim & Cheryl Strain
 T.S. Sun
 Dr. Hadrian Szpurka & Dr. Anna Jankowska
 Stephen L. Tracy
 Dr. James & Linda Trippi
 Lynn C. Tyler
 John & Kathy Vahle
 Joe & Diane Vande Bosche
 Courtenay & Emily Weldon
 Mrs. Mary Whalin
 Dr. Forrest Williamson
 Bob & Debbie Wingerter
 Ken & Wendy Yerkes
 Josephine A. Yu
 Mr. & Mrs. Leslie R. Zimmerman
 Mary Ann & Gene Zink
 Sue & John Zinser

The Ackerman Foundation
 Batt Family Foundation
 BKD
 Conrad Indianapolis
 International Entertainment Bureau
 J. Solotken & Company, Inc.

The Jenn Foundation
 Joanne W. Orr Charitable Fund, a fund of
 The Indianapolis Foundation
 The Penrod Society

SYMPHONY CLUB ***(\$1,000-\$1,499)***

Anonymous (7)
 Mr. Norris Allen
 Mr. & Mrs. Roy & Jan Applegate
 Mr. & Mrs. Bradford H. Arthur
 Laura Walker & Vernon Back
 Mrs. Taylor L. Baker
 Terry & Patricia Balko
 Mr. Konrad Banaszak
 Linden & Allison Barber
 Mr. Todd Barrett
 Ms. Susan Bates
 David Bellman & Ingrid Fischer-Bellman
 Mr. Michael L. Blankenship
 Erv & Priscilla Boschmann
 Charles & Cary Boswell
 Ms. Marsha Bragg
 Douglas & Angela Braly
 Dr. Harry D. Brickley
 Matt & Janette Brown
 Terri Bruksch
 Lorene M. Burkhart
 Celeste & Derrick Burks
 Mr. & Mrs. E. M. Cavalier
 Casey Chell & Daniel Duarte
 Mr. & Mrs. Douglas Church
 Dan & Laura Conder
 The Corcoran Family
 Mr. & Mrs. Larry Cranfill
 Mrs. Mary C. Crean
 Rebecca & Larry Davis
 David & Brenda Day
 Mr. Douglas B. Day
 Dr. & Mrs. Frank Deane
 Ann Dettwiler
 Patty Donnelly & Robert Pozzebon
 Jeff & Ifen Donovan
 Mr. & Mrs. Dan Dumbauld
 Mrs. Nancy Dunn
 Ms. Phyllis Dye Turner
 Mr. & Mrs. Thomas J. Eggers
 Dr. & Mrs. William J. Ehlhardt
 David & Julie Eskenazi
 Dr. & Mrs. Harvey Feigenbaum
 Linda Felton
 Dean & Beth Flaris
 Gracia & Jim Floyd
 Ted & Lorrie Freeman
 Ann S. & David R. Frick
 Ms. Susan Fucik
 Mr. & Mrs. James F. Gallagher
 Dr. Karen & Thomas Gallagher
 Mr. Jerome Gassen & Ms. Nicole Weaver

Dorothea & Philip Genetos
 Marianne Glick
 Thomas & Nancy Grembowicz
 Peter Grossman & Pauline Spiegel
 Drs. Andrea & Paul Halverson
 Dr. James & Mrs. Pat Hamby
 Kenneth & Barbara Hamilton
 Mr. & Mrs. Richard A. Harrison
 Mr. & Mrs. Hayes
 Ms. Lisa Heid
 Mr. & Mrs. Eugene E. Henn
 Dr. David K. & Clarice F. Hennon
 Dr. & Mrs. Stephen Henson
 Mr. Ronald N. Hermeling
 William & Patricia Hirsch
 Mrs. Sue Hirschman
 C. Jane Hodge
 Ms. Ginny Hodowal &
 Mr. J. Douglas Madeley
 Jack & Ruth Hoover
 Clarena Huffington
 Drs. Meredith & Kathleen Hull
 Carolyn Humke
 Mr. & Mrs. Needham S. Hurst
 Krisztina & Ken Inskeep
 Mrs. Ninalou Isaacson
 Ms. Kristine Isenberg
 Ethan & Joyce Jackson
 Larry & Marianne Jacobi
 Patrick & Barbara James
 Sue Johnson
 Dr. & Mrs. Charles E. Jordan
 Mike & Linda Jordan
 Terry Kahn
 Freddie & Anne Kelvin
 Richard & Susan Kent
 Mrs. Norma King
 Mr. & Mrs. Daniel E. Klausner
 Steve & Sharon Klusman
 Richard & Roxanne Kovacs
 Terrence & Jodi Kunstek
 Mr. Jeffrey S Lahr
 Jonathan & Lisa LeCrone
 Mrs. Carl Leshner
 Mr. & Mrs. William Lindstaedt
 Mr. Tom Linebarger
 Grace Long
 Tim & Betty Lonis
 Lowell & Penelope Lumley
 Alex & Bridget MacAllister
 Mr. & Mrs. Donald R. MacPherson
 Ms. Barbara E. Mallett
 Mary Lynn Mancinelli
 Benton & Sandi Marks
 James R. & Rita E. Martin
 Ms. Marilyn Martin
 Stacy A. Maurer
 Michael & Patricia McCrory
 Craig & Kathleen McGaughey

Mr. & Mrs. Thomas McGinley
 Myron J. McKee
 Marni McKinney
 Nancy L. McMillan
 Mr. & Mrs. Richard Menke
 Mr. Allen & Mrs. Deborah Miller
 Earl Miller & Ek-Leng Chua-Miller
 Dr. William A. Mirola
 Dr. & Mrs. Patrick J. Murphy
 Ann & Jim Murtlow
 Peggy & Byron Myers
 Jack & Judy Myers
 Don Nead & Caryl Matthews
 Timothy S. Needler
 David & Diane Nesbitt
 Lara Noren
 Shirley L. Paddock & Greg Riffe
 Rev. Barb & Mr. Fred Parker
 Mrs. Karen L. Parrish
 Linda Pence
 Gayle L. Phillips
 Lois Pless
 George & Christine Plews
 Christine & Ken Price
 Larry & Nancy Pugh
 Roger & Anna Radue
 Patricia L. Ragan
 Mr. Alan & Mrs. Deborah Rasper
 Scott A. Reef
 Bob & Carol Reynolds, Barnes & Thornburg
 MaryAnn Ridder
 William R. & Gloria Riggs
 Mr. Larry Roan
 Peggy L. Robinson
 Dr. & Mrs. Andreas Sashegyi
 Roderick & Anne Scheele
 Ms. Silvana Schuster
 John Seest
 Dr. & Mrs. William Segar
 Donald L. & Deborah Farmer Smith
 Mary Solada
 Christy & Jeffery Soldatis
 Mr. & Mrs. Richard Spaulding
 Betty & Alan Stanford
 Barb Stang
 Betty Stilwell
 Mr. Eric Bretzman & Dr. Shelley Stiner
 Mr. Bill & Mrs. Linda Strickland
 Nela Swinehart & Lonny Bayha
 Mr. John Tan
 Gene & Rosie Tanner
 M. C. Tanner
 Kirk & Jo Taylor
 Phillip A. Terry
 The Throm Family
 Douglas L. Tillman
 Kenneth L. Turchi
 Jim & Leah Turner
 Lawrence & Bernice Ulrich

Gareth M. Vaughn
 Mark Wagner
 Mrs. Phyllis West
 L. Alan & Elizabeth Whaley
 Meg Williams
 Mr. & Mrs. Meredith L. Wilson
 Mr. & Mrs. Robert Witt
 Turner & Diann Woodard
 Diana & Dan Yates

The Ruth E. Stilwell Endowment Fund, a fund of CICF
 The Dr. Lawrence M. and Eldoris J. Borst Family Fund of the CICF
 Gracia E. Johnson Foundation
 Gregory & Appel Insurance
 The Humke Foundation, Inc.
 Marni McKinney Foundation
 Monarch Beverage Company
 The Blake Lee & Carolyn Lytle Neubauer Charitable Fund, a fund of the Legacy Fund
 Ricker Oil Company, Inc
 RSE Realty, Inc
 Taylar Development

**VIRTUOSO
 (\$750-\$999)**

Anonymous (5)
 Dr. & Mrs. Bill Allen
 Mr. Wilbur L. Appel, Jr.
 Dale & Barb Benson
 John & Reita Bertsch
 Mr. & Mrs. Borissov
 Christine & Robert Broughton
 Sandra L. Burns
 John & Janeen Burrows
 Catherine Clements & Jay Barbus
 Kevin Clements
 Mr. & Mrs. Tom Cooper
 Audrey E. Corne RN, EdD
 Patrick & Jennifer Cross
 Ken & Kitty Decker
 Mr. & Mrs. Frank Delisle
 Daniel & Virginia Dolezal
 Nola Gentry & Ned Derhammer
 Mr. & Mrs. Jerry Gershman
 Mr. Scott & Ms. Amy Goldsmith
 Brian & Claudia Grant
 John & Mary Ann Grogan
 Susan C. Guba
 Mr. & Mrs. Thomas G. Harvey Jr.
 Mr. & Mrs. Jerome T. Henning
 Hannah & Ben Huddleston
 Patrick F. Jessee
 Walter G. Justus
 Mr. Richard & Mrs. Gwen Knipstein
 Craig & Kathy Leafgreen
 Reverend Dr. Joan Malick

Jeffrey & Christine Marks
 John & Kay Mastarone
 Dennis & Anne McCafferty
 Mrs. Sandy McLean
 Mr. & Mrs. Robert Medsker
 Ms. Kathleen Munsch
 Dr. John A. & Cinda Overman
 Sally & Jay Peacock
 Anne K. Perry & Marvin C. Perry, II
 Michael Pettry & John Mainella
 Dr. & Mrs. David Porter
 Brian & Sabine Quick
 Mr. Bernard Reed
 Edward & Janet Ryan
 Mr. Henry A. Ryan
 Mr. & Mrs. Robert Rynard
 Mr. & Mrs. Jeffrey Schmahl
 Sandra & Tuck Schulhof
 Dr. & Mrs. Robert K. Silbert
 Linda Sturges
 Greg & Linda Sykes
 Mrs. Maggie Tatter
 Rachel Tomasik
 Ms. Jane Tomlin
 Lance & Laura Trexler
 Mr. Charles Warren
 Paul & Gretchen Watson
 Mr. & Mrs. Dale Weiler
 Ray & Lucinda Wilson
 Thomas & Elizabeth Wright
 Richard E. Ziegler

Hendricks County Community Foundation
 James O. & Alice F. Cole Foundation

**CONTRIBUTED GOODS AND SERVICES
 (\$5,000 AND ABOVE)**

Thomas N. Akins
 Barefoot Wine
 Blue & Co., LLC
 DCG: Digital Color Graphics
 Enflora Flowers for Business
 The Indy Star
 Kinetico Quality Water Systems
 Printing Partners
 Second Helpings
 Mr. & Ms. Jian-Wen Tong

ISO ADMINISTRATION

As of 8/31/17

EXECUTIVE OFFICE

Steve Hamilton, *Interim Chief Executive Officer*
Laura Irmer, *Executive Assistant*

OPERATIONS

Danny Beckley, *Vice President and General Manager*
Philomena Duffy, *Operations Coordinator*

ORCHESTRA OPERATIONS

K. Blake Schlabach, *Orchestra Personnel Manager*
L. Bennett Crantford, *Assistant Personnel Manager*
Bekki Witherell Quinn, *Administrative Assistant*

OPERATIONS AND FACILITIES

Katie Angel, *Production Manager*

AUDIENCE SERVICES & EVENTS

David Armstrong, *Director of Audience Services*
Donna Finney, *Volunteer Services Manager*
Kalyn Smith, *House Manager*
Frances Heavrin, *Event Coordinator*

ARTISTIC ADMINISTRATION

Katie McGuinness, *Director of Artistic Planning*
Hannah Reffett, *Manager of Artistic Planning*
Ty A. Johnson, *Senior Director, Pops Programming and Presentations*
Brandy Rodgers, *Senior Manager, Pops, Yuletide Celebration & Symphonic Pops Consortium*
Mallory Essig, *Manager of Guest Artists and Pops Coordination*

DEVELOPMENT

Casey Chell, *Director of Development*
Rita Steinberg, *Senior Major Gift Officer*
Missy Eltz, *Director of Development Operations*
Meg Williams, *Director of Development, Corporate and Foundation Giving*
Melissa Weseli, *Associate Director of Corporate Giving*
Sally Meyer Chapman, *Associate Director of Foundation Giving*
Carol Ann Arnell, *Special Events and Donor Benefits Manager*
Allison Gehl, *Gift Officer*
Victoria Ramsay, *Individual Giving Associate*
Tom McLamney, *Gift Processing Associate*
Catherine Lockhart, *Corporate Relations Associate*
Beckie Kern, *Development Assistant*

MARKETING & COMMUNICATIONS

Sarah Myer, *Director of Marketing*
Jennifer Welch, *Art Director*
Joshua Shuck, *Group Sales Manager*
Mary Ferguson, *Audience Development Manager*
Marci Taylor, *Graphic Designer*

COMMUNICATIONS

Kristin Cutler, *Director of Communications*
Leila Viera, *Publications Manager*
Lauren King, *Digital Marketing and Communications Manager*
Marianne Williams Tobias, *Program Book Annotator*

PATRON SERVICES

David Storms, *Box Office Manager*
Elizabeth Watts, *Senior Customer Care Representative*
Anita Blackwell
Janine Knuutila
Nick Neukom
Carolyn Kupchik
McKenzie Witherell
Kim McManus
Customer Care Representatives

LEARNING COMMUNITY

Beth Perdue Outland, *Vice President, Community Engagement & Strategic Innovation*
Endowed by Mr. and Mrs. William L. Fortune
Betty Perry, *MYO Founder and Artistic Director Emeritus, ISO Community Ambassador*
Ruth Wolff, *Director, ISO Learning Community*
Krystle Ford, *Artistic Director, Metropolitan Youth Orchestra*
Perry A. Accetturo, *Program and Communications Manager*
Megan Masterman, *Education Program Manager*
Andrea Fjelde, *Learning Community Coordinator*

FINANCE

Steve L. Hamilton, *Vice President of Finance and Chief Financial Officer*
Adam White, *Controller*
Teaka Vest, *Staff Accountant*
Jennifer Morrell, *Accounts Payable Coordinator*

INFORMATION TECHNOLOGY

Dee Dee Fite, *Director of Technology*
Molly Inglish, *Manager of Patron Technology*

HUMAN RESOURCES

Larry R. Baysinger, *Director of Human Resources*
Melissa Sanders, *Human Resources Generalist*

CREDITS

ISO Annual Report | Editor: Kristin Cutler | Design: Jennifer Welch | Printing: Printing Partners
Photography: Michelle Craig and Thomas J. Russo

