



aes Indiana

YULETIDE CELEBRATION

INDIANAPOLIS  SYMPHONY ORCHESTRA

Sandi Patty

Host

Jack Everly

Principal Pops
Conductor



Hoosier Village

Known for its upscale, maintenance-free living, Hoosier Village is now thrilled to announce a new opportunity for high-end living: Magnolia Trace Townhomes. These stunning homes are the latest addition to our beautiful 300-acre community. Boasting ample living space, two or three bedrooms, private elevators, oversized two-car garages, and luxury finishes, attention to detail and impeccable service define Magnolia Trace Townhomes at Hoosier Village.

As a non-profit life plan community, Hoosier Village provides a rewarding lifestyle with a range of amenities and services for those 62+. In addition to our independent living options, we also offer a full range of supportive care services, restaurants, pickleball courts, indoor pool, park, and more. Regardless of your needs, we have the perfect option for your next chapter!



FOR MORE INFORMATION, CALL 317.899.9508



9891 Purple Plum Lane
Indianapolis, IN 46268



MT
MAGNOLIA TRACE
AT HOOSIER VILLAGE



Dear Friends,

The 38th AES Indiana Yuletide Celebration is a holiday tradition here in Indianapolis that we are proud to sponsor.

This festive event powers the holiday spirit by bringing families and friends together to engage and celebrate the holiday season along with the orchestra members, vocalists, and cast of dancers and characters under the guidance of Maestro Jack Everly. Our commitment to the Indianapolis Symphony Orchestra and the Yuletide Celebration reflects AES Indiana's dedication to enhancing the lives of our customers, not only through energy solutions but also by contributing to the vibrancy of our community.

I hope you find joy this year's Yuletide Celebration and it inspires us all to carry the holiday spirit throughout the year. As we celebrate, please consider joining us in supporting our neighbors in need by

contributing to the AES Indiana Power of Change program. This initiative provides one-time grants to income-qualified customers facing financial difficulties.

For more information, visit www.aesindiana.com/power-change.

On behalf of all our people at AES Indiana, thank you for being a part of the Yuletide Celebration and for joining us in this beloved tradition!

With gratitude,

Brandi Davis-Handy
AES Indiana President



Power of Change

This holiday season, as we cherish traditions and community, let's also remember the spirit of giving. AES Indiana's Power of Change program assists those facing financial challenges by offering a one-time grant to income-qualified customers. As we come together in celebration, consider joining us and supporting our neighbors in need by contributing to Power of Change.



To donate visit:
www.aesindiana.com/power-change

Table of Contents

Featured Content

- 12 AES Indiana *Yuletide Celebration* History
- 15 AES Indiana *Yuletide Celebration* Company
- 18 AES Indiana *Yuletide Celebration* Program
- 21 AES Indiana *Yuletide Celebration* Sponsors
- 34 AES Indiana *Yuletide Celebration* Cast
- 51 2024 AES Indiana *Yuletide Celebration* Highlights
- 52 Christmas in the wings: A backstage look
- 56 AES Indiana *Yuletide Celebration* Production Staff

- 72 Lynn Society
- 74 Arts in Indy
- 76 Administration and Staff
- 77 Hilbert Circle Theatre Information
- 78 24–25 Season Sponsors

Artists

- 23 Jack Everly
- 24 Sandi Patty
- 27 Curtis Bannister
- 28 Orcenith Smith
- 28 Sherry Hong
- 30 Susie Mosher
- 30 Nick Hodge
- 30 Joe Martin
- 33 Expressenz

The Indianapolis Symphony Orchestra

- 6 Board of Directors
- 7 Musicians of the ISO
- 8 Music in My Life
- 10 Musicians Around Town
- 62 Indianapolis Symphony Orchestra Association
- 63 Endowment
- 66 Annual Fund
- 70 Tribute Gifts



Activities are made possible in part by Noblesville Creates, Indiana Arts Commission, a state agency, and the National Endowment for the Arts, a federal agency.

Welcome

Dear Friends,

Welcome to the 38th annual AES Indiana *Yuletide Celebration* at the Hilbert Circle Theatre! We are thrilled to have you join us for this enchanting holiday journey. From the moment you step into our beautifully decorated lobby, complete with a stunning holiday tree and delightful characters ready for photos, you'll be enveloped in the spirit of the season.

This year's celebration promises to be truly special, as we feature the phenomenal musicians of the Indianapolis Symphony Orchestra and welcome the incomparable Sandi Patty for her tenth and final appearance as host. Get ready to be captivated by our incredible guest artists, including the talented Curtis Bannister and Susie Mosher, stars of stage, film, and more.

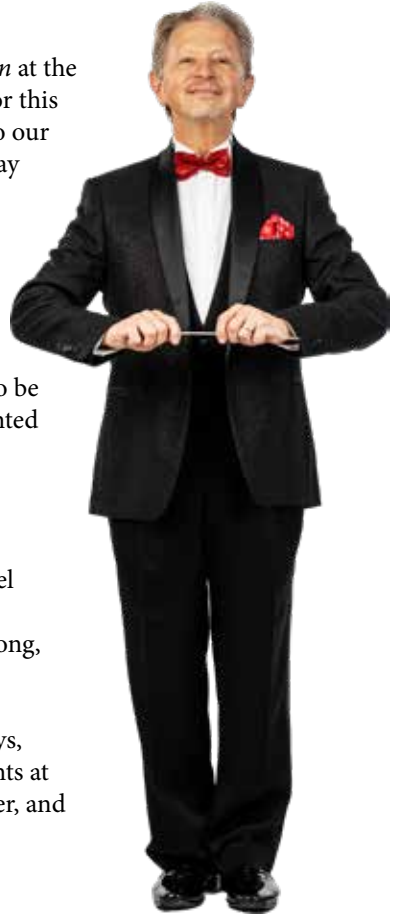
Returning to enchant us all is the extraordinary Nick Hodge, who will dazzle you with his mesmerizing Cyr Wheel performance. The internationally acclaimed dance troupe Expressenz is back, along with the ISO's very own Sherry Hong, who will take the stage for another breathtaking violin solo.

We invite you to experience the joy and magic of the holidays, surrounded by friends and family. With surprises and delights at every turn, we hope this evening brings you wonder, laughter, and cherished memories.

Thank you for being here—let the celebration begin!



Jack Everly
Principal Pops Conductor
Music Director of AES Indiana *Yuletide Celebration*



Board of Directors

Founded by Ferdinand Schaefer in 1930
Maintained and Operated by the Indiana Symphony Society, Inc.



Greg Loewen, *Chair*

Officers

*Greg Loewen**, *Chair*
*Phil Kenney**, *Vice-Chair*
*James M. Johnson**, *Chief Executive Officer*
*Christina Bodurow**, *Ph.D.*, *Secretary*
*Eric Sutphin**, *Treasurer*

Board of Directors

Christina Bodurow*, Ph.D.
Kiamesha Colom
Cheryl J. Dick
Alexandra French
Natalie Furney*
Matthew Gutwein
Peter W. Howard*, Ph.D.
James M. Johnson*
Phil Kenney*
Amy Kniffen
Liz Kyzr
Karen Ann P. Lloyd

Greg Loewen*
Bruce McCaw
Peter A. Morse Jr.*
Jackie Nytes*
Eloise Paul
Steve Rake
Samuel Rothstein
Nicholas Schellinger
Alice K. Schloss
Yvonne H. Shaheen*
Christopher Slapak
J. Albert Smith Jr.

Justin Sufan
Eric Sutphin*
Yecenia Tostado
LaTonya Turner, Ph.D.
Joanna Weiler
Tori Weyers
David Wilcox
Fred Winters
C. Daniel Yates

*Executive Committee

Board of Trustees

John M. Mutz, *Chair*
Charlene Barnette
Rollin M. Dick

Carolyn S. Hardman
Ann Hampton Hunt
Kay Koch

Gordon E. Mallett, Ph.D.
Charles O'Drobinak
Dr. Charles H. Webb Jr.

*Mission of the Indianapolis Symphony Orchestra:
To inspire, entertain, educate, and challenge through innovative programs
and symphonic music performed at the highest artistic level.*

Musicians of the ISO

Jun Märkl, Music Director • Jack Everly, Principal Pops Conductor
Su-Han Yang, Associate Conductor • Raymond Leppard, Conductor Laureate, 1987–2019

First Violin

Kevin Lin, *Concertmaster, The Ford-West Chair*
Peter Vickery, *Acting Associate Concertmaster, The Meditch Chair*
Michelle Kang, *Assistant Concertmaster, The Wilcox Chair*
Vincent Meklis, *Acting Assistant Concertmaster*
Philip Palermo, *Associate Concertmaster Emeritus*
Michelle Black
Sophia Cho
Sherry Hong
Shomya Mitra**
Katherine Lee Morris**
Sage Park**
Chak Chi Wong**
Hán Xiè+

Second Violin

Bryson Karrer, *Principal*
Byul (Bella) Seo, *Associate Principal*
Marisa Votapek, *Assistant Principal, The Taural Chair*
Melissa Deal
Jennifer Farquhar
Hua Jin
Yeajin Kim
Victoria Kintner
Jayna Park
Lisa Scott
Claire Thaler**

Viola

Yu Jin, *Principal, The Schlegel Chair*
Zhanbo Zheng, *Associate Principal*
Zachary Collins, *Acting Assistant Principal*
Caleb Cox
Nicholas Gallitano**
Yang Guo
Amy Kniffen
Li Li
Emily Owsinski**

Cello

Austin Huntington, *Principal*
Jonah Krolik, *Acting Associate Principal*
Nicholas Donatelle, *Acting Assistant Principal*
CJ Collins**
James Cooper
Stephen Hawkey
Adam Lee**
Sam Viguerie

Contrabass

Ju-Fang Liu, *Principal*
Robert Goodlett II, *Assistant Principal*
Mitchell Ballester
L. Bennett Crantford
Sharif Ibrahim
Brian Smith
Bert Witzel

Flute

Austin Brown, *Principal, The Sidney & Kathy Taural Chair*
Alistair Howlett, *Acting Assistant Principal*
Dianne Seo**

Piccolo

Dianne Seo**, *Janet F. and Dr. Richard E. Barb Chair*

Oboe

Jennifer Christen, *Principal, The Frank C. Springer Jr. Chair*
Tanavi Prabhu
Roger Roe, *Assistant Principal*

English Horn

Roger Roe, *The Ann Hampton Hunt Chair*

Clarinet

Samuel Rothstein, *Acting Principal*
Cathryn Gross
Campbell MacDonald**, *Acting Assistant Principal, The Huffington Chair*

Bass Clarinet

Campbell MacDonald**

Bassoon

Ivy Ringel, *Principal*
Michael Muszynski
Mark Ortwein, *Assistant Principal*

Contrabassoon

Mark Ortwein

Horn

Robert Danforth, *Principal, The Robert L. Mann and Family Chair*
Richard Graef, *Assistant Principal*
Julie Beckel
Alison Dresser
The Bakken Family Chair
Jill Boaz

Trumpet

Alexander Schwarz**, *Acting Principal Trumpet, The W. Brooks & Wanda Y. Fortune Chair*
Daniel Lewis
Micah Reinharz**
Acting Assistant Principal
Conrad Jones+

Trombone

Ryan Miller**, *Acting Principal*
Joseph Aumann**, *Acting Assistant Principal*

Bass Trombone

Riley Giampaolo
The Dr. and Mrs. Charles E. Test Chair

Tuba

Anthony Kniffen, *Principal*

Timpani

Jack Brennan, *Principal*
The Thomas N. Akins Chair
Craig A. Hetrick, *Assistant Principal*

Percussion

Braham Dembar+, *Principal*
Jon Crabiel**
Pedro Fernández
Craig A. Hetrick

Harp

Claire Thai, *Principal*
The Walter Myers Jr. Chair

Keyboard

The Women's Committee Chair
Endowed in honor of Dorothy Munger

Library

James Norman, *Principal Librarian*
Laura Cones, *Assistant Principal Librarian*
Cynthia Stacy, *Assistant Librarian*
Susan Grymonpré, *Assistant Librarian*

Stage

Kit Williams, *Stage Manager*
P. Alan Alford, *Technician*
Steven A. Martin, *Technician*
Patrick Feeney, *Technician*

*The Fifth Chair in the Second Violin Section is seated using revolving seating. String sections use revolving seating.

**Temporary Contract.

+Leave of Absence

Music in My Life: Ryan Miller, Trombone



Ryan Miller is the Acting Principal Trombonist of the ISO. He is a member of the Grand Teton Music Festival and teaches at the University of Indianapolis. Ryan's interests include climbing, hiking, cooking, reading, espresso, and spending time with his wife, Heather.

Tell us about your family.

I grew up in Dayton, Ohio. My dad was a public school music teacher and my mom was a school administrator. Some of my earliest memories are of listening to my dad practice trumpet at home. I grew up going to DCI shows, and in high school I started going to Dayton Philharmonic and Cincinnati Symphony concerts.

When did you start playing trombone?

I started playing trombone in 6th grade. I knew that I wanted to play a brass instrument like my dad, who played trumpet. I decided to play trombone because I didn't think I'd be able to remember what to do with three valves like the other brass instruments have. I thought the trombone's slide would be easier to use than valves. It turns out, I was wrong!

What do you enjoy about being part of the ISO?

Getting to play different music every week with the same great musicians makes everything work so well together. It's like the rest of the orchestra is a nearly completed puzzle and the only missing piece happens to be my part. Beyond everything musical, it is a group of really great people that I enjoy being around.

What piece or concert are you looking forward to playing this season?

I'm really looking forward to Strauss's *Ein Heldenleben*. It is a showpiece for everyone on stage. There are moments that are intensely moving. It's incredible music, and I can't wait for the ISO to play it!

What do you like best about *Yuletide Celebration*?

Beginning each *Yuletide* show feels really special. Excitement is buzzing backstage, and it's a thrill for the curtain to rise and see all the smiling faces in the audience! It's fun to bring family to *Yuletide*. My grandmother has been coming for years, and it's always fun to bring my nieces and nephews to the show.

What do you enjoy doing when you are not performing?

My wife and I like to climb. It's a great workout for your body and brain. We have some friends in the ISO that we climb with, both in gyms in Indianapolis and on trips to climb outdoors.

Any advice for a young person considering a career in the orchestra?

Take lessons, record yourself, and listen to as much music as you can. Live music counts for double!

What do you want our audience members to know about the ISO?

Thank you so much for coming! We are playing for you!

SCAN TO
LEARN
MORE



Volunteer^{!!!} WITH THE ISO!

INDIANAPOLIS  SYMPHONY ORCHESTRA

This is your chance to assist patrons at concerts at Hilbert Circle Theatre, special events, and *Kroger Symphony on the Prairie*.

- Give back to the community
- Support the ISO through your gift of time
- Earn a voucher to redeem for tickets to a future performance
- Receive free parking for your shift
- Have access to private events such as seasonal parties and musician meet & greets

Musicians Around Town

The ISO performed free concerts at three area high schools this fall: Southport High School on September 24, Arsenal Tech High School on September 25, and Shortridge High School on October 8. The concerts were led by Associate Conductor Su-Han Yang.

Broad Ripple Brewpub hosted Holiday Horns on December 1, featuring community members and several ISO horn players playing festive music for the holidays.

The Ortwein JazzTet is playing at the Chatterbox on December 7 from 9:30 p.m. to midnight. Mark Ortwein will be playing saxophones and electrified bassoon and Craig Hetrick will be on drums.

Melissa Deal is offering a string quartet program celebrating music of the Christmas season at the Latvian Church on December 8.

On December 9 at 6 p.m., members of the Indianapolis Symphony Orchestra brass section will perform Christmas music at St. Francis Episcopal Church in Zionsville. This concert is modeled after programs Rick Graef and Tony Kniffen performed together in Honolulu when they both were in the Honolulu Symphony Orchestra. Come to the concert and find out if Santa can play the French Horn! Tony will also be performing with local brass players on December 22 at Central Christian Church in Anderson and on Christmas Eve at First Baptist on the north side of Indianapolis.

Musicians of the ISO including Amy Kniffen and Jennifer Farquhar will provide music for a memorial service to honor homeless citizens of Indianapolis who have passed away this year. The service will be held at Roberts Park United Methodist Church on December 21, at 11 a.m., and is organized by the Coalition for Homelessness Support.

Join Ronen Chamber Ensemble during their current concert season, "Connections." The artistic and cultural connection between France and Russia is explored in Ronen's third program of the season, featuring Prokofiev's first violin sonata. Artistic Directors: Gregory Martin, Piano; Jayna Park, Violin; Alistair Howlett, Flute; Jennifer Christen, Oboe. Visit www.ronenchamber.org for more information.

March 23, 2025, 4 p.m.: Our Lady of Lourdes Church

March 24, 2025, 7:30 p.m.: Indiana Historical Society



Home for the holidays— here's how some of our musicians plan to celebrate!

Lawrence Central grad and ISO horn player Julie Beckel is looking forward to staying home for the holidays with her son and family, which includes retired ISO principal trombonist Jim Beckel.

Horn player Jill Boaz keeps busy during the holidays by painting oil portraits of people's pets.

Violinist Sophia Cho and cellist Stephen Hawkey, who met and fell in love in the ISO, are looking forward to their first Christmas together as a married couple in their new home!

ISO couple Jennifer Christen (oboe) and Alistair Howlett (flute), along with their sons Elliott (6) and Oliver (3) are looking forward to traveling to winter wonderland Buffalo, NY, this holiday season to see family! They are hoping for enough snow to sled, but not so much that they can't get to Grandma's house in the first place.

Principal horn Rob Danforth and his wife Coral are looking forward to spending time with their children over the holidays: Libby (photographer, Nashville, TN), Madeline (primary care physician, Philadelphia, PA), and Andrew (jazz and classical trombone, Brooklyn, NY). They will all miss daughter Katie who is in New Zealand this season performing as Associate Principal Oboe with the Auckland Philharmonia.

Jennifer Farquhar will be visiting her 99-year-old grandmother near Philadelphia this holiday season.

This Christmas, Nicholas Gallitano and his older siblings who live in New York City will be going back to their hometown of Brookline, Mass., to visit their parents and 96-year old paternal grandparents. In the lead-in to the holiday, his parents will be paying a visit to Indianapolis to catch one of the ISO's iconic *Yuletide* shows and to spend time with their youngest (and most beloved) child. He is looking forward to all of the family time and all of the food, lots of which will be representative of his Greek and Italian heritage.

Bass player Bob Goodlett, who has been in the ISO for more than 50 years, is looking forward to visiting with his grandchildren who live in Chicago, and having a visit from his son who plays bass in the Orchestre Symphonique de Montréal.

Tony and Amy Kniffen will be navigating an alternate route to South Carolina to see Amy's mom on Christmas day. Her mom says that her sweet little hometown looks entirely different after hurricane Helene. The home she grew up in is safe, though for the first time in family history, the freezer has been emptied because of a week-long power outage. Amy is grateful that her mom is fine and not sorry that the freezer got emptied.

ISO oboist Roger Roe and his husband Kent are helping with the Advent music at Central Christian Church, often collaborating with other ISO players to share their music in worship. After that, they will spend time with family and friends in Texas and Mexico.

When she's not playing with the ISO, Marisa Votapek enjoys teaching violin for students of all ages. She loves baking and cooking, and enjoys any opportunity to make cakes for friends and family. She plans on spending Christmas with her extended family in the Midwest, and she is planning a trip to Colombia in the new year with her sister.



aes Indiana

YULETIDE CELEBRATION

Est. 1986

Background

AES Indiana *Yuletide Celebration* has a rich 37-year history. Prior to the existence of this beloved family tradition, the Indianapolis Symphony Orchestra filled its December calendar with everything from Handel's *Messiah* and Bach's *Christmas Oratorio* to *The Nutcracker* with Butler University and holiday-themed Pops shows.

In 1986, the ISO changed gears completely and became the first American orchestra to create an original Broadway-style holiday extravaganza with singing, dancing, puppetry, and many more theatrical elements. The *Yuletide Celebration* started small, with only eight performances in the first year, and it has grown to be the largest orchestra-produced holiday presentation of its kind in North America. The ISO now presents on average 29 performances attracting nearly 40,000 people each December.

Host

This is singer Sandi Patty's tenth appearance in AES Indiana *Yuletide Celebration*, having been the host in 2000, 2002, 2005, 2007, 2010, 2013, 2015, 2017, and 2021. Many noted celebrities have hosted the AES Indiana *Yuletide Celebration*: veteran comedienne and star of stage, screen, and television Kaye Ballard (1991); 1981 Miss America and host of the Discovery Channel's *Home Matters* Susan Powell (1993); two-time Tony Award-winning actress Judy Kaye (1994–95); longtime star as "The Phantom" in Broadway's production of *The Phantom of the Opera*, Ted Keegan (1999); acclaimed singer

and actress who portrayed Dr. Josie Conklin on the ABC Television's daytime soap opera *One Life To Live*, Pamela Isaacs (2001); two-time Grammy Award-winning soprano Sylvia McNair (2003); legendary pop music icon Maureen McGovern (2009); singer Frankie Moreno (2019, 2022); opera star Angela Brown (2012, 2014, 2018); winner of *The Voice* Josh Kaufman (2016, 2018); and Ben Crawford (2012, 2014, 2023).

Conductors & Creatives

The first conductor for *Yuletide Celebration* was longtime Oklahoma City Philharmonic Music Director Joel Levine (1986–90). Following Maestro Levine were Indianapolis Opera Artistic Director James Caraher (1991), Boston Pops Music Director Keith Lockhart (1992–93), and current ISO Principal Pops Conductor Jack Everly (1994–present). Another noted member of the *Yuletide Celebration* artistic team was Broadway choreographer Mercedes Ellington, granddaughter of famed bandleader Duke Ellington, who choreographed elaborate dance elements for the show for 10 years (1991–2000). Current Choreographer and Director Jennifer Ladner started with the show as Dance Captain, and was then promoted to Assistant Choreographer shortly after. Jennifer then moved into the role of Choreographer and eventually into Director/Choreographer. Executive Producer Ty Johnson has also served as the first and only producer of *Yuletide Celebration*.



By the Numbers

There's a lot that goes into the show! The Indianapolis Symphony Orchestra's holiday production of the AES Indiana *Yuletide Celebration* includes:

- ❄️ **64** vocalists, dancers, actors, and specialized performers in the company
- ❄️ **49** production staff and crew
- ❄️ **12 tons** of scenery and light equipment
- ❄️ **10,700** different points of light within the scenery and pixel trees via fiber-optic lighting
- ❄️ Scores and parts for **33 songs** prepared by the music library for the show. This would be **9,500** printed pages, but many of our singers use iPads when learning music!
- ❄️ **480+** costumes and **120** props
- ❄️ **96** microphones
- ❄️ More than **2,600** batteries to power the artists' microphones during the course of the 25-performance run
- ❄️ **11 months** of planning, designing, fitting, altering, and sewing costumes
- ❄️ **12** snow machines
- ❄️ **380** hours rehearsed by Director/Choreographer Jennifer Ladner, the production staff, and cast
- ❄️ **141** hours for our stagehands and production team to load in the set—including **36** additional crew members—to prep, distribute, and tune sound gear, hang and focus the lights, and get the stage ready to shine!



- ❄️ **Principal Pops Conductor Jack Everly** dances with host **Sandi Patty** in 2017. This year, Sandi celebrates her **10th** AES Indiana *Yuletide Celebration*.



Every family has unique needs

At The Thompson Wealth Management Group, we provide customized guidance to help address your family's unique financial needs and goals.

The Thompson Wealth Management Group offers services in:

- Creating a tailored retirement income program
- Organizing your accounts, including 401(k) rollovers and IRAs
- Developing and managing custom, tax-considerate investment solutions
- Full-service asset, debt and cash flow management
- Asset-based and specialized lending

For a complimentary consultation or second opinion, please call us today.



The Thompson Wealth Management Group

Daniel P. Thompson, CRPC®

Managing Director – Financial Advisor

8888 Keystone Crossing, Suite 200

Indianapolis, IN 46240

(317) 810-5414 | www.thompsonwmg.com



**Wealth
Management**

The Thompson Wealth
Management Group

Investment and insurance products offered through RBC Wealth Management are not insured by the FDIC or any other federal government agency, are not deposits or other obligations of, or guaranteed by, a bank or any bank affiliate, and are subject to investment risks, including possible loss of the principal amount invested.

RBC Wealth Management does not provide tax or legal advice. All decisions regarding the tax or legal implications of your investments should be made in connection with your independent tax or legal advisor. No information, including but not limited to written materials, provided by RBC WM should be construed as legal, accounting or tax advice.

© 2023 RBC Wealth Management, a division of RBC Capital Markets, LLC, registered investment adviser and Member NYSE/FINRA/SIPC. All rights reserved. 23-IL-02914(10/23)

YULETIDE CELEBRATION

PRODUCED AND PRESENTED BY THE
INDIANAPOLIS SYMPHONY ORCHESTRA

Music Director
JACK EVERLY

Starring
SANDI PATTY

Featuring
CURTIS BANNISTER & SUSIE MOSHER

- also featuring -

**SHERRY HONG EXPRESSENZ
NICK HODGE JOE MARTIN**

ALEXA ABBOTT ISABELLA AGRESTA RD ALBRIGHT DAN ALLIS
JULIA BAILEY ERIN BENEDICT IAN BLACK CHLOE BOELTER
SHANNON CHRISTIE CAROLINE DURBIN OLIVIA ELLIOTT
LYNSEY FOERTSCH SYDNEY FOERTSCH JOEL FLYNN MARK GILGALLON
JERRY HACKER KATHLEEN HACKER SAWYER HARVEY KEIRA HIMES
JEN HUBER MICHAEL HUMPHREY DELANEY JACKSON KRISTAN JACKSON
HANNAH JEW ELLY KAUSER DOUG KING DANNY KINGSTON
ALIE KRYDER JAMEELAH LEAUNDRAM AMANDA MCCARTHY
ALY MELLIERE CHARLIE METZGER CHRISTINA NICASTRO
JARED NORMAN AMY OWENS PHOEBE OWENS JOSEPH PERKINS, JR
NATALIE RENEE KATHRYN ROTH ALLEN SLEDGE MALLORIE SINGH
ANNIE SMITH KATIE SCARLETT SWANEY SARAH TEWES
MADELEINE TRENT THATCHER TRENT ALIYA WARREN LOGAN WEBBER
J TYLER WHITMER ADAM WHITE CHRIS WIPER
ADDISON YANNEY ERIN YANNEY

Choreography and Stage Direction

Jennifer Ladner

Costume Design
Clare Henkel

Lighting Design
Stuart Duke

Vocal Director
Greg Sanders

Associate Lighting Design
Travis McHale

Line Producer
Brandy Rodgers

Sound Design
Alan Alford & Matt Kraus

Production Stage Manager
Ken Saltzman

Executive Producer
Ty A. Johnson

Stage Managers
**Lina Benich &
Matthew Meeks**

Salute to Sandi



2000



2002



2005



2007



2010



2013



10 Years
of Hosting!

aes Indiana
**YULETIDE
CELEBRATION**
INDIANAPOLIS SYMPHONY ORCHESTRA



2015



2018



2017



2021



YULETIDE CELEBRATION

December 6–December 23, 2024

Act One

O Come, All Ye Faithful
Sandi Patty & Company

John Reading
arr. Jack Everly

My Favorite Yuletide Things
Sandi Patty & Company

Richard Rodgers
& Oscar Hammerstein II

Let It . . . Snow!
**Sherry Hong & the Indianapolis
Symphony Orchestra**

Antonio Vivaldi /
Robert & Kristin Anderson Lopez

The Christmas Song
Curtis Bannister

Mel Tormé & Robert Wells

Sparklejollytwinklejingley
from *Elf: The Musical*
**Sandi Patty, Susie Mosher,
Expressenz & Company**

Matthew Sklar & Chad Beguelin

'Twas the Night Before Christmas
**Sandi Patty, Katie Scarlett Swaney,
Logan Webber & Company**

Ken Darby
Lyrics: Clement Moore
arr. Norman Luboff; Orch. Wally Stott

Merry Christmas, Merry Christmas
Yuletide Singers

John Williams

Peppermint Parade
Expressenz & Yuletide Dancers

arr. Jack Everly

*A Trans-Siberian Holiday:
Christmas Eve/Sarajevo 12/24*
Nick Hodge & Pixel Lights

Paul O'Neill & Robert Kinkel
arr. Bob Phillips

At Home with the Clauses
Sandi Patty & Joe Martin

arr. Jack Everly

Santa Claus is Coming to Town!
Yuletide Dancers & Expressenz

arr. Michael Gibson

INTERMISSION — Twenty Minutes

YULETIDE CELEBRATION

Act Two

A Tribute to Irving Berlin's *White Christmas*
**Sandi Patty, Curtis Bannister,
Expressenz & Company**

Irving Berlin
arr. Fred Barton & Jack Everly

Rudolph!
Expressenz

Johnny Marks
arr. Richard Hayman

Shopper's Lament
Sandi Patty & Susie Mosher

Piotr Ilyich Tchaikovsky
Lyrics: Aaron Fuksa & Ty Johnson

Mistletoe Mixtape 2024
Company

Various Composers

A Christmas Carol
Indianapolis Symphony Orchestra

Alan Silvestri

Canti di Natale: Gesu Bambino and Panis Angelicus
Curtis Bannister & Company

arr. Jack Everly

Silent Night
Sandi Patty

arr. Bob Krogstad

O Holy Night
Sandi Patty, Curtis Bannister & Company

Adolphe Adam
arr. David Clydesdale,
Phil Hall & Jack Everly

The December 6 and December 23 AES Indiana *Yuletide Celebration*
concerts are endowed by Marianne Williams Tobias

Understudies for Sandi Patty: Christina Nicastro & Katie Scarlett Swaney
Understudy for Susie Mosher: Katie Scarlett Swaney
Understudy for Curtis Bannister: Logan Webber

Length of performance is approximately two hours.
Recording or photographing of this performance is strictly prohibited.

Justin Stahl, Lobby Organist

INDIANAPOLIS | SYMPHONY ORCHESTRA



3 ^{\$}999
FOR

PLUS A FREE BONUS CONCERT

Give the *gift* of
music this season!



YULETIDE CELEBRATION

Title Sponsor



Dress Rehearsal Presenting Sponsor



Associate Sponsor



Supporting Sponsors



Patron Sponsors



Fogg Merkel Wealth Management Group
Kim Fogg
Tyler Merkel
Samantha Fogg

Daniel P. Thompson, CRPC®
Managing Director - Financial Advisor
www.thompsonwmg.com

Digital Sponsors



HEATING • COOLING
PLUMBING • ELECTRICAL





“BRAVO!”

– Lake City Bank is proud to support the inspiring work of the Indianapolis Symphony Orchestra.



lakecitybank.com

DANCE
KALEIDOSCOPE

SCHROTT
CENTER FOR
THE ARTS
**JAN
17-19**

Nothing is forever, darling

**FOR TICKETS VISIT
DANCEKAL.ORG**



CHRISTEL DEHAAN
ARTISTIC DIRECTOR

JOSHUA BLAKE CARTER

EXECUTIVE DIRECTOR

KIM GUTFREUND

Jack Everly, Conductor



Jack Everly is the Principal Pops Conductor of the Indianapolis Symphony Orchestra, Naples Philharmonic Orchestra, and the National Arts Centre Orchestra (Ottawa). He has conducted the

Los Angeles Philharmonic at the Hollywood Bowl, the San Francisco Symphony, the New York Pops at Carnegie Hall, and the Seattle Symphony.

As Music Director of the National Memorial Day Concert and *A Capitol Fourth* on PBS, Everly proudly leads the National Symphony Orchestra in these patriotic celebrations on the West Lawn of the U.S. Capitol. These concerts attract hundreds of thousands of attendees on the lawn and the broadcasts reach millions of viewers, making them some of the highest-rated programs on PBS.

Everly recently extended his contract with the Indianapolis Symphony Orchestra through 2026. He will then become Conductor Emeritus and continue to be the Music Director and conduct the AES Indiana *Yuletide Celebration* and the *Film Series* presented by Bank of America. He will also continue to make appearances on the *Printing Partners Pops Series* each season.

Everly led the ISO in its first Pops recording, *Yuletide Celebration*, Volume One. Some of his other recordings include *In The Presence* featuring the Czech Philharmonic and Daniel Rodriguez; Sandi Patty's *Broadway Stories*; the soundtrack to Disney's *The Hunchback of Notre Dame*; and *Everything's Coming Up Roses: The Overtures of Jule Styne*.

Originally appointed by Mikhail Baryshnikov, Everly was conductor of the esteemed American Ballet Theatre for 14 years, where he served as music director. In addition to his ABT tenure, he teamed with Marvin Hamlisch on Broadway shows that Hamlisch scored. He conducted Carol Channing hundreds of times in *Hello, Dolly!* in two separate Broadway productions.

Everly, a Hoosier native and graduate of the Jacobs School of Music at Indiana University, is a recipient of the 2015 Indiana Historical Society Living Legends Award and holds an Honorary Doctorate of Arts from Franklin College in his home state of Indiana. In 2023, he received the Sagamore of the Wabash award, the highest honor a Hoosier can receive, presented by Governor Eric Holcomb.

Everly is looking forward to spending Christmas Eve with his husband and their 16-month-old Golden Retriever Roxie Noel. Christmas day is spent at his mother-in-law, Carrol's, home, filled with wonderful family traditions and endless food. Incidentally, for many years, Carrol and her husband, Dale, opened their home and cooked Thanksgiving dinner for the entire cast of *Yuletide Celebration* during the early years of the show.

Everly has been a proud resident of the Indianapolis and Zionsville communities for more than 20 years and would like to thank his ISO musician colleagues for their continued commitment to excellence and for filling our community with music all year long.

Sandi Patty, Host



As one of the most highly acclaimed performers of our time with five Grammy® awards, four Billboard Music Awards, three platinum records, five gold records, and eleven million units sold, **Sandi Patty** is simply known as “The Voice.”

Sandi is the most awarded female vocalist in contemporary Christian music history, with 40 Dove Awards. She was inducted into the Gospel Music Hall of Fame in 2004 and as an Indiana Living Legend in 2007. She has released over 30 albums, including *Forever Grateful* (2016) and *Everlasting* (2013), which was nominated for a Dove Award for Inspirational Album of the Year in 2014. In 2014 she released her holiday recording, *Christmas Blessings* with exclusive special editions in Cracker Barrel Old Country Stores and Target Stores nationwide. Sandi’s live DVD and CD project chronicling her *Forever Grateful: The Farewell Tour*, released in 2017 and debuted with chart-topping success.

Sandi continues to appear in select specialty events, such as AES Indiana *Yuletide Celebration*, but has turned her focus toward mentorship of music and inspirational creatives.

Sandi was introduced to the world with her rendition of “The Star-Spangled Banner” during the rededication of the Statue of Liberty in 1986. Virtually overnight she became one of the country’s best-loved performers. Her version of the national anthem has become synonymous with patriotic celebration,

including performances at A Capitol Fourth with the National Symphony, the Indianapolis 500, the Dedication of Camp David Chapel, and ABC’s Fourth of July Special.

While her thirty-year career is heavily rooted in the gospel music industry, Sandi has had the opportunity in more recent years to extend her career outside the genre. Her debut full-length symphonic pops album *Broadway Stories*, conducted by Maestro Jack Everly, was released on October 18, 2011, to rave reviews. Sandi has performed with symphonies in New York, Boston, Cincinnati, Dallas, Baltimore, Houston, Oklahoma, and more. She also headlined the title role in sold out performances of the musical *Hello, Dolly!* with the Indianapolis Symphony Orchestra, co-starring Tony Award winner Gary Beach in January 2012.

In addition to her prolific musical career, Sandi is also an accomplished author. For the bestseller *Broken on the Back Row*, Sandi received the 2006 Silver Angel Award. Other book titles include *The Voice*, *Life in the Blender*, *Falling Forward*, *Layers*, and *The Edge of the Divine*. “Singing is my way to tell my story of hope, life, and love,” says Sandi. “I am grateful for the many opportunities God has given me to share my story.”

Sandi and her husband, Don, are “back home again” in Indiana, living on the southside of Indianapolis, and soaking in their semi-retirement. They are enjoying this season with family, including their 8 children and 12 grandchildren. Sandi is thrilled to return to serve as host of AES Indiana *Yuletide Celebration* and loves her ISO family! For more information about Sandi Patty, please visit www.sandipatty.com.



MEMBER
FDIC

Attentive local banking is
a tune everyone can enjoy.

Whether you prefer classical, jazz, or rock-and-roll, we have dependable financial services that will match your style. Visit **FirstMerchants.com** or call **800-205-3464** to see how we harmonize with your life.



First Merchants Bank
Helping you prosper

into
the
music

RYAN AHLWARDT
INDY NOW

JUN MÄRKL
MUSIC DIRECTOR



FREE EVENT! JOIN US FOR A CASUAL CHAT,
FOLLOWED BY AN ISO PERFORMANCE.



JANUARY 23 | BARTÓK
APRIL 24 | STRAUSS
JUNE 12 | BERLIOZ

INDIANAPOLISSYMPHONY.ORG

DOORS OPEN: 6:00 P.M.
PROGRAM STARTS: 6:30 P.M.

Your Season, *Your* Way!

Choose four or more performances from our 2024–2025 season for a discounted bundle price.

Mix and match at least four performances from any *Classical*, *Pops*, or *Film Series* and create your custom ISO season with a flexible Your Season, Your Way subscription. Enjoy single ticket choices with subscriber benefits!*

*Not applicable for special events



Subscribe Today!

IndySymphony.org/YSYW

317.639.4300

Curtis Bannister, Featured Artist



The 2021 recipient of the Actors Equity Foundation Roger Sturtevant Award and Drama League Award nominee (Florestan/“Fidelio”), **Curtis Bannister** has been praised by *TimeOut* magazine as “radiating with slowly simmering energy” and a

“quiet revelation” by the *L.A. Times* for his performances in theater, film, and opera.

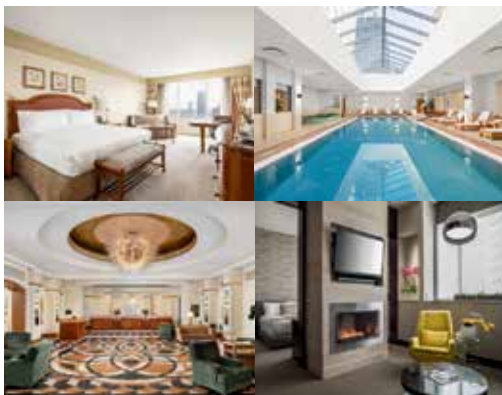
In 2024, Curtis debuted at Asolo Repertory Theatre to unanimous acclaim for his portrayals as Reverend Jeremiah Brown in the American classic *Inherit the Wind* and as George in the Lynn Nottage Pulitzer Prize winning play, *Intimate Apparel*, and Juror #8 in the world premiere production of the musical adaptation of *12 Angry Men*, following the sold-out run at Theater LatteDa in Minneapolis in 2022. Upcoming 2024–25 engagements include projects in Washington, D.C., Chicago, New York, and Florida.

Curtis debuted at The Kennedy Center as Soloist 1/Celebrant (cover) in Leonard Bernstein’s Mass for the Center’s 50th anniversary celebration with the National

Symphony and has performed, in concert, with the Cincinnati Symphony/Cincinnati Pops Orchestra’s Celebration Concert, Baltimore Symphony Orchestra, Chicago Symphony Orchestra, and The Philadelphia Orchestra in Bernstein’s *Candide* alongside Bradley Cooper and Carey Mulligan. Bannister has performed with Lyric Opera of Chicago, St. Petersburg Opera, Atlanta Opera, The Philadelphia Orchestra, Baltimore Symphony Orchestra, Chicago Symphony Orchestra, Heartbeat Opera, Chicago Opera Theatre, and Utah Festival Opera. Previous theatrical role highlights include Enjolras/*Les Misérables*, Coalhouse Walker Jr/*Ragtime*, Sid Sorokin/*The Pajama Game*, Ragotski & Cacambo/*Candide*, Celebrant/Bernstein’s Mass, Sweeney Todd/*Sweeney Todd*, John/*Miss Saigon*, Jim/*Big River*, Man 1/*Songs for a New World*, Jim Conley/*Parade*, and Jamie/*The Last Five Years*.

Since September 2023, Curtis has been the concert partner of Grammy and Tony Award winner Heather Headley. Curtis made his debut at the Tribeca Film Festival in the feature film *The Conductor*, and can be seen as Marquis on season 2 of the Apple TV+ series, *Dickinson*. He also was seen as firefighter Reimers throughout season 6 of NBC’s *Chicago Fire*.

For more info visit www.thecurtisbannister.com | Instagram: @thee_cb | Twitter: @theecb



NEVER JUST STAY.

STAY INSPIRED.

Wake up in one of 247 stylish guestrooms and experience ultimate luxury in the heart of downtown Indianapolis. Connect with fine art, savor steakhouse fare at The Capital Grille and treat yourself to unparalleled relaxation at Conrad Spa.

CONRAD
INDIANAPOLIS



50 West Washington Street, Indianapolis, Indiana, 46204 | 317.713.5000 | ConradIndianapolis.com

Orcenith Smith, Cover Conductor



Cover Conductor **Orcenith Smith** has conducted the ISO numerous times, including *Yuletide Celebration*, *Discovery Concerts*, the *Family Series*, and *New Music* events.

As conductor of DePauw University Orchestra and Opera, he has taken the DePauw Chamber Symphony to Japan, Great Britain, Germany, Italy, Spain, France, and Austria. At DePauw Opera, he has conducted *Le Nozze di Figaro*, *Cendrillon*, *Little Women*,

Coronation of Poppea, and *Street Scene*. He was music director of the Chicago Youth Symphony, is conductor of the Philharmonic Orchestra of Indianapolis, and has conducted in the Musikverein in Vienna, the Köln Philharmonie, Brucknerhalle in Linz, and Meistersingerhalle in Nuremberg, Carnegie Recital Hall in New York, the Terrace Theatre at the Kennedy Center in Washington, D.C., and in Los Angeles, San Francisco, Denver, and Phoenix with his orchestras.

He has guest conducted the Seattle Symphony, the Oregon Symphony, Dayton Philharmonic, and Indiana orchestras in Lafayette, Terre Haute, Carmel, and the Orange County (CA) Philharmonic Society.

AES Indiana Yuletide Celebration Cast



Sherry Hong, praised for her “silken tone” by the *Chicago Tribune*, has performed as a member of the ISO’s first violin section since September 2007, and served as Acting Associate Principal Second Violin from February 2022 to July 2024.

During her tenure, she has been a featured soloist in *Yuletide Celebration*, subscription *Pops Series* concerts, *Symphony on the Prairie*, and has collaborated on numerous chamber music outreach programs. Hong has also served the organization off-stage in leadership and education settings—as a member of the Orchestra Committee, on the leadership committee of FORTE, the ISO’s young professionals organization, and as a coach for the *Side-by-Side* program for talented pre-professional students.

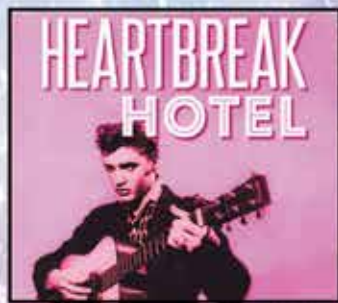
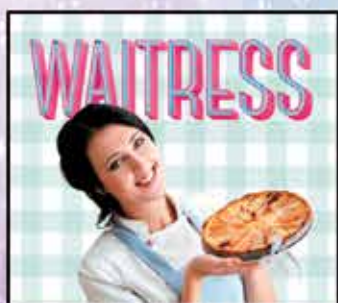
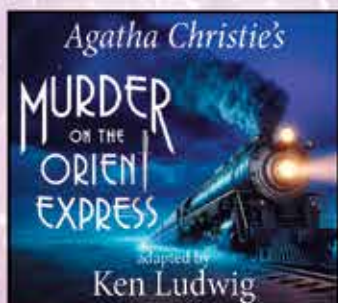
Away from the orchestra, Hong can be heard at the Indianapolis chapter of Classical Revolution at the Chatterbox Jazz Club and she has also performed on the Faculty Artist Series at the University of Indianapolis, as Guest Concertmaster with the Carmel Symphony Orchestra, and as a featured soloist with the Indianapolis Men’s Chorus. She can also be heard on multiple #1 iTunes singles in collaboration with Las Vegas performer and recording artist Frankie Moreno.

Hong was born in Taipei, Taiwan, and raised in the Chicago area, where she began playing the violin at age 3. She studied at the University of Michigan and La Schola Cantorum in Paris, France. She performs on a violin crafted by Camillo de Camille in 1734. In *Yuletide*, she performs on a Luis and Clark carbon fiber violin.

Season 2025

Tickets to all shows now on sale

new
shows!



2025 VIP Memberships now available.

Beef & Boards
DINNER THEATRE

beefandboards.com | 317.872.9664

AES Indiana Yuletide Celebration Cast



Susie Mosher is currently the host of the immensely popular weekly show *The Lineup with Susie Mosher*, live at the world-famous Birdland in New York City every Tuesday night. She has been performing professionally since she was sixteen years old and co-starred in the West Coast premiere of *Godspell* at The Old Globe Theater in San Diego. Throughout her long career, Susie has worked in night clubs, theater, television, and movies including the films *Lost Souls*, *View From The Top*, *It's Pat*, *The Wedding Planner*, *The Proposal*, and *Bear City 2*. Her television credits include *Beverly Hills 90210*, *Snoops*, *Veronica's Closet*, *If These Walls Could Talk 2*, *The L Word*, and *Nurse Jackie*. In 2007, Susie obtained her childhood dream of appearing on Broadway as Prudy Pingleton in *Hairspray* and stayed for the last two and a half years of the show's amazing six-year run. She was also in the Las Vegas company of *Hairspray* and has performed in numerous shows regionally and off-Broadway. She is thrilled to be back again with the Indianapolis Symphony Orchestra for the iconic AES Indiana Yuletide Celebration.



Nick Hodge is excited to return for his third AES Indiana Yuletide Celebration! Nick is a Cyr Wheel coach and performer who has worked nationally and internationally. Nick has performed for audiences of one to 20,000, has contributed to the IRV Cyr Wheel Competition Catalogue, and is recognized by companies such as Cirque du Soleil, Cirque Eloize, and The 7 Fingers. Nick has headlined Spiegelworld's show *Opium* at the Cosmopolitan of Las Vegas, the Minnesota State Fair Grandstand, Troupe Vertigo, and many symphony orchestras, and also during the San Antonio Spurs' NYE 2020 half-time show. Nick is also an accomplished Cyr Wheel competitor. He has won national titles, competed at the IRV Wheel Gymnastics World Championships, and currently acts as the Cyr Wheel Ambassador for Team USA.



Joe Martin, a lifelong Indiana native, is excited to be joining the Indianapolis Symphony Orchestra for the AES Indiana Yuletide Celebration for the first time this year. Joe has performed all over the country and the world as a member and featured soloist of the Purdue Varsity Glee Club. Notable performances include at Carnegie Hall with the New York Pops Orchestra under conductor Skitch Henderson, international tours to China, England, Ireland, and Scotland, a presidential inauguration, and as the "singing Santa" in 42 performances of the Purdue Christmas Show on the stage of Elliott Hall of Music both during and after attending college. Joe has also performed with The Voices in Franklin, Ind., and most recently as a member of the Indianapolis Men's Chorus. Joe's "day job" is with the National FFA Organization where he has the opportunity to help students across the nation develop their potential for premier leadership, personal growth, and career success through agricultural education. Joe would like to thank Greg for this opportunity and his friends and family for their support!

Make it a Happier, Healthier Holiday Season at the Monon Community Center!

Whether you're here to unwind after a long day, or train for your next marathon, the Monon Community Center has everything you need to achieve full mind-body wellness. Swim, run, bike, or stretch – there's something for everyone to enjoy!

An Monon Community Center membership includes:

- » 100+ Weekly Group Fitness Classes
- » Open Gym Pickleball and Basketball
- » Fitness Center
- » Sauna
- » Indoor Track
- » Indoor Lap and Activity Pools
- » Free Childcare

No fees to join or contracts. Memberships start at \$49 per month. Learn more at carmelclayparks.com or visit us in Carmel today.



Carmel • Clay
Parks & Recreation



carmelclayparks.com
1235 Central Park Dr East

INDIANAPOLIS SYMPHONY ORCHESTRA

UNCHARTED SERIES

FEBRUARY 19, 7:30 P.M.

BARTÓK × BJÖRK

APRIL 9, 7:30 P.M.

TCHAIKOVSKY
× DRAKE

FEATURING
STEVE
HACKMAN



Celebrating how the arts connect
and enrich our community.

**Citizens Energy Group is a proud sponsor
of the Indianapolis Symphony Orchestra.**

@CitizensEnergyGroup

CitizensEnergyGroup.com

This ad was not paid for by customer rates.

Expressenz

Expressenz Dance Center was founded in September 2008 by Director/Owner Karla Curatolo. Their mission since has been to enhance the love of dance for all individuals, regardless of ability, while providing quality training, structure, and cultivating expression to all who desire excellence in dance. Alumni from their program can be found in university dance programs across the country and dancing professionally in both company and commercial work. Expressenz was featured on Season 2 of the hit NBC television show *World of Dance* produced by Jennifer Lopez. Expressenz was recently named Studio of the Year 2024 by The Dance Awards. They are excited to be a part of AES Indiana *Yuletide Celebration* and the effervescent dance community in Indianapolis.



Julia Bailey



Caroline Durbin



Olivia Elliott



Lynsey Foertsch



Sydney Foertsch



Keira Himes



Aly Melliere



Kathryn Roth



Aliya Warren



AES Indiana *Yuletide Celebration* Cast



Alexa Abbott



Isabella Agresta



Dan Allis



Ian Black



Chloe Boelter



Shannon Christie



Joel Flynn



Sawyer Harvey



Michael Humphrey



Delaney Jackson



Kristan Jackson



Hannah Jew



Elly Kauser



Doug King



Danny Kingston



Alie Kryder



Jameelah Leandra



Amanda McCarthy



Charlie Metzger



Christina Nicastro



Jared Norman



Amy Owens



Phoebe Owens



Joseph Perkins, Jr.



Natalie Renee



Allen Sledge



Mallorie Singh



Annie Smith



Katie Scarlett Swaney



Sarah Tewes



Madeleine Trent



Thatcher Trent

AES Indiana *Yuletide Celebration* Cast



Logan Webber



J Tyler Whitmer



Chris Wiper



Addison Yanney



Erin Yanney



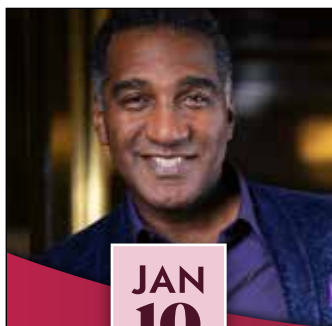
BEYOND BARRIERS

Barriers to care are not always obvious. Learn more or join the movement at EskenaziHealthFoundation.org.

ESKENAZI HEALTH
FOUNDATION



Donate Today



JAN
10
-
11

AN EVENING
WITH
NORM LEWIS



FEB
07
-
08

SHE'S GOT
SOUL ft.
CAPATHIA
JENKINS



MAR
14
-
15

PINK MARTINI ft.
CHINA FORBES: 30TH
ANNIVERSARY
TOUR

INDIANAPOLIS SYMPHONY ORCHESTRA

PRINTING PARTNERS POPS SERIES



GROUP SALES TICKETS NOW AVAILABLE

Bring your group to hear the Indianapolis Symphony Orchestra and receive a **10% discount** on your order!

For Pops, Classical, and Film concerts at Hilbert Circle Theatre, order 10 tickets or more.

Requires 10% down payment

For Special Events, including AES Indiana Yuletide Celebration, order 20 tickets or more.

Requires 20% down payment

For Kroger Symphony on the Prairie, order 30 tickets or more.

Requires 30% down payment

Group discounts do not apply to Hilbert Circle Theatre rentals or to Opening Night Gala.

For more information, email groups@indianapolissymphony.org.

24/25

S E A S O N



JANUARY 10-11
**AN EVENING
WITH NORM
LEWIS**



FEBRUARY 19
UNCHARTED
SERIES
**BARTÓK
X BJÖRK**



FEBRUARY 21-23
**STAR WARS:
A NEW HOPE
IN CONCERT**



MARCH 6-8
**KEVIN LIN
PLAYS MOZART**



MARCH 28-29
SWAN LAKE

CLOWES MEMORIAL HALL



INDIANAPOLIS
BALLET



APRIL 12-13
**BACK TO
THE FUTURE
IN CONCERT**

UNIVERSAL
AMERICA
THEATERS
PRESENTS

Subscribe for
the lowest prices.

AES Indiana Yuletide Celebration Cast

Alexa Abbott is thrilled to return to the Symphony's *Yuletide Celebration* for a 4th year, and can't wait to bring the magic to the stage. She received a BFA in Dance from BSU in 2021, and was most recently seen in *The Wizard of Oz* at Beef & Boards Dinner Theatre. Thanks to mom, dad, and all who love and support her.

Isabella Agresta is so excited to be performing in *Yuletide* for the first time! Isabella is an Indianapolis-based singer/actress and was most recently seen as Hodel in *Fiddler on the Roof* at Beef & Boards Dinner Theatre. Some of her other past credits include: *Anastasia* (Anya), *Heathers: The Musical* (Heather Chandler), *The Wedding Singer* (Dance Captain), and *ELF: The Musical* (Ensemble). She would like to thank her friends and family for their endless love and support!

Dan Allis began performing in *Yuletide Celebration* in 1988. Dan has been involved in puppetry from a young age. He served for 20 years as a puppeteer on *Time for Timothy*, a children's TV show in puppet drama format, which aired locally from 1957 to 1999. In addition to puppetry, Dan has worked behind the scenes at various local community theatres. Dan lives in Indianapolis with his husband of 31 years, his aunt, and their dog. He is a member of the management team at Fairway Village, a local nursing home specializing in memory care.

Ian Black is excited to be back with the *Yuletide* family for his fifth year! A Chicago native, Ian spent 11 years in full-time pastoral ministry (including six in Indy!) before shifting to his current life as a performer. Recent credits include: Billy in *42nd Street* and Frank Jr. in *Saturday Night Fever* at Moonlight Amphitheatre (where he also recently played in the pit orchestra for *School of Rock*), Henri Baurel in *An American in Paris* (B&B), Topher in *Cinderella* (Ramsey Theatre Co and Candlelight), Barry Mann in *Beautiful: The Carole King Musical* (Springer Opera House), Fyedka in *Fiddler on the Roof* (SDMT), joining this glorious symphony at *Symphony on the Prairie*, and several commercials across the country. He also teaches voice students virtually with Totty Studio. He thanks his friends/family, with special thanks to everyone at the ISO! Soli Deo Gloria.
@ianschublack

Chloe Boelter is a lyric soprano who is adaptive and virtuosic, recognized for her "free and easy stage presence" and versatility among opera, jazz, and working with living composers. She received her master's in voice from Indiana University in 2020 and her BM from Butler University in 2017. This is Chloe's third year joining the *Yuletide Celebration*. After winning the Kentucky Bach Choir Vocal Competition, the award granted her the position of guest soprano for their winter performance of Bach's *Christmas Oratorio* last season. Other recent awards include two consecutive Encouragement Awards from the Metropolitan Opera Competition. Chloe most recently performed as Belinda from *Dido and Aeneas* with the Indianapolis Baroque Orchestra, and covered the lead of Konstanze in *The Abduction from the Seraglio* with Festival Napa Valley. Chloe lives in Indy with her husband, Nick, and their pets, Hildy, Devlyn, and Nefertiti. Website: chloeboelter.com IG: @chloeboelter

Shannon Paige Christie is thrilled to be making her *Yuletide* debut. Recently, she appeared as Fiordiligi (*Così fan tutte*) with Crested Butte Music Festival and covered roles including Countess (*Le Nozze di Figaro*) and Susannah (*Susannah*) with Opera Fort Collins. Shannon made her professional debut in 2017 as Annina (*La Traviata*) during her time as a Resident Artist with Indianapolis Opera. Other recent credits include Violetta (*La Traviata*), Mrs. Hayes (*Susannah*), Papagena (*Die Zauberflöte*), Poppea (*Agrippina*), and Second Woman (*Dido and Aeneas*).

AES Indiana *Yuletide Celebration* Cast

Significant concert highlights include soprano soloist in Mozart's Requiem, Beethoven's C Major Mass, Handel's *Messiah*, Vaughan Williams' *Serenade to Music*, and Vivaldi's Gloria. Recently, Shannon has returned to her hometown of Indianapolis upon earning her master's of music from the University of Colorado–Boulder. She holds her bachelor's of music from the University of Indianapolis, where she studied with Dr. Kathleen Hacker.

Joel Flynn, an Indianapolis native, is so excited to return to the stage for his fifth *Yuletide Celebration!* Favorite credits include *Anything Goes in Concert* (Indianapolis Symphony Orchestra), *Hairspray in Concert* (Baltimore Symphony Orchestra), *The Music Man* (Cincinnati Pops) and *Mary Poppins* (Lexington Theatre Company). Joel has also choreographed for theatre and show choir programs around the Indianapolis area. He currently is the Synergy Performance Company and Competition Director at Wishes Dance Studio in Fishers. Love and thanks to Mom, Dad, Josh, Kellie, and Alex.

Sawyer Harvey is from the southside of Indianapolis and is excited to be back at the Hilbert Circle Theatre for his fifth year of *Yuletide Celebration!* He would like to shout out the mentors and teachers along the way, supportive parents, and patrons of the performing arts!

Michael Humphrey is a professional dancer/choreographer with a dance degree from Ball State University. Michael was part of the Ball State Dance Theatre, which he was a member for five years, as well as the Ball State University Code Red Dance Team. Since college, Michael has worked in Los Angeles as a dancer for a Snoop Dogg/Carl Thomas video, as well as playing an intern on ABC's *Grey's Anatomy*. He also works with Indiana Pacemates in performances as well as the Indianapolis Colts Cheerleaders. He is the Dance Director at Lawrence North High School, giving back to his alma mater! He is also the Head Dance Team Coach at Brebeuf Jesuit Preparatory School where they are nine-time IHSDTA AA Jazz Champions. He is THRILLED to be back on the ISO stage and hopes you enjoy the magic of the *Yuletide Celebration!*

Delaney Jackson is thrilled to be part of *Yuletide Celebration* for the second time! She grew up attending *Yuletide* annually and she is honored to be part of the cast again this year. Recent regional credits: Classic Theatre of Maryland (*Crazy for You*), Suncoast Broadway (*Cats*, *Escape to Margaritaville*), Riverside Center (*42nd Street*), Cumberland County Playhouse (*Johnny and the Devil's Box*, *Cinderella*, etc.). Delaney graduated from the Belmont University School of Music where she earned her BFA in Musical Theatre. She is forever grateful for the support of her community! Follow her adventures on Instagram at @delaneyjackson or at www.delaneyjackson.com

Kristan Jackson is an alumna of Trinity Laban Music and Dance Conservatory, UK, and has performed professionally both nationally and internationally. She's danced as a company member of Union Dance Company-UK; Canta Brasil-Porto Alegre, Brazil; Syncopated City Dance Company-NY; and Chester Whitmore and His Opus One Orchestra-Los Angeles, CA. Favorite stage and film credits include *La La Land*, Damien Chazelle; *Love, Loss, and Laughter: The Story of Jazz*, Lincoln Center with Wynton Marsalis and Jon Batiste; *Frankie Manning Centennial*, Apollo Theatre, NY; *Empty Sky the Rising*, NJ; and *Fashion Dance on Film*, Ellie Maltby, UK. Kristan is also a voice actor and can be heard voicing narrations in corporate and eLearning training, audiobooks, commercials, and phone messaging systems. Kristan is delighted to return to the ISO stage for *Yuletide!* Special thanks and love to my parents, grandmother, and the rest of my supportive family and friends.

SUPPORT THE
METROPOLITAN YOUTH ORCHESTRA



Winter Concert

January 26, 3:00 p.m.
Hilbert Circle Theatre

Spring Concert

May 4, 3:00 p.m.
Hilbert Circle Theatre

SCAN TO
LEARN MORE!



HANDEL'S MESSIAH

PRESENTED BY  telamon



December 19 | 7:30 P.M.

Join the Indianapolis Symphony Orchestra and the Indianapolis Symphonic Choir for one unforgettable performance of Handel's *Messiah*. Under the expert direction of ISC Music Director Eric Stark, immerse yourself in the majesty and spiritual depth of this timeless masterpiece. From the sweeping melodies to the triumphant "Hallelujah" chorus, celebrate the season through Handel's powerful expression of faith and joy.

ALLIED SOLUTIONS CENTER FOR THE PERFORMING ARTS

AES Indiana *Yuletide Celebration* Cast

Hannah Jew is a NYC-based dancer, choreographer and dance educator originally from Oklahoma City, OK. Her favorite recent credits include: Eliza/Dance Captain (Beef & Boards Dinner Theatre: *The King and I*), *The King and I* (National Tour), choreographer: re-creation of the Chinese Diver-tissement (now called Ribbon Dance) for Oklahoma Festival Ballet's *The Nutcracker* (The Uni-versity of Oklahoma), and choreographer/dancer in collaboration with Chengjin Koh & Verona Quartet (Smithsonian's National Museum of Asian Art—Washington, D.C.). Hannah has danced with Oklahoma City Ballet, Dayton Ballet, Ballet Hispánico's BHDos, and Nai-Ni Chen Dance Company. She is a graduate of The University of Oklahoma with a BFA in Ballet Performance. Special thank you to Suffolk for providing her with her pointe shoes. Gratitude to Jennifer Ladner for inviting her to be a part of *Yuletide!* Hannah wishes everyone a wonderful holiday season filled with joy and beautiful memories!

Elly Kauser is thrilled to be back at the Hilbert Circle Theatre for her second *Yuletide Celebration!* Elly graduated with a BFA in Dance from Wright State University in Dayton, Ohio. Some of her favorite credits include *No, No Nanette!* (WSU), *Crazy For You* (WSU), *Beauty and the Beast* (La Comedia Dinner Theatre), *Fiddler on the Roof* (WSU), and "Eve" in *Awaited* (Crossroads Church—Mason). Elly is also a company member of Crossroads Dance Indy. She would like to thank her husband, Joe, and family for their love throughout her journey to returning to the stage

Doug King is an Indianapolis director, choreographer, and equity actor. This is Doug's sixth *Yule-tide*. He recently directed and choreographed his twelfth production of *Joseph and the Amazing Technicolor Dreamcoat*. He also was part of the national tour with Donny Osmond. On stage, Doug primarily works locally at Beef & Boards Dinner Theatre and as been in more than 100 produc-tions. Some of his credits include: Will Parker in *Oklahoma!*; The Scarecrow in *Wizard of Oz*; Frank Shultz in *Show Boat*; Cosmo Brown in *Singin' in the Rain*; and Joy in *Cinderella*. Additional credits include multiple runs of *South Pacific*, *Seven Brides for Seven Brothers*, and *42nd Street*. Aside from *Yuletide Celebration* Doug has also danced with Indianapolis Ballet Theatre and Gregory Hancock Dance Theatre. He is on the dance faculty at Anderson University teaching tap, jazz, and musical theatre. Doug works with numerous high schools and universities with their choral and theatre departments.

Danny Kingston graduated from the American Musical and Dramatics Academy (NYC) and is a local professional performer. This year marks Danny's eleventh *Yuletide Celebration!* Other Symphony concerts include *South Pacific in Concert*, *Hello, Dolly!*, *Hairspray*, *Anything Goes*, and *Kander & Ebb, On Broadway*. Danny is a proud member of the Indianapolis Men's Chorus and a regular performer at Beef & Boards Dinner Theatre. Special thanks to the amazing cast and crew, and to the one and only Sandi Patty!

Alie Kryder, an Indiana native, is beyond excited to join the 2024 *Yuletide* team! Back home, she trained with The Dance Refinery and Center Grove Choirs, and in 2022, she graduated from California's Chapman University with degrees in BFA Dance Performance, BA Psychology, and a Musical Theatre minor. Represented by Go2Talent, and residing in both the Big Apple and Sun-shine State, she is further pursuing her performing career. At Chapman, she was a leader in many dance organizations, including the Dance Team (14x national champions), and served as president of Chapman Dance Alliance. Alie has performed at the ISO, Steps on Broadway, Core Training Techniques, The Storyteller's Intensives, Tremaine Dance, and both performed and choreographed

for numerous collegiate productions. She has trained with many professional choreographers including Marinda Davis, Traci Reszetylo, Emily Zachary, Lloyd Culbreath, Alicia Guy, Steven Sofia, Wilson Mendieta, Ido Tadmor, Derrick Schrader, the TDR staff, and more. Alie would like to thank her family and mentors! aliekryder.com

Jameelah Leandra is delighted to make her *Yuletide* debut! Favorite Credits: *Cinderella* (Ella), Princess Tiana (Shanghai Disney), *Beauty & the Beast* (Belle), *The Little Mermaid* (Ariel), and *AIDA* (Aida). She would like to thank God, her Mom, Dad cheering his baby girl on from above, and Yuri Lee for their constant love and support! @lovely.leandra on IG/TikTok/FB/YouTube

Amanda McCarthy is excited to be performing in her 10th year of *Yuletide*! Favorite credits include: *Joseph and the Amazing Technicolored Dream Coat*, *Million Dollar Quartet*, and *Seven Brides for Seven Brothers*. She graduated in 2014 with a degree in Voice Performance and since moving to Indianapolis, she has been recording demos for print music publishing and is a lifestyle model across the Midwest. All my love to Sean and Arlo!

Charlie Metzger is thrilled to be back for his ninth AES Indiana *Yuletide Celebration*! Past credits include *Cirque de la Symphonie Goes Broadway!* with the ISO, and Juan in *Man of La Mancha* with the Indianapolis Opera. He holds a bachelor's degree in Vocal Performance from the Jacobs School of Music at Indiana University. Charlie lives in Avon with his wife Darlene, son Chaz, and daughter Sylvia. www.charliemetzger.com.

Indianapolis-based soprano **Christina Nicastro** began singing at a young age while growing up in her hometown of Dunellen, New Jersey. She attended William Paterson University, where she earned her bachelor's degree in Voice Performance. She made her role debut as Pamina in *The Magic Flute* while at the university. Christina received her master's degree in Voice Performance from Indiana University's Jacobs School of Music, where she studied with the legendary soprano Carol Vaness. While there, she performed the role of Ellen Orford in Benjamin Britten's *Peter Grimes*. Other notable performances at Indiana University include soloist roles in Honegger's *King David* and Haydn's *Lord Nelson Mass*. Now residing in Indianapolis, Christina has performed with the Indianapolis Symphony Orchestra as a featured soloist in their Pops series concerts *Cirque Goes to the Movies* and *Broadway Under the Stars*, under the baton of Maestro Jack Everly. She has also been featured in the Symphony's *Yuletide Celebration* in 2018 and is back for her sixth year. In addition, she represented the ISO at the Indianapolis Motor Speedway, singing the National Anthem at the Gallagher Grand Prix in 2023. Nicastro has returned on multiple occasions as the soprano soloist with the Choral Art Society of New Jersey, most recently performing Haydn's *Lord Nelson Mass*. Her latest credits include appearances as a guest soloist with the Ronen Chamber Ensemble and the Indianapolis Men's Chorus. You can hear her on Apple Music, performing the songs of composer Martin Sędek in *Art Songs Vol. 1*.

Jared Norman is excited to join the cast of *Yuletide* for the first time. He is in his thirteenth year of choral directing at Center Grove High School in Greenwood, Ind. Additionally, he is a private vocal instructor and freelance choreographer. He most recently was in the ensemble for the ISO's production of *South Pacific in Concert*. He hopes that everyone has a wonderful holiday season and enjoys the show!

AES Indiana *Yuletide Celebration* Cast

Amy Owens' national tour credits include Monty Python's *Spamalot* and *Jubilee!* in Las Vegas. Regional productions include *Cats*, *Cabaret*, *Chicago*, *Joseph*, *Sister Act*, *South Pacific*, *Dreamgirls*, *The Addams Family*, and *The Little Mermaid*. Amy has performed in numerous Pops concerts with the Indianapolis, Baltimore, Jacksonville, and Raleigh Symphony Orchestras. Amy spent five wonderful holiday seasons as a Rockette in the *Radio City Christmas Spectacular* and is also the former Face of MyINDY-TV (2013–2015). In 2012 she was part of the Super Bowl halftime show featuring Madonna. Other credits include *Cabaret* at Chicago's Paramount Theatre and *Chicago the Musical* at Chicago's Drury Lane Theatre. Represented by Helen Wells Agency and Heyman Talent, she has been seen in numerous regional and national commercial and print ads. Love to Kris and our little loves Phoebe and August. www.amyowens.biz.

Phoebe Owens is excited to be joining the *Yuletide* cast, following in her big brother's footsteps. She is 6 years old and in kindergarten. She was last seen on stage in *The King and I* and *Joseph* at Beef and Boards Dinner Theatre. She has been in several print and commercial ads including Indiana Member's Credit Union, Delta, and Broyhill. Love to mom, dad, and August!

Joyeux Noel! **Joseph Perkins, Jr.**, is festively celebrating 13 years of performance with the Indianapolis Symphony Orchestra and the AES Indiana *Yuletide Celebration*. Other symphonic credits include: *Ashley Brown's Broadway*, world premieres of *Hello, Dolly! In Concert*, *On Broadway with Kander & Ebb*, *Anything Goes*, and *Hairspray in Concert!* with both the Indianapolis and Baltimore Symphony Orchestras. As a featured vocalist and dancer, Joseph has performed with the Fort Worth and Dallas Symphonies, and appeared as a guest artist with the Naples Philharmonic. An Indianapolis native, Joseph was most recently seen on stage with ISO in *South Pacific in Concert*, and can also be seen as a performer with the Indianapolis Men's Chorus. Shoutout to "The Voice," Ms. Sandi Patty, for always sharing and sending your beautiful music, performance, love, and wisdom over our *Yuletide* journey! Special thanks to all my family and friends for all their constant love and support. Instagram: @ubetrgojoe

Natalie Renee is excited to be back for year eight with the ISO for *Yuletide!* And what a bonus that she gets to share the stage with her cousin, Joseph Perkins, Jr.! She has performed with several symphonies around the country, including the Baltimore Symphony Orchestra and the Indianapolis Symphony Orchestra in their productions of *Hairspray In Concert!* with John Waters and in select post-show concerts with *Divas of Song*. She recently played the Voice of Audrey II in *Little Shop of Horrors* (Mason Street Warehouse) and has been seen as Deloris Van Cartier in *Sister Act* (Arts Center of Coastal Carolina). Other credits include *Hairspray* (Cindy, Pearl, Dynamite) and *Rent* ("Seasons of Love" soloist) national and international tours, and *The Drowsy Chaperone* as Trix (St. Michael's and Gateway Playhouses). Natalie is also an ordained UCC minister who works with extracanonical texts. She has recorded an EP of her original music that uses The Odes of Solomon as text. The album, *Songs of Your Truth*, is available on any digital platform. She also co-authored a book, *In Trembling Boldness: Wisdom for Today from Ancient Jesus People*, which is now available. You can follow her and her work on Instagram: @divadoesdivinity, X: @divadoesdiviniT, or on Facebook: Diva Does Divinity. Love to her family and thanks to Josh! Proud member of AEA. John 14:20

Merry Christmas



From festive greens to any hue you need.
Let us bring your ideas to life this season!



PRINTING PARTNERS.NET

317-635-2282 • 929 West 16th Street • Indianapolis, IN 46202

• UV Offset Printing • Digital Printing • Mailing • Signs • Promo Products • Publishing • Packaging • Puzzles & Games •

AES Indiana *Yuletide Celebration* Cast

Allen Sledge is excited to be part of *Yuletide* with the ISO for the first time. He is a local actor and singer whose recent credits include Uncle Henry in *The Wizard of Oz* (Beef & Boards Dinner Theatre), the voice of Audrey II in *Little Shop of Horrors* (Indiana Repertory Theatre), and Coalhouse Walker Jr. in *Ragtime* (Footlite Musicals). He has vocal training in a variety of styles, including musical theatre, jazz, and classical. Allen trained at the Chicago College of Performing Arts and worked with talented coaches in New York, Chicago, and Indianapolis. He sends his sincere thanks to the team at the ISO for inviting him to join this cherished tradition. <3 Brandon. Merry Christmas!

A passionate performer, **Mallorie Singh** holds a BFA in Dance Performance from Ball State University and has spent many years sharing her talents on the worship team. This year marks her sixth *Yuletide Celebration*, and she is excited to continue the tradition of spreading holiday joy. Outside of performance, she works in the beauty industry as Director of Operations and Marketing at Tyler Mason Salon & Spa. She is grateful for the opportunity to contribute to this festive season through music and community.

Annie Smith is thrilled to be part of the *Yuletide Celebration* for the first time! Having grown up attending *Yuletide*, she is honored to be part of the cast this year. Annie graduated from Anderson University, where she earned her BA in Elementary Education and Dance Pedagogy, along with a minor in Special Education. She is very thankful for all the experiences and performances that Anderson University provided her. Currently, Annie is a second-grade teacher and also teaches dance classes at Anderson Young Ballet Theater. She is forever grateful for her amazing family and community, who always support her!

Katie Scarlett Swaney is thrilled to be back for her fourth *Yuletide* with the Indianapolis Symphony Orchestra! She graduated from Indiana University with a BFA in musical theatre and a minor in arts management. She has performed as a featured artist with the ISO in multiple concerts including *A Sondheim Celebration* and *Broadway Under the Stars*. Regional credits include: Arizona Broadway Theatre, *A Gentleman's Guide to Love and Murder* (Phoebe) | The Palace Theatre, *Joseph and the Amazing Technicolor Dreamcoat* (Featured Ensemble) | The Argyle Theatre, *West Side Story* (Graziella) | Bigfork Summer Playhouse, *Bonnie and Clyde* (Bonnie) | Constellation Stage and Screen, *Newsies* (Katherine/Dance Captain). Katie would like to thank her family for their support! | www.katiescarlettswaney.com |

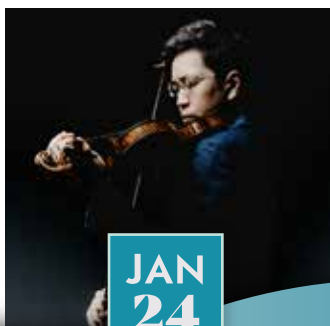
Sarah Tewes is a Butler University alumna and an Indianapolis local. She is thrilled to return for her third year of *Yuletide*. She was most recently seen in *Bowie Forever!* with Strive Dance Company. Her other favorite credits include Kristine (*A Chorus Line*), ChaCha (*Grease*), and ensemble/tap-dancing egg (*Something Rotten*). Additionally, she shares her love for dance by choreographing musicals and summer camps around the central Indiana area. Most recently she choreographed for Herron High School's fall musical and continued to serve as an assistant choreographer for Mt. Vernon High School. She thanks her parents for all of their love and endless support.

Madeleine Trent is so excited to be a part of *Yuletide Celebration* for the first time. She loves gymnastics and also enjoys singing, dancing, and reading. Madeleine lives in Indianapolis and is in second grade. She is looking forward to being in *Yuletide* with her "Nani."



JAN
16
-
18

JUN MÄRKL
CONDUCTS
BEETHOVEN'S 7TH



JAN
24
-
25

THE CONCERTO:
BARBER, BARTÓK
AND FRANK



JAN
31
-
FEB
01

BEETHOVEN
AND
DVOŘÁK



Health Plans

CLASSICAL SERIES

INDIANAPOLIS SYMPHONY ORCHESTRA



TEDDY BEAR
CONCERT SERIES

INDIANAPOLIS SYMPHONY ORCHESTRA

The Teddy Bear Series presents **five different original stories** written by ISO violinist Victoria Kintner Griswold. Each one introduces young children (ages 3–6) to the instruments of the orchestra through story, movement, and live music. Concerts take place at area libraries and registration may be required.

IndianapolisSymphony.org/teddy-bear



UPCOMING PERFORMANCES

The Runaway Strings

January 11, 11 a.m.
Indianapolis Public Library
Fort Ben Branch

The Big Note

February 8, 11 a.m.
Central Library
Clowes Auditorium

The Garden Symphony

January 18, 10 a.m.
Plainfield-Guifford Township
Public Library

The Giant's Violin

March 8, 11 a.m.
Indianapolis Public Library
Eagle Branch

Title Sponsor:



Premier Sponsors:



Associate Sponsor:



AES Indiana *Yuletide Celebration* Cast

Thatcher Trent is excited to be making his *Yuletide Celebration* debut this year. Thatcher is in fifth grade and lives in Indianapolis with his family. He enjoys music, art, and swimming. Thatcher is also preparing to be the role of Simba in his school's production of *The Lion King, Jr.* this coming spring. Thatcher is grateful to be sharing the stage with his "Nani" during her final year as *Yuletide* host.

Logan Webber, a Colorado native based in North Carolina, is overjoyed to be performing in his third *Yuletide!* Logan has performed with other companies such as Hawaii Opera Theatre, Opera Carolina, Virginia Opera, Opera Orlando, Charlottesville Opera, The Princeton Festival, Chautauqua Opera, Piedmont Opera, Pacific Opera Project, Amelia Island Opera, The Richmond Symphony and more. He also serves as the Communications Manager for Opera Carolina and The Smith in Lexington, NC. Logan holds degrees from UNCSA and UMD at College Park. He is incredibly thankful and grateful for his amazing, supportive, and wonderful mother, Suzie!

J Tyler Whitmer returns for his fifth holiday season with the ISO! As a Butler graduate, he always loves having a reason to spend some time in Indy. Select Theatre Credits: The Guthrie Theatre, Lyric Opera of Chicago, Marriott Theatre Lincolnshire, Paramount Theatre, Mercury Theatre Chicago, Victory Gardens Theatre, Mason Street Warehouse. Next up: *Joseph and the Amazing Technicolor Dreamcoat* at Marriott Theatre in Lincolnshire. AEA. Gray Talent Group. For Sadie, Leighton, J Truitt, Eleanor, Jane, Johnny, and Meredith. Happy Holidays!

Chris Wiper is a pop vocalist, songwriter, producer, and recording artist from Nashville, Tenn. Since completing his degree in voice and music business at Belmont University in December of 2022, he has been performing as a lead singer with various bands and vocal groups in Nashville and around the country, all while continuing to write and record his own original music. This is his first year with *Yuletide Celebration*; he is grateful for the opportunity to be a part of an incredible production.

This will be **Addison Yanney's** second *Yuletide*. She is a first grader in Carmel Schools. She loves to make people smile and laugh and enjoys dancing and Girl Scouts. Love to my Mom, Dad, and big sis, Cameron.

Erin Yanney is excited to be back on stage with the ISO. As an Indianapolis native, *Yuletide Celebration* has been a staple in her life for as long as she can remember. This will be Erin's tenth *Yuletide*. She is a member of Indianapolis Players Club and is a former Indiana Pacemate. She has many years of experience competing and coaching, but performing with the ISO is her favorite. She is grateful for the opportunity to perform amongst some of the most talented performers. This year is extra special as she takes the stage again with her youngest daughter, Addison. Love to my Mom, husband Scott, and oldest daughter, Cameron.



**We're in the
business of
creativity.**



Award-winning communications company
www.porchmarketing.com



Give the **GIFT**
of **READING**
& **MUSIC** to your
LOVED ONES

Enjoy the Indianapolis Symphony Orchestra's
Teddy Bear Series performances whenever you want!
Families can read the picture book together and listen
along with musical recordings played by ISO musicians.

BUY NOW AT:

IndianapolisSymphony.org/learn/kids-families

The Big Note
On Sale Now!

Written by ISO Violinist Victoria Kintner
Griswold & Illustrated by Sharon Vargo



FEB
21
7:00 PM

FEB
22
7:00 PM

FEB
23
2:00 PM



APR
12
7:00 PM

APR
13
2:00 PM

STAR WARS: A NEW HOPE IN CONCERT

BACK TO THE FUTURE IN CONCERT



FILM SERIES

Presented by:

BANK OF AMERICA



FORE!

THE ISO



Join us to support the many educational programs that the Indianapolis Symphony Orchestra provides. Enjoy an afternoon of golf, food, and music while supporting music education in Central Indiana.

May 8, 2025

3-6 pm

Registration opens at 2:30 p.m.

BACK 9 GOLF AND ENTERTAINMENT
1415 DROVER ST
INDIANAPOLIS, IN 46221



For more information, contact Maggie Leemhuis at **317-229-7094** or mleemhuis@indianapolissymphony.org

2024 AES Indiana *Yuletide Celebration* Highlights

❄️ **The celebration of Sandi Patty's 10th year as *Yuletide Celebration* host!**
The ISO is excited to welcome back the incomparable Sandi Patty as the 2024 host of AES Indiana *Yuletide Celebration*! Sandi last hosted *Yuletide* in 2021 and has hosted *Yuletide* more times than anyone else.

❄️ **Spinning sensation of Nick Hodge**
Back by popular demand! Nick Hodge returns for a new synchronized pixel light show that will delight and awe. As a performer with Troupe Vertigo, he brings his award-winning talent on the Cyr Wheel—a large ring made of aluminum or steel—back to *Yuletide*.

❄️ **Introducing Peppermint Parade**
The Holly Jolly Dollies introduce us to their new whimsical friends from Toy Land in this new *Yuletide Celebration* dance feature.

❄️ **The return of a tribute to *White Christmas***
Cozy up with a tribute to Irving Berlin's holiday classic *White Christmas*, featuring songs you know and love. Enjoy a trip down memory lane featuring our cast of talented singers and dancers.

❄️ **Merry & bright Mistletoe Mixtape**
A new medley featuring contemporary holiday hits by artists such as Taylor Swift, the Jonas Brothers, and more. Celebrate the season with this musical journey through a winter wonderland.

❄️ **An Ode to Online Shopping**
Searching for that perfect holiday gift? It should be easy, right? *Yuletide Celebration* tackles the humorous challenges of online shopping.

❄️ **Majestic music performed by the ISO**
From classical to contemporary to new works composed by Maestro Everly, our Indianapolis Symphony Orchestra is able to handle all styles of music in *Yuletide Celebration*. Their talents and musicianship create the *Yuletide* magic.



Clare Henkel's 2010 costume sketch for the ensemble in *White Christmas*.



Christmas IN THE Wings

A backstage look at assembling
AES Indiana Yuletide Celebration

Thirty-six people, twelve box truck loads, and five full days of nonstop work is the recipe to make the visual magic of AES Indiana *Yuletide Celebration* come to life on the Hilbert Circle Theatre stage. But that's not even the true beginning. Before the *Yuletide Celebration* set can be assembled on stage, everything else has to be cleared out. The ISO has four full-time stagehands including Stage Manager Kit Williams, Sound Technician and Co-Yuletide Production Sound Designer Alan Alford, Production Electrician Steve Martin, and Video Technician Patrick Feeny, and they spend days putting away lights, screens, doors, and

even the clouds above the stage that assist with the balance of sound. Everything is emptied out and ready. "When move-in day arrives," explains Kit, "It's all about knowing what needs to be done first and getting things accomplished in a very specific order."

The truckloads began to arrive at Hilbert early on November 18, full of stage pieces, flooring, the portal, props, lobby decorations, and more, all stored at an offsite warehouse the rest of the year. It's a beehive of activity on the stage, backstage, downstairs, and in the lobby. The flooring is assembled, and carpenters and

ABOVE PHOTO FROM LEFT TO RIGHT:

KIT WILLIAMS, STAGE MANAGER

TOM ORTMAN, HEAD CARPENTER

KYLE COCHRAN, ASSISTANT PRODUCTION ELECTRICIAN

DAVE ROBIE, PROPERTY MASTER

electricians and stagehands begin the tedious process of assembling all parts of the set including the proscenium, the shell on stage, the lighting bars that are hung above the stage, sound and video equipment, and so much more.

Many tasks have to wait until others have been completed. “The Friday after Thanksgiving, after the stage is assembled and lights have been focused, there are 8 of us who work for about four hours just on the stage setting up chairs, music stands, stand lights, and microphones and wiring everything up,” says Alan.

Work continues over the Thanksgiving weekend as lighting designer Stuart Duke, lighting programmer Topher Stumreiter, associate lighting designer Travis McHale, and sound designer Matt Kraus all arrive in Indianapolis to work with the ISO stagehands. They have been working remotely on creating the show for months, but this is the time to see it finally their plans and work come to life. By the time the technical dress rehearsal happens on Tuesday night, just four days before the opening night, thousands of hours of planning, prep, and manual labor have been logged by the stagehands and the production staff throughout the whole year.

When the curtain rises on opening night and the gowns sparkle on stage and the sound of music fills the theatre, the work for the stagehands settles into a more predictable schedule. “During a show, I’m responsible for all the audio and video playback and recordings,” explains Patrick, who works in a video room away from the stage with dozens of screens. He



STEVE MARTIN, PRODUCTION ELECTRICIAN

takes cues from the production stage manager Ken Saltzman. Ken spends the show at the lighting booth in the balcony, giving directions to stage managers, sound, lighting, and more. Steve sits just a few feet away, controlling more than 250 lighting cues per show and working with a deck electrician. “I’ve worked with visual lighting plots and spent days working with Stuart, Travis, and Topher to make sure everything is programmed correctly and I can just click the ‘go’ button for the next cue,” says Steve. “I think I’ve hit ‘go’ more than 100,000 times during my 16 years of working *Yuletide Celebration*,” he adds with a laugh.

Alan sits at the audio console on the main floor, listening and adjusting the sound throughout the show, and staying in communication with his audio assistants. There are more than 110 audio input sources that he can control, ranging from microphones on the stage, on the performers, and some even built into the set. “It’s an ebb and flow of the ensemble and how we have to balance individual voices,” says Alan.

Kit spends each show near stage right, where he can quickly troubleshoot any issue that may arise. He manages the needs of not only the entire production, but of the musicians as

PATRICK FEENEY, VIDEO TECHNICIAN





5 DAYS
4 ISO STAGEHANDS
32 ADDITIONAL STAGEHANDS
12 TRUCKLOADS
1,000s OF LABOR HOURS
110 AUDIO INPUTS
250 LIGHTING CUES
2 PIXEL LIGHT TREES
AND A PARTRIDGE IN A PEAR TREE

well. He also has built many of the props and equipment used on stage during a show, such as the ladders that became part of the train in *The Polar Express*, the kabuki drop used in the show last year for Toy Shop, and even the pixel tree being used in this year's show. "I love it when the Pops Department gives me an insane project to work on and I get to make it come to life," says Kit. "It's fun getting to work on challenging projects and getting the results they want."

When the show is over and the curtain is dropped, the stagehands still aren't finished. There are cast microphone systems to be gathered, props to be restaged, snow machines to be refilled, and lighting and video feeds checked and turned off. Not to mention cleaning the stage and sweeping away the endless amounts of glitter. But even in the midst of all the work, they all love and respect the show, the Pops Department, the talent, and the musicians.

"I like the little things about *Yuletide Celebration*, like seeing Santa's sleigh fly past the moon every night in *'Twas the Night Before Christmas*," says Patrick, "and seeing the new additions to the show that get made every year." All four stagehands enjoy working with the talented cast and guest hosts, especially when they get to see some of the same people year after year. "Our talent is spectacular," says Steve. "It's a lot of hard work, but it's great to be able to work with Jack Everly and Ty Johnson and it's cool to be a part of this. The show that everyone puts together is amazing. There's nothing like it."

ALAN ALFORD, SOUND TECHNICIAN,
CO-YULETIDE PRODUCTION SOUND DESIGNER





SILAC

INSURANCE COMPANY

EXPERIENCE, EXCELLENCE & INNOVATION SINCE 1935

Proud Patron of the Arts

SILAC® offers fixed annuity solutions designed to help you achieve your retirement goals.

SILAC annuities are products of the insurance industry and are not guaranteed by any bank, nor insured by FDIC or NCUA/NCUSIF. Past performance is not indicative of future results. May only be offered by a licensed insurance agent. Restrictions apply. For more information, please visit www.SILACins.com

AES Indiana *Yuletide Celebration* Production Staff

Matthew Creek

Company Manager

Topher Stumreiter

Lighting Programmer

Aaron Fuksa

Head Writer

Ty A. Johnson

Specialty Material Writer

Doug King

Assistant Choreographer

Kelsea Hankins

Production Associate

Claire Slaven, Jessica Rodgers

& Laura Wertz

Production Assistants

Joseph Perkins, Jr. &

Michael Humphrey

Dance Captains

Kit Williams, Alan Alford,

Patrick Feeney & Steve Martin

Stage Technicians

Steve Martin

Production Electrician

Daniel J. Allis

Puppeteer Coordinator

Alexa Abbott

Rehearsal Assistant

Joel Dearing

Pixel Programmer

Orcenith Smith

Standby Conductor

Derek McLane & Gregory Hill

Scenic Design

James Norman, Laura Cones,

Cynthia Stacy & Susan Grymonpré

Music Librarians

Anne Beck

Creative Assistant

Matt Richardson, Laura Brumbaugh

& Jared Dorotiak

Rehearsal Pianists

Camille Deering & Tony Sirk

Costume Associates

Stacy O'Leary

Wardrobe Supervision

Andrew Elliot

Wig Designer

Justin Stahl & Justin Nimmo

Lobby Organists

Mark Gilgallon & Ellen Kingston

Voiceover Artists

Chuck Daube & Kirsten Povolny

American Sign Language Interpreters

Edie McDonald

Audio Describer

IATSE, Local 30 – Stagehands; IATSE Local 893 – Wardrobe

Very Special Thanks

Demetria Page, Dr. Louise Tetrick, Troupe Vertigo, Jonas Productions, Mid-America Sound Corporation, Steve Potts, Steve Hanna, Conrad Indianapolis, Hyatt Place, Outdoor Lighting Perspectives, Karla Curatolo and the families of the Expressenz dancers, and Jeffery Crooks. Additional dance costumes built in New York City.

AES Indiana *Yuletide Celebration* Production Staff

Ty A. Johnson, *Executive Producer*, is proud to be producing *Yuletide Celebration* for its 38th year of creating unforgettable holiday magic for the Indianapolis community and beyond. In addition to his year-round *Yuletide* responsibilities, Ty is the producer of the Indianapolis Symphony Orchestra's Printing Partners *Pops Series* and the *Film Series* presented by Bank of America, notably brokering deals with major Hollywood film studios to successfully premiere the entirety of *Harry Potter: In Concert* series, the *Star Wars* trilogy, and the world premiere of *An American in Paris* as live films with orchestra. His countless theatrical concept productions have been in great demand and continue to be seen all over North America. Ty received his BA from Indiana University before completing his master's work at the University of Illinois. Prior to producing shows in orchestral settings, Ty worked in both not-for-profit and commercial theatre environments, including time at Disney and Paper Mill Playhouse where he served as the Associate General Manager. Ty would like to thank the musicians of the ISO for their collaborative spirit and their amazing world-class musicianship! He is looking forward to spending Christmas Eve with his husband and their 16-month-old Golden Retriever Roxie Noel. PS: And no, Ty never ever gets tired of Christmas music.

Anne Beck, *Creative Assistant*, directs, teaches, judges, and choreographs locally and globally. Performance credits with ISO include *Hairspray in Concert* (John Waters/Micky Dolenz), *Hello, Dolly! in Concert* (Gary Beach/Sandi Patty), *Guys and Dolls in Concert* (Hal Linden), *On Broadway with Kander and Ebb* (Beth Leavel), *Anything Goes in Concert* (Rachel York /Judy Kaye), and many of their touring Pops productions. This marks Anne's 19th year involved with *Yuletide Celebration*. Broadway/national credits include *Saturday Night Fever* (Original Broadway Cast), *The Who's Tommy* (Sally Simpson), *Cats* (Bombalurina), *A Chorus Line* (Cassie), *Gentlemen Prefer Blondes* (Barbara Eden), and *West Side Story* (Anita). Presently Anne is Associate Director at The Booth Tarkington Civic Theatre under Executive Director Michael Lasley, and is an Associate Teaching Professor at Ball State University in Theatre and Dance. She was the recipient of this year's Outstanding Teacher for the entire University. She feels blessed to do what she loves, is grateful for a loving husband and daughter who support her, and is thankful to audiences for supporting the arts. Thank you Jack, Ty, Jen, and Brandy for loving me and supporting me all these years.

Lina Benich, *Stage Manager*, is excited to be back for her splendid seventh year with *Yuletide Celebration!* She has previously worked with Paramount Theatre, American Players Theatre, Michigan Shakespeare Festival, Drury Lane Theatre, First Folio Theatre, Kokandy Productions, and A Crew of Patches Theatre Company. Lina is a proud AEA member and graduate of Emerson College. Much love to Mom & Dad.

Stuart Duke, *Lighting Designer*, has been a member of the *Yuletide* creative team for more than three decades. He served as resident lighting designer for Dance Kaleidoscope for ten years and received Indy's Corbin Patrick Award for his work at the Indiana Repertory Theatre where he designed over twenty productions. Recent designs include *Otello and Falstaff* for Maryland Lyric Opera, *Daughter of the Regiment* for Opera Orlando, and *The Tales of Hoffmann* for Palm Beach Opera. Other designs include *Orwell in America* Off-Broadway, *Fun Home* at Weston Playhouse, and *Matilda* at Walnut Street Theatre. In New York, Stuart has designed lighting for *The Rothschilds*, *Cast of Characters*, *Home Games*, *The Matchmaker*, *Broadway Jukebox*, *Frankie* (directed by George Abbott) and *jon & jen*. His regional credits include the world premiere of *The Night Seasons*, written and directed by Horton Foote, Kathleen Battle, and Grover Washington Jr. in concert at Carnegie Hall, a revival of *Rags* for the Paper Mill Playhouse, and Christopher Lloyd in *Death of a Salesman*. He has designed for Indianapolis Opera, Boston's Huntington Theatre,

AES Indiana *Yuletide Celebration* Production Staff

Portland Stage, McCarter Theatre, Goodspeed Musicals, Washington's Shakespeare and Studio Theatres, North Shore Music Theatre, and Opera Company of Philadelphia. He taught lighting design at Oberlin College and Washington College and has been a frequent presenter for the Kennedy Center American College Theatre Festival.

Aaron Fuksa, *Head Writer*. Writing credits include ISO's *Yuletide Celebration*, Playbill's *'Twas the Night Before the Tonys*, and *Playbill—the Game Show*, *Sandi Patty's Very Merry Virtual Christmas*, and *2Scoops Live*. Performance credits include Baltimore Symphony Orchestra's *Hairspray in Concert*, Indianapolis, Seattle, and Oregon Symphonies *Yuletide Celebration* as Santa, and the national tours of *Jesus Christ Superstar* and *The Best Little Whorehouse in Texas*.

www.aaronfuksa.com

Clare Henkel, *Costume Designer*, has designed the costumes for the AES Indiana *Yuletide Celebration* for the past 22 years. She also designed the Symphonic Pops Consortium's *Leading Men of Broadway*, *Cirque Goes to the Movies*, *Broadway Cirque*, *Classic FM*, *Broadway Divas*, *Anything Goes In Concert*, *On Broadway with Kander and Ebb*, *Hairspray In Concert*, *Irving Berlin: From Rags to Ritzes* (Carnegie Hall), *Ashley Brown's Broadway*, *Pops Goes Vegas!*, *Disco Days and Boogie Nights*, *Guys and Dolls In Concert*, *Sandi Patty's Broadway*, and *South Pacific in Concert*. She has designed costumes for theatres across the country, including the Denver Center Theatre Company, San Diego's Old Globe Theatre, the Arvada Center, La Jolla Playhouse, Arizona Theatre Company, Geva Theatre, Dallas Theatre Center, San Diego Repertory Theatre, Sacramento Theatre Company, North Shore Music Theatre, Aurora Theatre, and Perseverance Theatre in Juneau, Alaska. Clare has also designed extensively for Shakespeare at the Colorado, Lake Tahoe, Idaho, and San Francisco Shakespeare Festivals. Her work for dance includes *3rd Law Dance*, *Frequent Flyers Productions*, *Isaacs McCaleb and Dancers*, among others. She has been on the faculty at UC Davis, UC Berkeley, and CU Boulder. She has won numerous awards for her work, including the Bay Area Critics Circle Award, Dallas Critics Circle Award, Denver's Henry Award and the *Denver Post* Ovation Award. clarehenkel.com

Jennifer Ladner, *Director & Choreographer*, danced in the companies of Arizona Ballet Theatre, Dance Kaleidoscope, and Gregory Hancock Dance Theatre. She has performed with orchestras across North America in *Sophisticated Ellington Symphony and Swing* and *Pops Goes Vegas*. She was a guest artist in symphonic pops concerts at Carnegie Hall with the Cincinnati Pops and the National Symphony at the Kennedy Center, in addition to working with the Detroit, Alabama, Pittsburgh, Indianapolis, Seattle, Portland, and the Baltimore Symphony Orchestras. Local credits include *Starlight Musicals* and being a familiar face at *Beef & Boards Dinner Theatre*, *Pyramid Players*, *Phoenix Theatre*, and *Indiana Repertory Theatre*. She was on the faculty at Butler University for 25 years and currently serves as a national emcee/judge for CRU Dance Competitions, *Power of Dance*, and the *United States Tournament of Dance*. Jennifer was assistant director for *Tradition—Gala for the Dancers Fund at Lincoln Center*. Symphonic choreography and staging credits include: ISO's *Yuletide Celebration*, *The BSO's Holiday Spectacular*, *Broadway Blockbusters*, *Leading Men of Broadway*, *Broadway Divas*, *Cole*, *Baby Boomers*, *Disco Days & Boogie Nights*, *Pops Goes Vegas*, *Sandi Patty's Broadway*, *Hello, Dolly!* *Guys and Dolls*, *Hairspray*, *Ashley Brown's Broadway*, *Irving Berlin*, *On Broadway with Kander and Ebb*, *Anything Goes*, *Classic FM*, *Cirque Goes to the Movies*, and *A Sondheim Celebration*. This past spring Jen happily returned to *Beef & Boards Dinner Theatre* to choreograph *The King & I* and with the ISO as Director/Choreographer for *South Pacific in Concert*.



TAKE3

"TAKE3 grabbed that light with a bold, aggressive tone and a body language that speaks loud and clear to audiences raised on rock videos."

- Los Angeles Times

Born out of the practice rooms of the country's top conservatories, **TAKE3** lives at the intersection where pop, rock and classical fusion collide. Their unmistakable style and infectious joy in music making can be witnessed in two performances in Central Indiana!

Tuesday, April 8, 2025 | 7:30 PM

The Cabaret – 924 N Pennsylvania St, Indy

NEARLY SOLD OUT - Enjoy TAKE3 in an intimate setting at **The Cabaret** in downtown Indianapolis with catering provided by The Jazz Kitchen. Full tables of two, four or six can be reserved in advance for an additional \$10 per seat. Call (317) 637-4574 to learn more.

Wednesday, April 9, 2025 | 7:30 PM

Hendricks Live! – 200 W Main St, Plainfield

The trio will perform an amplified performance in this co-production with **Hendricks Live!** in their newly-constructed Performing Arts Center in Plainfield, Indiana.

TICKETS AT VIOLIN.ORG



YOUNG PROFESSIONALS FOR THE ISO

INDIANAPOLIS SYMPHONY ORCHESTRA



The mission of FORTE is to develop a network of supporters for the Indianapolis Symphony Orchestra by offering engaging, symphony-focused opportunities for young professionals.



Learn more at IndianapolisSymphony.org/forte

AES Indiana *Yuletide Celebration* Production Staff

Matthew Meeks, *Stage Manager*, is happy to return to the ISO and *Yuletide Celebration* families. He is an AEA Stage Manager based in the Twin Cities and has worked with The Guthrie Theater (*Little Shop of Horrors*, *The Importance of Being Earnest*, *Into the Woods*, *A Christmas Carol*, SITI Company's *The Bacchae*, and many others), South Coast Repertory (*JOAN*) a world premier, American Players Theatre (Three seasons in the woods, most recently: *Hamlet*, *The River Bride*, and *Stones in His Pockets*), Ten Thousand Things Theater (*The Hatmaker's Wife*, *Mlima's Tale*), and Minnesota Orchestra (*Home for the Holidays*). Thanks to you for supporting and celebrating live art! All my love to Hannah and the family.

Travis McHale, *Associate Lighting Designer*, is excited for his eleventh *Yuletide*! Broadway: associate lighting designer on eleven shows including *Something Rotten!*, *Sunset Boulevard*, *War Paint*, and *Hello, Dolly!* Recent lighting designs include *Is There Still Sex In The City*, *#DateMe*, *Mister Miss America?* (Off-Broadway) and over 25 shows on cruise ships for Regents Seven Seas, Oceania, and Carnival Cruise Lines. His award-winning designs have been seen at major regional theatres, and on PBS for *Great Performances*, at Carnegie Hall, in dozens of fashion shows for NY Fashion Week, and on tour internationally. Travis is on faculty at SUNY New Paltz and is a proud member of United Scenic Artists Local 829. www.travismchale.com

Ken Saltzman, *Production Stage Manager*, is pleased to return to the ISO for his 24th *Yuletide Celebration* after stage managing *South Pacific In Concert* for the ISO. Previously, he stage managed *Aida In Concert* with Detroit Opera, his 73rd production with the Company. He is also deeply honored to be collaborating with the incomparable Sandi Patty on her 10th *Yuletide Celebration*. Ken and his husband of 33 years, Duane Prill, make their home in New York's Finger Lakes region where they manage the Lamoka Hideaway. Healthy food is fundamental to well-being and the foundation of a strong, vibrant society. Support your local food bank!

Greg Sanders, *Vocal Director*, finished his master's degree in conducting at Butler University in May 2011. He currently serves as the artistic director of the Indianapolis Men's Chorus and is on staff at the Center Grove High School Choral Department. Greg is in demand as an arranger and orchestrator. He is also a pianist, vocal coach, and chamber musician, preparing and performing extensively for concerts and festivals in Indianapolis and regionally. He returns to the ISO production team after serving as the vocal director for many Printing Partners *Pops Series* productions. This is his eleventh year with AES Indiana *Yuletide Celebration*.



WE
STUDENTS

\$15

Student Tickets

From Beethoven to Broadway,
student tickets are available for
most performances for only \$15!



For more information, call the ISO Box Office at **317-639-4300**, or visit IndianapolisSymphony.org





Affordable plans Most trusted care Unmatched experience

Our Medicare Advantage and Employer health plans have it all.



Health Plans



Scan QR code or visit iuhealthplans.org/4u to find more info about our plans.

INDIANAPOLIS | SYMPHONY ORCHESTRA

ASSOCIATION

PEOPLE WITH PASSION FOR MUSIC

GIVE. ADVOCATE. VOLUNTEER.

The ISOA is an all-volunteer organization that enthusiastically coordinates music education activities and fundraising events for the Indianapolis Symphony Orchestra. We promote and support youth programs that include Discovery Concerts, Symphony in Color, Young Musicians Contest, Side-by-Side, and the Metropolitan Youth Orchestra. Our collaborative work on common goals creates fellowships, raises funds, and inspires art. Through our volunteer opportunities, members of the ISOA share close bonds with both music and with one another.

WE WELCOME YOU TO JOIN THE ISOA TODAY.

IT'S FUN. IT'S EASY. IT'S REWARDING.



1. Open up your smartphone camera
2. Hover over this QR code
3. Tap the info when it appears!

To learn more about the ISOA, scan the QR code below to visit our website - www.passionformusic.org and use the ISOA brochure sign-up form!

Endowment

Endowed Orchestra Chairs, Performances, and Special Endowments

Endowed orchestra chairs, performances, and special endowment gifts allow our benefactors the opportunity to be recognized for their significant gifts to the Orchestra or to honor others. We would like to thank the following donors for their generous support of the Indianapolis Symphony Orchestra's Endowment Fund.

Endowed Orchestra Chairs

The Ford-West Concertmaster Chair

Endowed by Richard E. Ford in honor of his mother, Florence Jeup Ford, and Hilda Kirkman West
Kevin Lin, Concertmaster

The Meditch Assistant Concertmaster Chair

Endowed by Juliette, Dimitri, Marian, and Boris Meditch
Peter Vickery, Acting Associate Concertmaster

The Wilcox Assistant Concertmaster Chair

Endowed by David E. and Eleanor T. Wilcox
Michelle Kang, Assistant Concertmaster

The Taurel Assistant Principal Second Violin Chair

Endowed by Kathy and Sidney Taurel
Marisa Votapek, Assistant Principal Second Violin

The Dick Dennis Fifth Chair

Endowed in memory of Richard F. Dennis by Carol Richardson Dennis
This Second Violin Section Chair is Seated Using Revolving Seating

The Jane and Fred Schlegel Principal Viola Chair

Endowed by Jane and Fred Schlegel
Yu Jin, Principal Viola

The Assistant Principal Cello Chair

Endowed anonymously
Nicholas Donatelle, Acting Assistant Principal Cello

The Randall L. Tobias Cello Chair

Endowed by Randall L. Tobias
This Cello Chair is Seated Using Revolving Seating

The Dr. and Mrs. Robert L. Rudesill Cello Chair

Endowed by Dr. and Mrs. Robert L. Rudesill
This Cello Chair is Seated Using Revolving Seating

The Sidney and Kathy Taurel Principal Flute Chair

Endowed by Sidney and Kathy Taurel
Austin Brown, Principal Flute

The Janet F. and Dr. Richard E. Barb Piccolo Chair

Endowed by Janet F. and Dr. Richard E. Barb
Dianne Seo, Piccolo

The Frank C. Springer Jr. Principal Oboe Chair

Endowed by Frank C. Springer Jr.
Jennifer Christen, Principal Oboe

The Ann Hampton Hunt English Horn Chair

Endowed by Ann Hampton Hunt
Roger Roe, English Horn

The Robert H. Mohlman Principal Clarinet Chair

Endowed by the Robert H. Mohlman Fund
Sam Rothstein, Acting Principal Clarinet

The Huffington Assistant Principal Clarinet Chair

Endowed in memory of Robert Huffington by Clarena Huffington
Campbell MacDonald, Acting Assistant Principal Clarinet

The Robert L. Mann and Family Principal Horn Chair

Endowed by Robert L. Mann and Family
Robert Danforth, Principal Horn

The Bakken Family Horn Chair

Endowed by Dawn, Ruth, and Darrell Bakken
Alison Dresser, Horn

The W. Brooks and Wanda Y. Fortune Principal Trumpet Chair

Endowed by W. Brooks and Wanda Y. Fortune
Alex Schwarz, Acting Principal Trumpet

The Dr. and Mrs. Charles E. Test Trombone Chair

Endowed by Dr. and Mrs. Charles E. Test
Riley Giampaolo, Bass Trombone

The Thomas N. Akins Principal Timpani Chair

Endowed anonymously
Jack Brennan, Principal Timpani

The Walter Myers Jr. Principal Harp Chair

Endowed anonymously in honor of Walter Myers Jr.
Claire Thai, Principal Harp

The Dorothy Munger Principal Keyboard Chair

Endowed by the Women's Committee of the Indianapolis Symphony Orchestra

Endowment

Endowed Performances

Classical Season Opening Concerts

Endowed by the Florence Goodrich Dunn Fund
October 4–5, 2024

The Performance of a Young Professional Artist

Endowed by Roche Diagnostics
October 18–19, 2024

The Frank E. McKinney, Jr. Guest Conductor Chair

Endowed by Marianne Williams Tobias
October 25–26, 2024

The Performance of ISO Principal Chair Musicians

Endowed by the Eugene B. Hibbs Fund
November 1–2, 2024

AES Indiana Yuletide Celebration Opening Night Performance

Endowed by Marianne Williams Tobias
December 6, 2024—Opening Night

AES Indiana Yuletide Celebration Closing Performance

Endowed by Marianne Williams Tobias
December 23, 2024—Closing Night

The Performance of New Music

Endowed by LDI, Ltd.
January 24–25, 2025

Frank and Irving Springer Piano Performance

Endowed by Frank C. Springer Jr.
January 31–February 1, 2025

The Mrs. Earl B. Barnes Memorial Fund in support of a Guest Artist

Endowed Anonymously
February 14–15, 2025

The Paul and Roseann Pitz Performance of Classical Music

Endowed by the Paul and Roseann Pitz Fund
March 7–8, 2025

The Performance of a Guest Artist

Endowed by the Jean D. Weldon Guest Artist Fund
April 25–26, 2025

The Paul Family Performance of Classical Music

Endowed by Dorit and Gerald Paul, Eloise Paul
May 2–3, 2025

The Dennis T. Hollings Performance of Classical Music

Endowed by the Dennis T. Hollings Fund
May 16–17, 2025

The William L. and Jane H. Fortune Guest Conductor Chair

Endowed by Mr. and Mrs. William L. Fortune
May 30–31, 2025

The Performance of Classical Music including Major Liturgical and Choral Music

Endowed in memory of Elmer Andrew and Marguerite Maass Steffen by E. Andrew Steffen
June 20–21, 2025

Special Endowments

Hilbert Circle Theatre

Endowed by Stephen and Tomisue Hilbert

Opening Night Gala

Endowed by Christel DeHaan

Community Engagement Programs

Endowed by the Christel DeHaan Community Engagement Fund

The Tobias Green Room

Endowed by Randall L. Tobias

The Maestro Society

Dr. John C. Bloom, Mr. Raymond Leppard, Dr. and Mrs. Gordon E. Mallett, Mrs. Walter Myers Jr., Marianne Williams Tobias, Randall L. Tobias, August and Margaret Watanabe, Jack Weldon (Maestro Society Founder) given by Penny Ogle Weldon, Mr. and Mrs. Richard D. Wood Edna Woodard-Van Riper

The Marianne Williams Tobias Program Annotator Chair

Endowed anonymously

Artist-in-Residence Endowment

Endowed in memory of Hortense and Marvin Lasky

The Paul E. and Martha K. Schmidt Conducting Study Fellowship

Endowed by Paul E. and Martha K. Schmidt

The Michael Ben and Illene Komisarow Maurer Young Musicians Contest

Endowed by Michael Ben and Illene Komisarow Maurer

The Instrument Petting Zoo

Endowed by Dr. and Mrs. Gordon E. Mallett

Endowment

The Indiana Series

Endowed by Mr. and Mrs. J. Irwin Miller

The Indianapolis Symphony Orchestra Vice President of Education

Endowed by Mr. and Mrs. William L. Fortune

The Marilyn K. Glick Young Composer's Showcase

Endowed by Mr. and Mrs. Eugene B. Glick

The ISO Pre-School Music Education Programs

Underwritten by the Tobias Family Foundation

First Monday Music Club

Endowed anonymously

The Sarah McFarland Endowment

Endowed by the Sarah McFarland Fund

The Pitz Leadership Award

Endowed by the Paul and Roseann Pitz Fund

The Installation and Maintenance of a Theatre Pipe Organ

Endowed by the Sally Reahard Fund

The J.K. Family Foundation Words on Music

*Endowed by Marianne Williams Tobias, President,
J.K. Family Foundation*

The Outer Lobby

*Named to Recognize the Generous Gift of Ruth Lilly
to the Indianapolis Symphony Orchestra 1984*

The Grand Lobby

Endowed by Marianne Williams Tobias

The Box Office Lobby

*Named in Honor of Generous Support from
Marianne W. and Frank E. McKinney Jr.
"The Art and Science of Music are an Enduring
Reflection of the Thoughts & Experiences of
Humankind," June 1991*

Second Floor Lobby

*Named in memory of William Fortune, prominent
civic leader, by a generous gift from William L.
and Jane H. Fortune*

Orchestra Box C1

*This Orchestra Box Endowed by
Mrs. Bailey (Gladys) Swearingen*

Orchestra Box C2

*This Orchestra Box Endowed by Sandra Lee
and H. Tuck Schulhof*

Orchestra Box C3

*This Orchestra Box Endowed by Herschel and
Angela Porter*

Orchestra Box C4

This Orchestra Box Endowed by E. Andrew Steffen

Orchestra Box C6

*This Orchestra Box Endowed by Mrs. Rhonda Kittle
in honor of her late husband, James L. Kittle*

The Oval Promenade

*Named to Recognize the Generous Gift of the Eli Lilly
and Company Foundation to the Indianapolis Symphony
Orchestra. October 1984*

Stage Terrace Seating

Endowed anonymously

Special Acknowledgments

Performance of the Wurlitzer Pipe Organ

Generously underwritten by David and Eleanor Wilcox

The New Steinway Concert Grand Piano

*Given in memory of Mr. and Mrs. William H. Ball
by Mrs. Lucina B. Moxley*

The Music Library Office

*Underwritten by the Musicians and Staff of the
Indianapolis Symphony Orchestra in memory of
Richard Grymonpré*

The ISO Association Office

Endowed by Peggy & Byron Myers

**If you would like to make a special endowment gift, please contact the
Vice President of Development Stephanie Hays-Mussoni at
shaysmussoni@IndianapolisSymphony.org or call 317-713-3342.**

Thank you to our generous supporters!

Annual Fund Donor Honor Roll

It is our privilege to list the following donors who have contributed \$1,000 or more to the Indianapolis Symphony Orchestra's annual fund. Every donor is a valued partner in each achievement, both onstage and throughout our community outreach and education programming.

This listing reflects the gifts received from August 1, 2023, to September 30, 2024. Every effort has been made to ensure the accuracy of this listing. However, we apologize for any inadvertent errors or omissions.

\$100,000 and Above

Anonymous
John and Sarah Lechleiter
Estate of Mr. and Mrs.
Art Mirsky

Anonymous
AES Indiana
Allen Whitehill Clowes
Charitable Foundation,
Inc.
Dodd Technologies, Inc.
Efroymsen Family Fund
Eli Lilly and Company
Foundation
Indianapolis Symphony
Orchestra Association
IU Health Plans
The Kroger Company
Lilly Endowment, Inc.
Margot L. Eccles Arts &
Culture Fund, a CICF
Fund
Printing Partners

Music Director (\$50,000–\$99,999)

The Kenney Family
Robert and Alice Schloss
Yvonne H. Shaheen
Ann M. Stack
Richard and Lois Surber

Bank of America
BMO
Huntington National Bank
Indianapolis Colts Inc.
The Jewish Federation of
Greater Indianapolis,
Inc.
Nicholas H. Noyes, Jr.,
Memorial Foundation,
Inc.

Concertmaster (\$20,000–\$49,999)

Anonymous
John C. Bloom
Victoria Broadie
Daniel Carmichael
Rollin and Cheri Dick
Craig and Connie
Fenneman
Mark and Dianne
Foglesong
John and Chi Chi Guy
James and Pat LaCrosse
Dr. Ned and Martha
Lamkin
Eli and Deborah Lilly II
Gregory and Alexandra
Loewen
Mark and Kate Mutz
Jackie Nytes
Christopher Slapak and
Michael Robertson
Martin and Mary Walker
David and Eleanor Wilcox
William and Roberta
Witchger
The William Witchger
Charitable Fund, a fund
of The Indianapolis
Foundation

American Honda Motor
Co. Inc.
Arthur Jordan Foundation
The Arts Council of
Indianapolis
Barnes & Thornburg LLP
Community Health
Network
Corteva Agriscience
IBEW Local #481
The Indianapolis Star
National Endowment for
the Arts
OneAmerica Financial
Pacers Sports &
Entertainment

Ruth Lilly Philanthropic
Foundation
Telamon Corporation

First Chair (\$10,000–\$19,999)

Anonymous (3)
Brad Akerman and Jeff
Reider
Trudy W. Banta
Thomas and Dawn Bennett
Charles and Joyce Boxman
Mike and Pat Byers
Chris W. and Lesley J.
Conrad
William and Angela Corley
Patrick R. Corsi
Craig and Elizabeth
Dykstra
Natalie Furney
Charles and Susan Golden
Donald and Carolyn
Hardman
Henry Havel and Mary
Stickelmeyer
Peter and Emily Howard
Peg Kimberlin
Eugene and Cathy Kroeff
Matt Landman
Eleanor Lopez
Bruce and Jamie McCaw
Jim Miller
Ellie, Weber and Emaline
Morse
Dr. Phillip and Beth
Mosbaugh
Jack and Katie Patterson
Eloise Paul and Bill Lee
Donald and Karen Perez
Scott Putney and Susan
Sawyer
Alan and Deborah Rasper
Kenneth and Debra
Renkens
Mary Frances Rubly
Stephen and Margaret
Russell
David and Marcia Sapp

Phyllis Schahet
Maribeth and Al Smith
Susanne and Jack Sogard
Larry and Sandra Speer
Eric Sutphin
James and Linda Trippi
Margaret and Horst
Winkler Fund
Frederick and Jacque
Winters

AAA Hoosier Motor Club
Anonymous
Care Institute Group
E & J Gallo Winery
Fifth Third Bank
Garmon Construction
Glick Philanthropies
Indiana Arts Commission
Indiana Members
Credit Union
James O. & Alice F. Cole
Foundation
KPMG
Recorder Media Group
Williams Comfort Air &
Mr. Plumber

Conductor's Circle (\$5,000–\$9,999)

Anonymous (4)
Jeffrey and Wendy Adams
Robert and Pat Anker
Douglas and Deborah
Balogh
Ronald and Helmi Banta
Charlene Barnette
Sarah C. Barney
Michael and Mary Jane
Becher
James and Lynda Beckel
Eric and Elaine Bedel
Katherine Benedict
The Paul F and Martha
L. Benedict Charitable
Family Fund
Christina Bodurow

John and Nancy Bratt
Nancy and David
Breitweiser
Donald and Barbara
Broadlick
Charles Brown and Louise
Tetrick
Gordon Bruder and Celia
Surface-Bruder
Kiamesha Colom and
Joseph Delamater
Pat and Jennifer Cross
James and Barbara Curtis
Rick and Jody Dennerline
Steve and Mary DeVoe
Tom and Judy Eggers
Dr. Thomas and Paula
Elam
Dean and Beth Flaris
Michael and Kathy Flaugh
Dr. and Mrs. Larry C.
Franks
Stephen F Fry and Colleen
M. Mockbee
Dr. Richard and
Bonnie Garrett
Francis and Nancy Gootie
Thomas and Mary Grein
Jane Henegar and Matt
Gutwein
Robert Hallam
Steve Hamilton
Dan and Vicky Hancock
Fred Hecker
Gregory Henneke and
Martha O'Connor
W. Seymour and
Rheta Holt
Ann H. Hunt
Larry and Annette
Hutchison
Raymond and
Laura Ingham
James M. Johnson and
Jennifer B. Katz
Wayne and Deborah
Johnson
Phyllis Karrh
Robert and Rhonda
Kaspar
David and Gretta Kelly
Ned and Wendy Kirby
Sandy and Cindy Lange
Connie Floyd Latas
Karen Ann Lloyd and
Kara Jenkins
John and Carol Longfellow
James and Sarah Lootens
Malcolm and Joyce
Mallette

Karen Mangia
Lucia J. Mar
Dr. Daniel Mowrey
John and Carolyn Mutz
Carl and Loui Nelson
Charles J. and Patricia
O'Drobinak
Robert and Terri Orr
Jane Paine
Joan Perelman
Steven and Linda Priddy
Priddy Family Charitable
Fund
Jeff and Clare Quinn
Steve and Tricia Rake
Randall and Diane
Rowland
Nicholas Schellinger
Richard and Jamie Schulte
Robert and Mary Shellman
Lei Shen and Soomin Park
Joanne Solomon
Dr. Pamela Steed
Randall and Bonnie Strate
Justin Sufan
Mary Ann Thiel
Jeffrey and Benita
Thomasson
Diane G. Thompson and
Don Knebel
William and Karen
Thompson
Randall and Deborah
Tobias
Jerry and Linda Toomer
Joe and Diane Vande
Bosche
Lainie Veenstra
Victoria and Chris Weyers
William and Arlene
Wheeler
James P. White
David Whitman and
Donna Reynolds
Lynn and Andy Wiesman
Dr. and Mrs. Jay Wish
Christian Wolf and
Elaine Holden
John Workman
Diana and Dan Yates
Barrie and Margaret
Zimmerman
John and Linda
Zimmermann
Jim and Rita Zink

1816 Public Affairs Group
The Ackerman Foundation
Citizens Energy Group

Community Foundation of
Boone County
Cowles Wealth Partners
– Rockefeller Global
Family Office
Duke Energy Indiana
Edward Jones
Emmis Communications
Enflora Flowers for
Business
Enterprise Mobility
F.A. Wilhelm
Construction
Force Tech
Heaven Hill Distillery
Hero Hut
Merrill Lynch
NFP
PNC
Rock Island Refining
Foundation
Schmidt Associates, Inc.
Thompson Wealth
Management Group
Verdure Sciences

**Founders' Society
(\$2,500-\$4,999)**

Anonymous (4)
Michael and Amy Alley
Charles Bantz and Sandra
Petronio
Richard and Janet Barb
Mark K. Bear
Scott and Amy Beattie
William and Paivi
Blanchard
Chris and Barbara Bodem
William and Sheila Bosron
Douglas and Angela Braly
The Braly Family
Foundation
Vincent C. & Robyn A.
Caponi Foundation, a
fund of The Indianapolis
Foundation
Douglas and Kathleen
Church
John and Ulla Connor
Dexter and Rosemary
Cooley
Trent and Amy Cowles
Douglas B. Day and Mary
Ann Kanervo
Manuel and Sara Debono
Neil and Dianne DeLapp
Ann Dettwiler
Dennis Dickos

Bob and Phyllis
Webster-Doles
William and Catherine
Ehlhardt
Niel and Karen Ellerbrook
Andrew and Irene Engel
William and Edith Enright
Jill and John Failey
Pamela and Donald Fogle
Steve and Lisa Ford
Tom Forman and John
Mays
Mary Forster
L. D. and Jan Foster
Dick and Brenda Freije
Kathy and Gene Gentili
Dr. Lawrence I. Goldblatt
Joseph and Kathy Grahn
Charlie and Lori Grandy
Robert and Barbara
Gregory
Mr. M. Stephen Harkness
Richard and Karen
Harrison
Greg Hausz and Debbie
Perkins
Gerald and Hannelore
Hinchman
Allan and Kathy Hubbard
Kristine Isenberg
Joseph Jakubowski and
Ruth Kramer
Joanne W. Orr Charitable
Marc and Dana Katz
David Kleiman and Susan
Jacobs
Dr. Elisabeth Krug and
Roland Schaffer
Dennis and Karen Licht
Living Waters Company,
Inc.
Lori Long
David and Barbara Malson
Benton and Sandi Marks
Dr. Patrick McHugh and
Ms. Taylor Mathis
Thomas and Jennifer
McNulty
David and Andrea Miller
Flip and Cindy Miller
Milton and Margaret
Miller
Terry Moore
Becky L. Murphy
Michelle Murphy
William and Elizabeth
Murphy
Ralph Oberlander

Thank you to our generous supporters!

Thomas and Stacy O'Leary
Jay and Sally Peacock
Jeffrey and Joyce Peipert
Robert and Kathleen
Postlethwait
Barb Poulsen
Deborah Rawlings
Lyn and Jay Reece
Barb and Tom Reed
Randy and Ann Riggs
Judith L. Robertson
Howard and Lori
Rothstein
Cecil and Susan Salter
David M. Sandoval and
Theresa Dematas
Mary Beth and James
Schafer
Roger and Barbara
Schmenner
Julian and Dawa Shepard
Eric Siemers and Peggy
Edwards
Richard and Susan Simon
Diane Meyer Simon and
Sarah Meyer Simon
Herbert Simon Family
Foundation
Carl and Linda Smith
Jeff and Susan Smithburn
Mr. & Mrs. Lyman A.
Snyder
Bonnie H. Swaim
Terrence and Catherine
Thompson
Nathaniel and LaTonya
Turner
John and Kathy Vahle
Jennifer Weiler and
Michael Patterson
Bernard and Mary Ellen
Weitekamp
Mary Whalin

AD Fund, a fund of The
Indianapolis Foundation
American Structurepoint
Conrad Indianapolis
Indiana Golf Car
MacAllister Machinery
Co. Inc.
Psi Iota Xi Symphony
Fund
Riverview Health
Foundation
RJE Business Interiors,
LLC
SEI Investments

Stone Municipal Group
Woodard Emhardt Henry
Reeves & Wagner, LLP
WTHR Channel 13

President's Club (\$1,500-\$2,499)

Anonymous
Roy and Jan Applegate
Vernon Back and Laura
Walker
Estate of Robert Baerncoff
Richard and Tamara Bailey
Konrad Banaszak
Ed Bartkus
Brett and Shari Bayston
Elizabeth Beck
Jay and Julie Bishop
Pamela Bosh and William
Hubbard
Walter Bruyninckx and
Anne-Marie Blacquart
Chuck and Shirley
Cavalier
David Clements
John and Janice Coleman
Gordon and Harriet
Coppoc
Don and Dolly Craft
Clint and Brooke Cragen
Douglas Davies
Doug Dilling
Sherry Faris
David and Phyllis Fee
Linda Felton
Michael and Ardith
Fleetwood
Dr. Norman and Adrienne
Fogle
David T. Fronck
Charlotte Galloway
Doug and Julia Gard
Katherine L. George
Steven and Chapel Givens
Wallace Gray
Christian and June Gries
Diane Hall
Dr. Shelly Sheats Harkness
Dr. and Mrs. Stephen
Henson
Mark and Nancy
Hershman
Thomas and Nora Hiatt
Alice Greene McKinney
and E. Kirk McKinney,
Jr. Fund, a fund of CICF
Tomisue Hilbert
Ginny Hodowal and
J. Madejey

Howard and Mary Anne
Hoffman
Sharon Hoog and Ken
Remenschneider
Jill Hoyle
Bill and Renate Hubbard
Paul and Barbara Jablonski
Philip and Margaret
Johnston
Alan Jones
Kimra Kidd and Tom
Buehner
James Kiser
Viviana and Dimitri
Koukouломatis
Robert and Gwen Krivi
Mark and Debi Ladendorf
Rosemary Lafrance
Richard and Jan
Lautzenheiser
Kevin Lin
Ralph and Nancy
Lundgren
Michael and Jill Margetts
James and Cheryl Martin
Elaine Massey
Stacy A. Maurer
Stacy A. Maurer
Charitable Fund, a fund
of CICF
Dennis and Anne
McCafferty
Kellie McCarthy
John and Ann McGrath
Darrin and Julia Meacham
Cynthia Miller
Jim and Jackie Morris
Melissa Muha
Guido and Brigitte Neels
Lara Noren
Dennis and Donna Oklak
The Emily Charitable Fund
Linda Osborne
Janeann Pitz and Reinhard
Pollach
Marylynn Pitz and Mark
Weitzman Fund
Susan Porter
Marcia Powell and Dave
Jackson
Roger and Anna Radue
Drs. Randall and Cynthia
Reed
Susan Ridlen
Robert Rifkin
N. Clay and Amy
McConkey Robbins
Byron and Marsha
Robinson
Sarah Rowland
Jim and Patricia Russell

Thomas and Linda Sands
Klaus and Joel Schmiegel
Paul and Mary Sheets
Robert and Holly Sieck
Vona E. Sinclair
Don and Deborah Smith
Rick and Gretchen
Spaulding
Judy Springmire
John and Barbara Stang
Jim and Cheryl Strain
Marcus and Sandy
Strawhorn
T. S. Sun
Kerry Dinneen & Sam
Sutphin
James R. Sweeney II
Nela Swinehart
John Tan
Carol E. Taylor
Kirk and Jo Taylor
Dale and Joanna Weiler
Carol Weiss
Emily A. West
Kathy and Ralph Wilhelm
Carl and Connie
Wooldridge
Steven and Judith Young
Teresa Youngen
Leslie and Anna
Zimmerman
Darell and Mary Ann
Zink Jr.

The Brave Heart
Foundation
CBIZ Somerset
CSO Architects
Lenex Steel
Broadway United
Methodist Church
Peterman Brothers
Sweetgreen
Zink Family Foundations,
Inc.

Symphony Club (\$1,000-\$1,499)

Anonymous (5)
James Aikman
David S and Mary R Allen
Daniel and Kate Appel
Constance Applegate
James and Mary Babb
Terry and Patricia Balko
Michael and Mary Ellen
Ball
Jon and Barbara Ballester
Roger and Barbara
Barksdale

Frank and Katrina Basile
 Lori Batchelder
 Joe and Julie Bielawski
 Sarah Binford
 Samuel and Carol Bixler
 Carolynne Bobbitt
 Bryan and Elaine Brenner
 The Brenner Family
 Foundation, a fund of
 Hamilton County
 Community Foundation
 Dr. Harry D. Brickley
 Mark V. Bromund Fund, a
 fund of Central Indiana
 Comm Foundation
 Alice Brown and Randy
 Trowbridge
 Jennifer Browning
 Mary Brunner and
 J. Overhage
 Jack and Pam Burks
 Kenneth and Patricia
 Burow
 Chris Campbell
 Matthew and Elizabeth
 Carlton
 Robert and Margaret
 Cedoz
 Steve and Kimberly
 Chatham
 Janet Cheek
 Peter Chen and Hsiao-han
 Chiu
 Drs. Lisa and Ray Childers
 Steve and Carol
 Christenberry
 Jane H. Conley
 Kevin and Trisha Corcoran
 Raymond and Kim Cox
 John and Kathleen Crone
 Jeff Curiel and Kate Kester
 Julie and Cary Curry
 William and Sally Dahm
 Richard and Angela
 Darlington
 Dr. Frank and Norah
 Deane
 Mark DeFabis
 David and Melissa
 DeHaven
 Anne N. DePrez
 Julie and David DeWitt
 Bruce and Martha Diaz
 Linda DiPaola
 David and Denise Donley
 Ron and Joan Dunn
 Wayne and Lynne Eckerle
 E.R. and Patricia Edwards
 Weldon T. Egan
 Richard Ellison
 Richard Farmer
 Dr. Harvey and Phyllis
 Feigenbaum
 James and Gracia Johnson
 Floyd
 Kenneth Fraza
 Edwin Free III and
 Cynthia Zweber-Free
 David and Ann Frick
 James Gallagher
 Dennis and Leslie Gardner
 Robert Giannini
 Robert and Kimberly
 Glavan
 Robert Goulet
 Mr. Brian Grant
 Greenfield Family Fund, a
 fund of The Indianapolis
 Foundation
 John and Mary Ann
 Grogan
 Thomas and Kati Guevara
 Thomas and Susan Hacker
 James and Paula Hancock
 David and Susan Hansen
 Karin Hansen
 Dennis Haworth
 Lisa Heid
 Heid Goldstein Family
 Charitable Fund
 Eugene and Helene Henn
 Ronald Hermeling
 Terry Hickey
 Sotiris Hji-Avgoustis and
 J. Molleston
 Drs. Nicole and Bill
 Hoffmeyer
 The Hoover Family
 William and Peggy Hoover
 Dave and Marcia Huffman
 Aimee Hughes
 Michele and David Imler
 Gerald R. Jenn
 Jenn Foundation
 Bob and Ellen Johnson
 The Kane Family
 James Karrer
 Robert Kassing
 Aldy and Natinne Keene
 Steven and Carla Kennedy
 Richard and Susan Kent
 Ruth Anne Kerby
 Joe Kessler
 Sheryl M. King
 Richard and Anne Kohler
 Jane E. Koschka
 Richard and Roxanne
 Kovacs
 The Kruzels
 William and Joellen Lee
 Louise Lingner
 Trevor and Jenny
 Loyd-Jones
 Alfred and Joyce Long
 Grace Long
 Dr. & Mrs. Mark A. Kahn
 Donald and Ruth Ann
 MacPherson
 Kevin Malley and Ronald
 Nobles
 John and Kay Mastarone
 Barb and Bill McConnell
 Mr. and Mrs. Ralph
 McCormick
 Doris McCullough
 Alan and Ann McKenzie
 Marni McKinney
 Sandy McLean
 Allen and Deborah Miller
 Sue Mitchell
 Dr. and Mrs. Douglas
 Moore
 Michael and Marilyn
 Moore
 Martha and Tom Moore
 Aileene Mullen
 Delores Muller
 Dr. Patrick Murphy and
 Rita Jo Murphy
 Jeremy Mussoni and
 Stephanie Hays-Mussoni
 James and Susan Naus
 Ralph Nowak
 Frank and Sarah Otte
 Troy Payner
 Marvin and Anne Perry II
 William and Beverley Pitts
 David and Arden Pletzer
 Endowment Fund,
 a fund of Hamilton
 County Community
 Foundation
 Robert Potts
 Larry and Nancy Pugh
 Myrta J. Pulliam
 Nina Mason Pulliam
 Charitable Trust
 Patricia Ragan
 Jason and Jamie Rich
 Rebecca Roberts and
 Dennis Mann
 John and Kathy Rufatto
 Roxann K. Sanders
 William and Kimberly
 Schaming
 Steven and Linda
 Schneider Family
 Foundation, a fund of
 Hamilton County
 Community Foundation
 Dan McCampbell and
 Steve Schwartz
 John A. Seest
 Carole Sendmeyer
 Thomas and Nancy
 Shryock
 Richard and Theodora
 Shuck
 Dr. & Mrs. Robert Silbert
 Jeff Skoll
 Audrey Smith
 R. Brentson Smith
 James and Nancy Smith
 Jeffery and Christy Soldatis
 Steve Spaulding and
 Jennifer Hendrian
 Mark Stall
 Bill and Mary Lou Stanley
 SWP
 B. Stevens
 John Stevens
 Jonathan and Carol
 Sundheimer
 Sumi and Andrew
 Swearingen
 Sally Syljebeck
 L. Gene Tanner
 Jean Thompson
 Douglas L Tillman
 John and Judy Tomke
 Jane Tomlin
 Yecenia H. Tostado
 William and Emily Ward
 Beverly Watkins
 Paul and Gretchen Watson
 Courtenay and Emily
 Weldon
 Jane Wenzel
 Louis and Laura Wenzler
 Philip and Shandon
 Whistler
 Mr. & Mrs. Frederic
 Wiese Jr.
 Mr. and Mrs. Albert Will
 Meredith and Judith
 Wilson
 Bob and Debbie Wingerter
 James and Karen Wolf
 Melissa and Steven Zabel
 Michael and Sara Zeckel
 Charles Schwab & Co., Inc.
 Penrod Society

Thank you to our generous supporters!

Contributed Goods & Services

Arts Consulting Group
Charlene Barnette
CityMoms Indianapolis
Coca-Cola Consolidated, Inc.
Bill and Ann Cummings
Dodd Technologies Inc.
Linda Dodd-Lawhorn
E & J Gallo Winery
Enflora Flowers for Business
Force Tech

Fox59
The Indianapolis Star
IU Health Plans
The Kroger Company
MacAllister Machinery Co. Inc.
Porch Marketing
Printing Partners
Recorder Media Group
Republic National Distributing Co.
Yvonne H. Shaheen
Sun King Brewing Co.
Sweetgreen
Estate of Marianne Williams Tobias

WFYI Radio and Television
WICR Radio

Frederick and Jacquie Winters
WRTV-6
WTHR Channel 13

This listing of Honor Roll donors on these pages represents those who have contributed \$1,000+. Scan this QR code with the camera on your phone to join this wonderful group of donors.



Tribute Gifts

Tribute gifts are an excellent way to honor someone who values the Indianapolis Symphony Orchestra, and they help ensure the continued excellence of the Symphony. We gratefully acknowledge the following tribute gifts received from August 1, 2024, to September 30, 2024.

Memorial Gifts

In Memory of Carl (Bud) Brehob
Carl E. Brehob Family Fund
Milly Brehob

In Memory of Marjorie Cox
Raymond and Kim Cox

In Memory of Carlyn Johnson
Dr Ned and Martha Lamkin

In Memory of Irma Rae Swickard Judkins
Ruth Ann Skoronski

In Memory of Fred W. Ruebeck
Beverly Ruebeck Charitable Fund
Beverly Ruebeck

In Memory of Breanne Smith
Michael Smith

In Memory of Jack Sogard
Susan Sterner

Honor Gifts

In Honor of Chris Bodurow
Emily Frische

In Honor of Jennifer Farquhar
Robert and Emma Shock

In Honor of Chef Joseph's and Juan's anniversary
Scott Putney and Susan Sawyer

In Honor of Leah Ollie
Beth Kloote

In Honor of Diane Meyer Simon
Herbert Simon Family Foundation
Sarah Meyer Simon

In Honor of Marion Wolen on her birthday
Dona L. Armstrong
Rosalind Wolen

In Honor of the volunteers of ISOA
William and Sheila Bosron

The Lynn Society & Forever Sound Society

Remembering the ISO in Your Will

Are you interested in making a gift that will make a lasting difference on the work of the Indianapolis Symphony Orchestra? You can do it today with a legacy gift in your will.

This special gift:

— Is easy to arrange with a financial advisor or consultant. A simple paragraph added to your will is all it takes.

— Can be changed or revoked as needed, preserves your savings and cash flow, and costs you nothing during your lifetime.



Your legacy matters! Contact Stephanie Hays-Mussoni, Vice President of Development, with questions about The Lynn Society at 317-713-3342 or email shaysmussoni@IndianapolisSymphony.org.



JOIN FOREVER SOUND SOCIETY

The Forever Sound Society is a special group of sustaining donors whose monthly gifts enable the ISO to provide Central Indiana with the highest quality live, symphonic music.

Top 5 Reasons to Join

- 1** Set it and forget it! No more trying to remember when you made your last gift.
- 2** Smaller, monthly payments are easier on your bank account than one large one.
- 3** You receive benefits for the full 12-month total.
- 4** Helps provide a steady stream of income for the ISO all year long.
- 5** Helps the ISO be more environmentally friendly with less paper and postage.



Scan the QR code to learn more or contact Senior Director of Annual Giving Rose Branson at rbranson@IndianapolisSymphony.org or 317-742-9579.

The Lynn Society

The Lynn Society has been established to recognize and honor those who, like Charles and Dorothy Lynn, wish to ensure the artistic greatness of the Indianapolis Symphony Orchestra in perpetuity.

Leave your mark on the future of the Indianapolis Symphony and generations of musicians to come!



Lynn Society Members

Members of The Lynn Society have made a legacy gift or have notified the orchestra of their intention to make a legacy gift through their estate plans.

- Anonymous (20)
Anna Ross Alexander*
Albert & Gail Ammons
Bob* & Pat Anker
Earleen M. Ashbrook
Ms. Nancy Ayres
Robert and Toni Bader
Joan Baker*
Dawn, Ruth & Darrell* Bakken
Janet F. and Dr. Richard E. Barb
Frank & Katrina Basile
Mrs. Raymond A. Basso*
Dr. John E. Batchelder*
Mrs. Paul F. Benedict*
Dale & Barb Benson
Miss Helen F. Bernheisel*
Florence Bien*
Dr. John C. Bloom
Rosanne Bonjouklian
Mrs. Charlotte Bose*
Dr. Ella H. & Mr. Robert R. Bowman
Mr. & Mrs. Charles H. Boxman
Betty Thorp Boyd*
John Charles Braden & Denton Raubenolt
Mrs. Elba L. Branigin Jr.*
John F. Brennan*
Mrs. Ferne Brewer*
Lenore B. Brignall*
Donald & Barbara Broadlick
Suzanne Swain Brown*
Philip J. Burck
H. Earl Capehart Jr.*
Alex S. Carroll*
Nancy and Chris Christy*
Walter Chroniak*
Ms. Patricia C. Chunn
Norman I. & Maxine Cohen*
Edgar L. Conn*
John and Ulla Connor
Chris W. & Lesley J. Conrad
Dr. Peter Cooney
Ronald & Patricia Cox
Allen E. & Phyllis S. Crum*
Mr. and Mrs. Thomas E. Dapp
John H. Darlington*
Lou & Kathy Daugherty
Andrea Davis
Edgar* and Joanne Meyer Davis
J. Richard Delbaue*
Vivian F. Delbrook*
Carol Richardson Dennis
Suzanne S. Dettwiler*
Steve* & Mary DeVoe
Rollin & Cheri Dick
Mr. and Mrs. Richard A. & Helen J. Dickinson*
Clarita Donaldson
Lillian J. Duckwall*
Francis W. & Florence Goodrich Dunn*
Mr. & Mrs. Don B. Earnhart*
Mr. Robert A. Edwards*
Thomas and Paula Elam
Mr. & Mrs. Richard Felton
Mr. Murray R. Fischer*
Mr. Francis E. Fitzgerald*
Mr. Richard E. Ford*
Mr. & Mrs. William L. Fortune*
Dr.* and Mrs. W. Brooks Fortune
Marilyn K. Fourman
Dr. & Mrs. Larry C. Franks
Bradley S. & Teresa G. Fuson
David A. & Deloris B. Garrett*
Dr. and Mrs. Richard Garrett
Ms. Patricia Garrity
Cy* & Pris Gerde
James E. and Judith A. Gillespie
Nelle Godio*
David and Julie Goodrich
Mrs. Anne M. Greenleaf*
Mr. Raymond K. Gretencord*
John S. Griffin*
Carol E. Gruen*
Gail H. & Robert H. Hall*
Steve L. Hamilton
Louise W. Hanson*
Mary Pat Hanson
Mary and George Harless
Dr. Frederick B. Hendricks
Dr. & Mrs. F. R. Hensel*
Mike & Noel* Heymann
Tom & Nora Hiatt
Mr. and Mrs. Byron Hollett*
Mr. Dennis T. Hollings*
Emma Stutz Horn*
Clarena Huffington*
Ann Hampton Hunt
Rosemary Hurst*
Mrs. Eveline Infanger*
Mr. David A. Jacobs*
Frances M. Johnson*
Ty A. Johnson
H. Jean Jones-Kyle*
Joan & David F. Kahn*
Swadesh* & Sarla Kalsi

The Lynn Society

- Mr. E. Patrick Kane*
Bob and Rhonda Kaspar
Marc & Dana Katz
Mr. & Mrs. E.W. Kelley*
Mr. Donald M. Kercheval*
Patricia Kilbury
Peg Kimberlin
Ms. Marie E. Kingdon
Louise Lage Kirtland*
John J. Kloss
Kay F. Koch
Peter B. Krieg*
James E. & Patricia J. LaCrosse
Dr. Ned & Martha Lamkin
Barry Landy*
Lawrence & Vivian Lawhead
Mr. and Mrs. Richard L.
 Ledman*
Raymond Leppard*
Ruth Lilly*
Mr. L. Robert Lowe Jr.
Mr. & Mrs. Charles J. Lynn*
Doris L. Lynn*
Dr. and Mrs. Gordon Mallett
Mr. Stuart L. Main*
Dr.* and Mrs. Karl Manders
Mr. & Mrs. Robert L. Mann*
Mr. and Mrs. Michael Ben
 Maurer*
Stacy Maurer
Susanne McAlister and Daniel
 Spitzberg
Marjorie N. McClure*
W. Jean McCormick
H. Richard & Sarah
 Forney McFarland*
Janice & John F. McHenry
Mrs. Judd R. McKay*
Alice & Kirk McKinney*
Robert B.* and Eleanor S.
 McNamara
Martha Means*
Marian Y. & Boris E. Meditch*
Clayton C. Miller
Mr. & Mrs. J. Irwin Miller*
Art & Pat Mirsky*
Robert H. & Ina Mohlman*
William F. Murphy, CPA
John & Carolyn Mutz
Peggy & Byron Myers
Mrs. Walter Myers Jr.*
Mr. Don Nicholson*
- Louis W. Nie, M.D.*
Mr. Donald G. Nutter*
Frieda Nyhart*
Marcia L. O'Brien*
Mr. & Mrs. Charles J.
 O'Drobinak
Mrs. Joanne W. Orr*
Lois Heuse Otten*
Dr. & Mrs. Bruce Peck*
Mr. & Mrs. Paul G. Pitz*
Dr. Henry Plaschkes*
Dorit and Gerald* Paul
Joan S. Paulin*
Marian Pettengill and Family
John Mainella & Michael Pettry
Mrs. Joseph D. Pierce*
Mr. Theodore N. Popoff*
Marcia O'Brien Porter*
Patricia A. Quinn*
Dr. & Mrs.* George Rapp
Josette Rathbun
Miss Sally Reahard*
Mr. Vernley R. Rehnstrom*
Peter C. & Dr. Jeanette P. Reilly*
George T. & Olive Rhodes*
Mr. & Mrs. Elton T. Ridley*
David Rodgers
Mary Ann Roman*
Dr. Mary Avery Root*
Sanford Rosenberg *
Dr. & Mrs. Robert L. Rudesill*
Henry and Vel Ryder*
Frances M. Schager*
Jane & Fred Schlegel*
Paul & Martha Schmidt
Carl* and Laurel Schnepf
H. Tuck* & Saundra L. Schulhof
Mrs. Mary Schulz*
Mrs. Raiford Scott*
Ms. Violet H. Selley*
Margaret A. Shaw
Macy M. Glendining Simmons*
Jean & Clifton* Smith
Mr.* and Mrs. Clark L. Snyder
Jeannette Soudriette*
Mr. Frank C. Springer Jr.*
Mr. Charles B. Staff Jr.*
Sue K. Staton
Andrew Steffen*
Dr.* and Mrs. James B. Steichen
Florence Barrett Stewart*
Ann R. Strong
- Mrs. Samuel Reid Sutphin*
Kathryn* & Sidney Taurel
Carol E. Taylor
Dr. & Mrs. Charles E. Test*
Mrs. David Thiel
William & Karen Thompson
Marianne Williams Tobias*
Kenneth L. Turchi
H. Richard Unkel*
Mrs. Helen E. Van Arendonk*
Ann Vaughan
Mary Jane Wacker*
Virginia M. Wagner*
Margaret Warner*
Dan & Doris Weisman
Penny Weldon*
Anna S.* and James P. White
Harriett Denny White*
Mildred M. Wiese*
David E. and Eleanor T. Wilcox
Lorain C. Will*
Mr. & Mrs. Charles D. Williams,
 III*
Clara M. Wilmeth*
Richard D. & Billie Lou Wood*
Ms. Mary Wratten*
Mr. & Mrs. C. Daniel Yates
Mildred R. Young*
Wilma K. Young*
Steven J. Zellman*
Karl & Barbara Zimmer*
Mike and Phyllis* Zimmerman

*Deceased

Support the Arts in Indy!

Ronen Chamber Ensemble

Join us during our 24–25 concert season, “Connections.” Visit www.ronenchamber.org for more info or scan the QR code.

French-Russian Collections

The artistic and cultural connection between France and Russia is explored in Ronen’s third program of the season, featuring Prokofiev’s first violin sonata.

March 23, 2025, 4 p.m.: Our Lady of Lourdes Church

March 24, 2025, 7:30 p.m.: Indiana Historical Society

Season Finale

The season wraps up with some Ronen firsts and a piece by Ronen’s friend and local composer, Michael Schelle.

May 11, 2025, 4 p.m.: St. Paul’s Episcopal Church

May 12, 2025, 7:30 p.m.: Indiana Historical Society

Artistic Directors: Gregory Martin, Piano; Jayna Park, Violin; Alistair Howlett, Flute; Jennifer Christen, Oboe



Indianapolis Ballet

An Indianapolis holiday tradition continues with Tchaikovsky’s masterpiece *The Nutcracker*. Make special memories this holiday season as you follow Clara on her magical journey to the Land of Sweets. Experience *The Nutcracker*, **December 19–22**, at The Murat Theatre at Old National Centre!

Looking for a performance for the entire family to enjoy, including your young artists? Indianapolis Ballet presents Family Series: *Nutcracker Sweets*, a deliciously bite-sized one hour version of the full-length production of *The Nutcracker*. **Join us for *Nutcracker Sweets* at The Tobias at Newfields, December 27–30, with performances at noon and 3 p.m. each day.**

For information about the 24–25 season and tickets, visit indyballet.org.



Indianapolis Children's Choir

It's holiday time in the city of Indianapolis! Add another timeless tradition to your list this year with the annual Indianapolis Children's Choir holiday concerts. Singers from across the city will share songs that bring you back to wonderful holiday vignettes from years past. All concerts take place at Second Presbyterian Church in Indianapolis. Get tickets at icchoir.org/tickets



- **December 13, 2024, at 7 p.m. — Angels Sing: A Vintage Holiday**
- **December 14, 2024, at 3 p.m. — Celebrate the Season: A Vintage Holiday**
- **December 14, 2024, at 7 p.m. — Angels Sing: A Vintage Holiday (Candlelight Performance)**
- **December 15, 2024, at 4 p.m. — Sounds of the Season: A Vintage Holiday**
- **Christel DeHaan In Harmony: A Beautiful Tomorrow. May 3, 2025, at Pike Performing Arts**
- **Dawning. May 18, 2025, at St. Paul's Episcopal Church**

Indianapolis Suzuki Academy

More Than Music Lessons: The Indianapolis Suzuki Academy offers violin, cello, harp, and piano lessons via the Suzuki Method. Unlike traditional music lessons, this is an activity for the child AND the parent, partnering with our Suzuki teachers to help the child learn music just as naturally as learning their first language. Our mission is to nurture beautiful character in every child through excellence in music. Learn more by attending a Parent Info Session—now enrolling for January 2025.



Indianapolis Symphonic Choir

The Indianapolis Symphonic Choir presents the 34th Annual *Festival of Carols*—Indy's family holiday tradition for kids from one to 92. Featuring baritone Bruno Sandes, special guest Debby Knox, the Indianapolis Chamber Orchestra, Spotlight Choir Lawrence Central High School's Central Sound, plus a visit from Santa himself! We look forward to celebrating the holidays with you at one of our performances! Visit indychoir.org for tickets and more information.



Friday, December 20, Saturday, December 21 & Sunday, December 22*
The Palladium, Carmel

Monday, December 23*
Schrott Center for the Arts, Butler University, Indianapolis

**indicates performances with ASL interpretation.*

Administration and Staff of the ISO

Executive Office

James M. Johnson, *Chief Executive Officer*
Lee Ann Hall, *Executive Assistant to the CEO*

Venue Operations

Marcus Mizelle, *Venue Operations Manager*
Alissa Britigan, *Event Manager*
Kathryn Thomas, *Rentals & Hospitality Manager*
Roberto Tapia, *Day Porter*

Artistic Administration

Edward Parsons, *Vice President of Artistic Operations*
Alyssa Brooks, *Director of Orchestra Operations*
Philomena Duffy, *Associate Vice President of Orchestra Personnel*
Milner Fuller, *Manager of Classical Programming*
Ty A. Johnson, *Senior Director, Pops Programming and Presentations*
Brandy Rodgers, *Senior Manager of Pops, Yuletide Celebration & Symphonic Pops Consortium*
Matthew Creek, *Pops and Presentations Coordinator*
Bennett Crantford, *Assistant Orchestra Personnel Manager*

Development

Stephanie Hays-Mussoni, *Vice President of Development*
Chrissi Laut, *Executive Administrative Assistant*
Rose Branson, *Senior Director of Annual Giving*
Maggie Leemhuis, *Senior Director of Corporate and Foundation Giving*
Kelli Dawson, *Associate Director of Corporate and Foundation Giving*
Kellie Kierce, *Associate Director of Individual Giving*
Liz Marvin, *Associate Director of Individual Giving*
Tim Stephenson, *Director of Major Giving*
Emelyn Godby, *Corporate Stewardship Manager*
Allison Fields, *Donor Stewardship & Development Events Manager*
Kara Sudheimer, *Gift Processor & Development Database Administrator*

Marketing and Communications

Sara Galer, *Vice President of Marketing & Communications*
Emily Winship, *Director of Marketing*
Jen Huber, *Communications Content Manager*
Luke Cooley, *Senior Graphic Designer*
Olivia Burl, *Graphic Designer*
Darcey Laymon, *Senior Group Sales Manager*
Erin Jeffrey, *Marketing & Communications Manager*

Patron Services

Elizabeth Whipkey, *Director of Ticket Services and Database Management*
Janine Knuutila, *Senior Customer Care Representative*
Trevor Conerly, *Customer Care Representative*
Lakin Schoen, *Customer Care Representative*
Ava Worthington, *Customer Care Representative*
Isabelle Kohlberg, *Customer Care Representative*
Kim Lynch, *Customer Care Representative*
Nick Neukom, *Customer Care Representative*

Education and Community Engagement

Nicha Stapanukul, *Director of Education and Community Engagement*
Liana Powell, *Education and Community Engagement Manager*
Krystle Ford, *Director of Metropolitan Youth Orchestra*
Jordan Nelson, *Associate Director, MYO*
Ilana Shinkle, *MYO Administrative Assistant*

Finance

Jennifer Janik, *Vice President of Finance & CFO*
Adam White, *Controller*
Stephanie Antrim, *Staff Accountant*
Nate Rushton, *Staff Accountant*

Human Resources

Larry R. Baysinger, *Vice President of Human Resources*
Melissa Sanders, *Human Resources Generalist & Wellness Advocate*



Hilbert Circle Theatre Information

Welcome to the Hilbert Circle Theatre, home of the Indianapolis Symphony Orchestra. We are delighted you are with us and hope you enjoy the performance.

Box Office

For questions about parking, tickets, subscriber benefits, and will call, visit our Box Office at the main entrance to the theatre (off of Monument Circle) or the satellite Box Office at the east entrance (off Scioto Street, open before performances only).

Subscriber Information

If you are a subscriber and have any ticketing needs, please email the ISO at subscriber@IndianapolisSymphony.org. One of our Customer Care Representatives will return your email as soon as possible.

Coat Checks and Restrooms

Coat checks are located on the main floor and on the Oval Promenade on the second floor. The second floor can be reached by staircases on the east and west end of the theater or elevators near the main entrance. Accessible restrooms are located on both floors. Changing tables are available in most restrooms in the accessible stall. A family/gender-neutral restroom is also available; please ask an usher for access.

Ushers

For questions about Hilbert Circle Theatre accessibility, first aid, and lost and found, please see an usher. Hearing enhancement devices are available in the coat room, and larger print programs can be made available upon request ahead of the event. Ushers are here to answer your questions and to make your concert experience enjoyable.

Emergency

In the event of an emergency, please use the nearest exit (marked by lighted signs). This is your shortest route out of the theater.

Beyond the Concert

Attend The J. K. Family Foundation *Words on Music* one hour before every IU Health Plans *Classical Series* concert to hear from classical music experts.

Parking

Express Park Garage is open on the west side of Pennsylvania Street between Market and Washington Streets. The garage is owned and operated by Denison Parking. A canopy connects the garage to the Hilbert Circle Theatre lobby, giving you a close and convenient parking option.

Other parking options include:

- Valet Service is offered for the IU Health Plans *Classical Series*, Printing Partners *Pops Series*, the *Film Series* presented by Bank of America, and select AES Indiana *Yuletide Celebration* performances. Available one hour before the performance begins.
- Circle Centre Mall Parking Garages (recommended for Coffee Concert patrons because of limited parking).
- Metered parking is available downtown near the theatre. Visit parkindy.net for details.
- Visit downtownindy.org for additional parking options.

For more information, contact the Indianapolis Symphony Orchestra at 32 East Washington Street, Suite 600, Indianapolis, IN 46204, visit us online at IndianapolisSymphony.org or call the Hilbert Circle Theatre Box Office at 317-639-4300.

We welcome your comments at iso@IndianapolisSymphony.org!

2024–25 Season Sponsors

The Indianapolis Symphony Orchestra is grateful for the generous support of these season-long corporate and foundation sponsors.

To become a corporate partner, please contact Maggie Leemhuis, Senior Director of Corporate & Foundation Giving, at 317-229-7094 or email sponsorships@indianapolissymphony.org

Title Sponsors



Health Plans



Premier Sponsors



Additional Support Provided By



Show your *support* for the ISO!



Gifts of **\$100 or more** can receive donor benefits such as discounts on tickets, presale ticket access, invitations to an open rehearsal, and more!



Ways to give:

- Cash, check, or credit card
- Gifts of appreciated stock
- Donor-advised funds
- Bequests
- Life insurance
- Retirement plan
- IRA-RMD
- Charitable gift annuity
- Charitable trusts
- And more!

Consider making a *gift* today!

As Indiana's largest nonprofit performing arts organization, the Indianapolis Symphony Orchestra is grateful for its supporters who help sustain world-class musical experiences for the community.

Contact Senior Director of
Annual Giving Rose Branson at
rbranson@indianapolissymphony.org
or **317-742-9579** for more information.





Oxford proudly supports the
Indianapolis Symphony Orchestra.

Oxford is an independent, fee-only firm privately held by its partners.
We are committed to providing multigenerational estate planning advice
and forward-thinking investment solutions to families and institutions.



OXFORD

FINANCIAL GROUP, LTD™

ATLANTA ♦ CHICAGO ♦ CINCINNATI ♦ GRAND RAPIDS

INDIANAPOLIS ♦ MINNEAPOLIS ♦ PALM BEACH

317.843.5678 ♦ WWW.OFGLTD.COM/SYMPHONY

Oxford is an investment advisor registered with the U.S. Securities and Exchange Commission. Registration does not imply a certain level of skill or training. More information about Oxford's investment advisory services and fees can be found in its Form ADV Part 2, which is available upon request. OFG-2410-22